

# F3 系列齿轮泵简介

Introduction to F3 Series Gear Pumps

## 特点

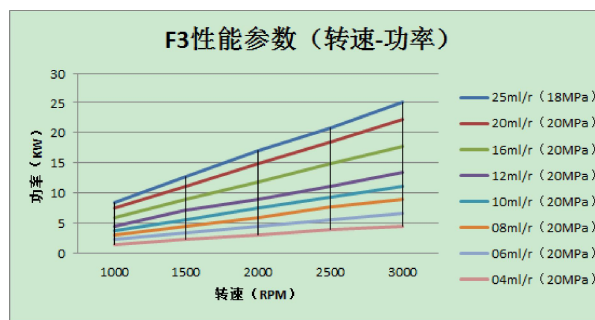
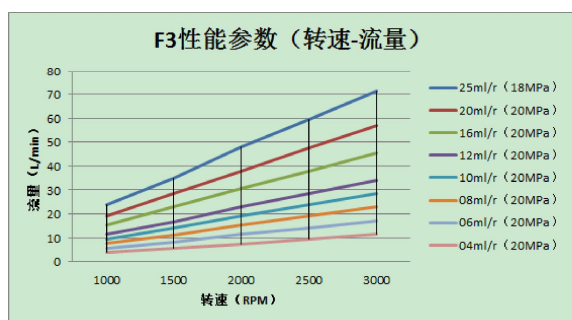
- 本系列高压齿轮泵最高压力可达27.5MPa
- 排量从4至25ml/r
- 高强度合金钢齿轮和连接轴
- 安装形式、油口、轴伸有多种设计可供选择
- 结构简单、重量轻、使用稳定可靠和寿命长特点
- 可以组装成单联泵、双联泵、三联泵结构
- 使用特殊结构的浮动轴套和高稳定性滑动轴承使泵在高压下工作时仍然具有高的容积效率
- 100%出厂试验检测



## FEATURES

- High pressure gear pump with maximum pressure up to 3987.5 PSI
- Cubic inch displacement from 0.244 through 1.525
- High strength alloy steel gear and shaft sets
- A wide range of porting ,mounting and shaft options available
- Simple structure ,small size, durable and longer life
- Can be assembled into a single pump, double and triple pump structure
- Special structured floating bush and high quality self-lubricating bearing provide durable service & high pump efficiency under high pressure
- 100% factory tested

## 性能曲线 PERFORMANCE CURVE



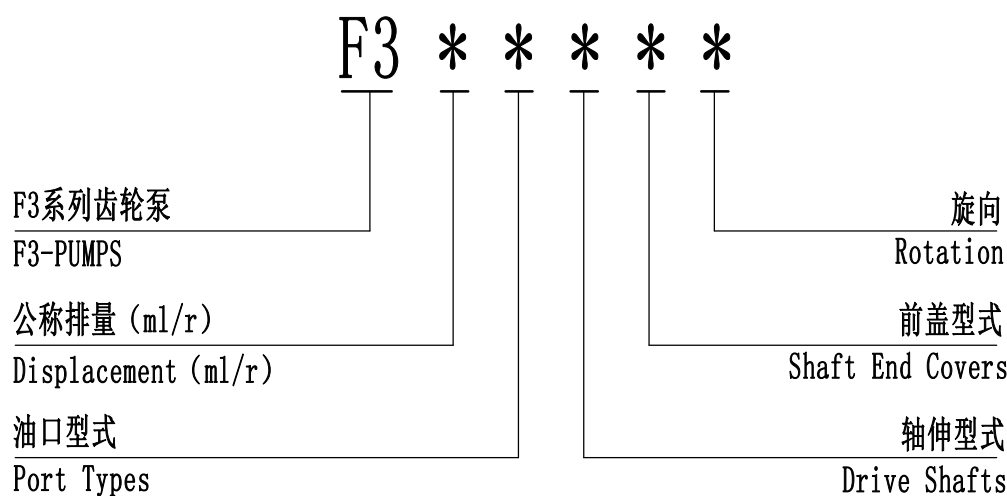
性能曲线是基于一系列试验结果汇总得出的，其数值不代表单独一台产品的性能。  
Performance data given is based on a series of test and is representative of any one unit.

## 使用领域 APPLICATION FIELD

该产品设计构造适用于：工业机动车辆、专用改装车辆、环卫车辆、农业机械、矿山机械、钻探机械等领域

Applicable to: industrial motor vehicles, special modified vehicles, sanitation vehicles, agricultural machinery, mining machinery, drilling machinery and other fields

## 标准型号说明 STANDARD MODEL IDENTIFICATION

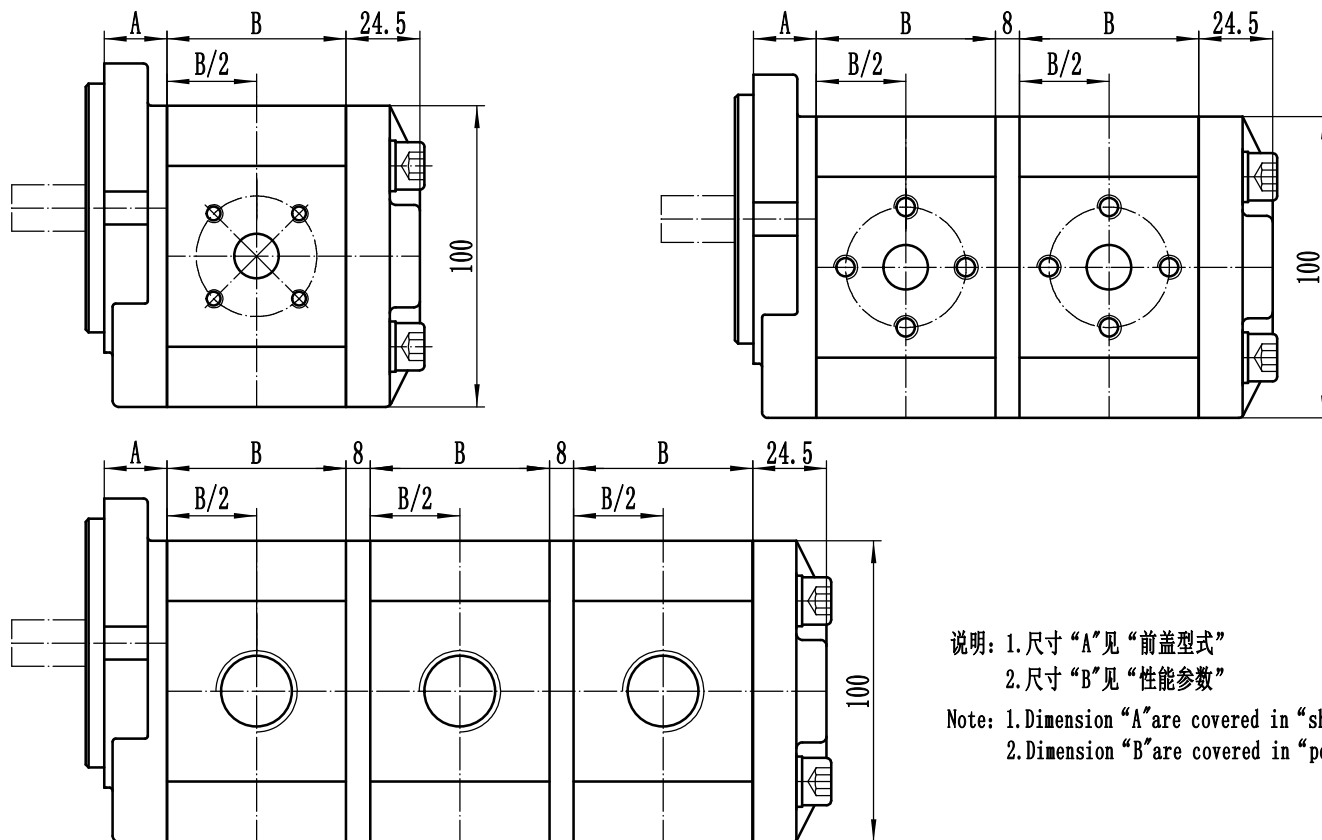


非标准产品型号请咨询派士乐研发中心  
For non-standard product options ,consult PARSLE R&D Dept.

## 性能参数 PERFORMANCE

型号 Model	公称排量 Nominal displacement (ml/r)	额定压力 Rated Pressure (MPa)	最高压力 Max. Pressure (MPa)	最高转速 Max. Speed (r/min)	最低转速 Min. Speed (r/min)	B(mm)
F304	04	23.5	27.5	3500	600	51
F306	06					54
F308	08					56.5
F310	10			3200		59.5
F312	12					63.5
F314	14	20	23.5	2500		65.7
F316	16					68.5
F320	20					74.5
F322	22					77.7
F325	25					18

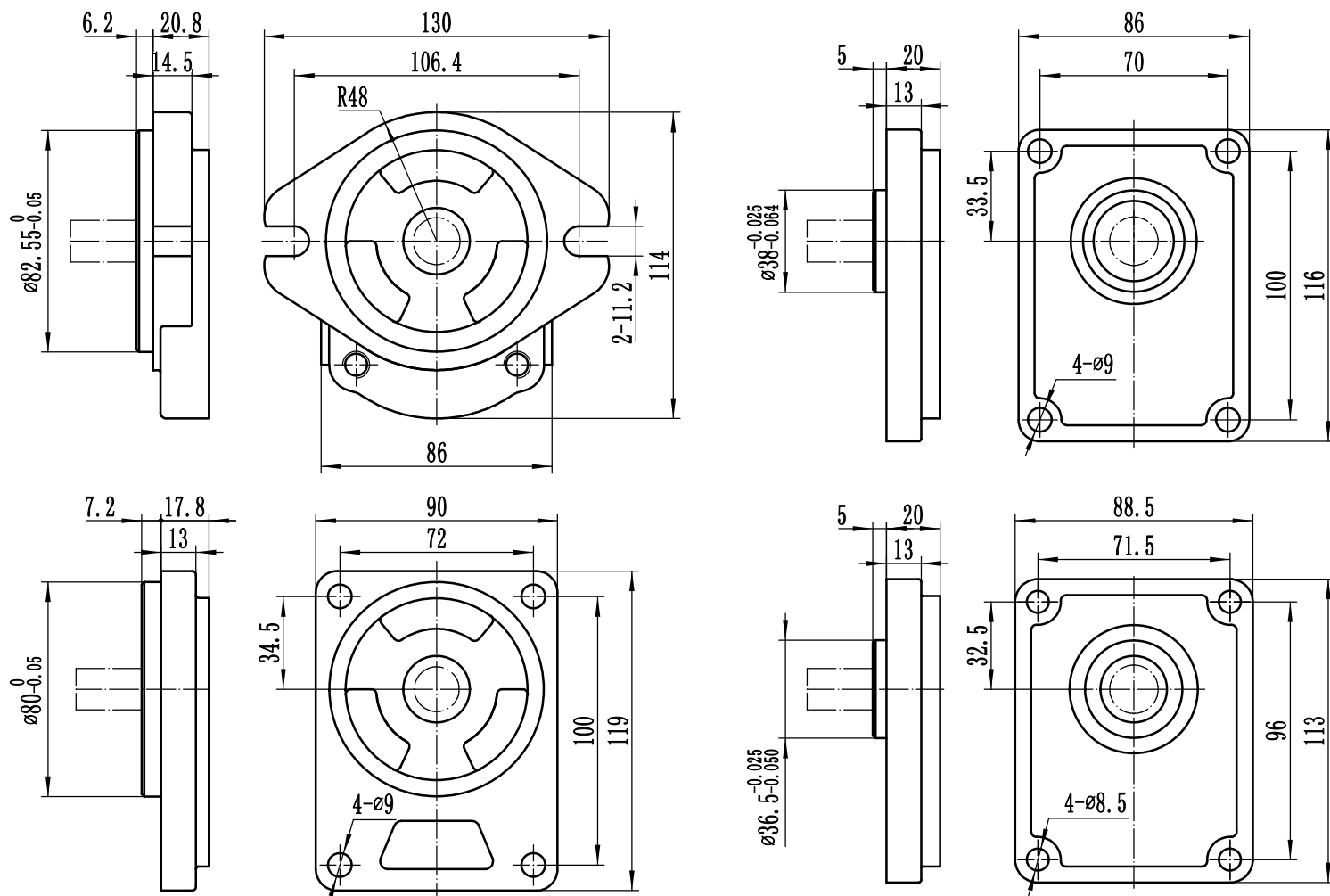
外形尺寸 Outline Dimensions



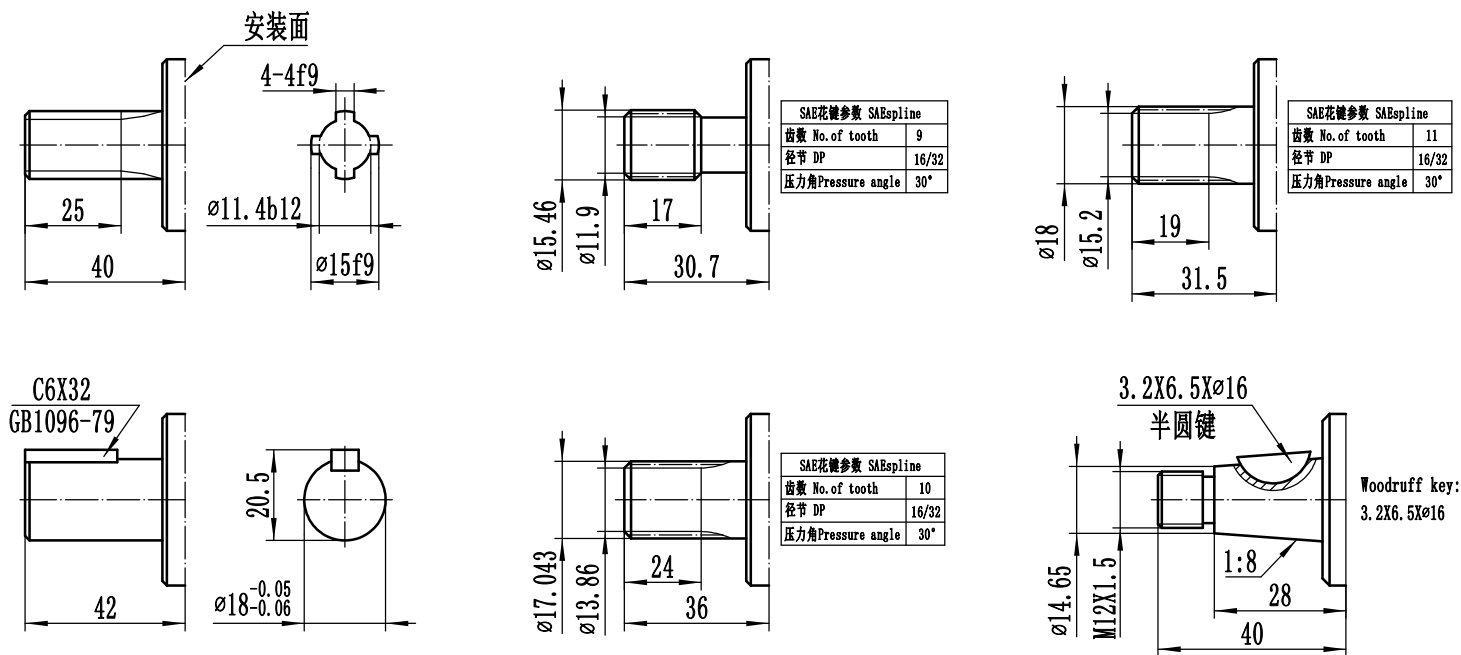
说明: 1. 尺寸“A”见“前盖型式”  
2. 尺寸“B”见“性能参数”

Note: 1. Dimension “A” are covered in “shaft end covers”  
2. Dimension “B” are covered in “performance”

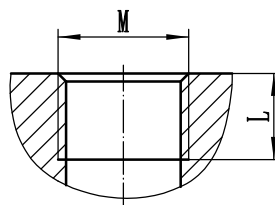
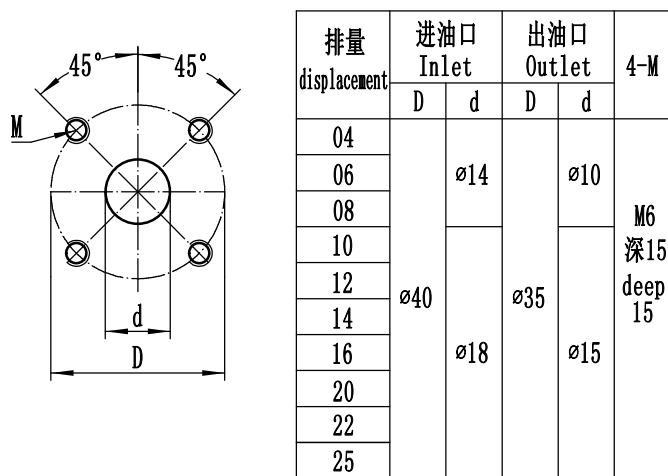
前盖型式 SHAFT END COVERS



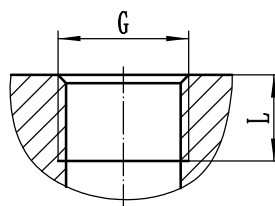
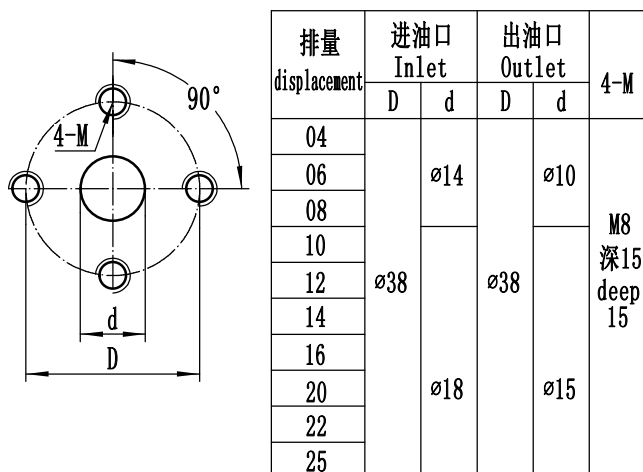
轴伸型式 DRIVE SHAFTS



油口型式 PORT TYPES



公制螺纹油口 Metric Straight thread	
M	L
M18X1.5	14
M20X1.5	14
M22X1.5	16
M27X2	19
M33X2	19



管螺纹油口 BSP PORT	
G	L
G1/4	12
G3/8	12
G1/2	14
G3/4	16
G1	18