

G5 系列齿轮泵简介

Introduction to G5 Series Gear Pumps



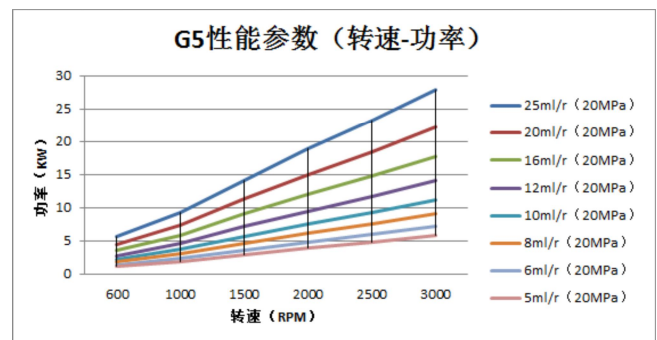
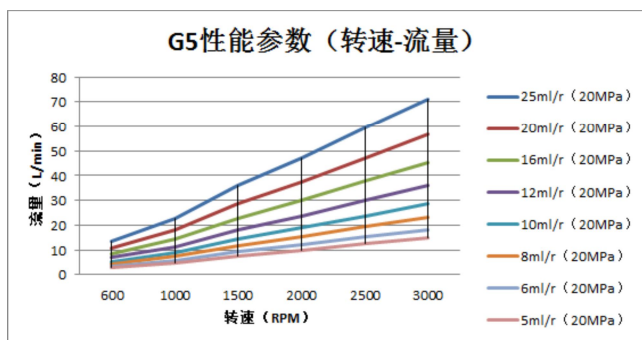
特点

- 本系列高压齿轮泵采用铝合金结构，具有体积小，重量轻，压力高等特点
- 排量从5至25ml/r
- 安装形式、油口、轴伸有多种设计可供选择
- 可以组装成单联泵、双联泵、三联泵及四联泵结构
- 整个工作过程中，压力平衡耐磨侧板可使泵始终保持高效率输出
- 100%出厂试验检测

FEATURES

- This series of high-pressure gear pump adopts aluminum alloy structure, with small volume, light weight, high pressure and other characteristics
- Cubic inch displacement from 0.305 through 1.525
- A wide range of porting, mounting and shaft options available
- Can Be assembled into a single-pump, double-pump, triple pump and four-pump structure
- Pressure balanced wear plates maintain high pump efficiency throughout all operating ranges
- 100% factory tested

性能曲线 PERFORMANCE CURVE



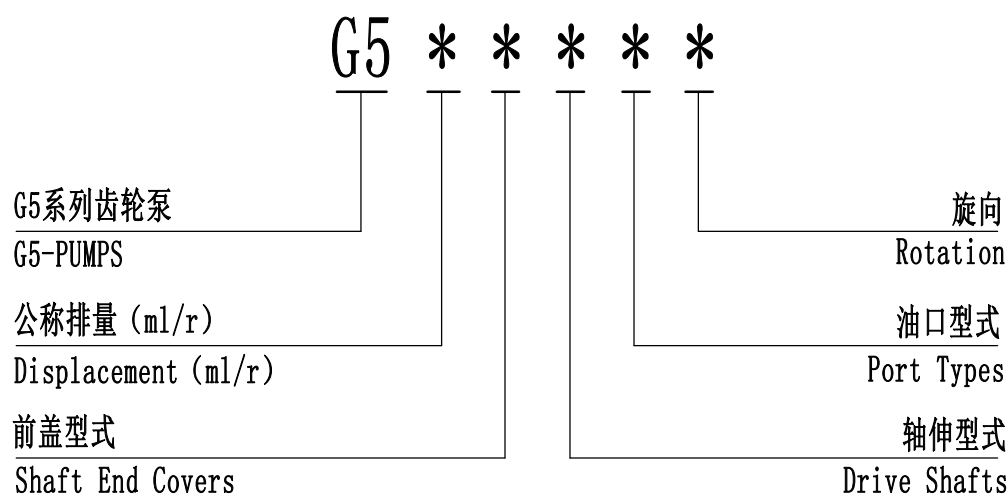
性能曲线是基于一系列试验结果汇总得出的，其数值不代表单独一台产品的性能。
Performance data given is based on a series of test and is representative of any one unit.

使用领域 APPLICATION FIELD

该产品设计构造适用于：工业机动车辆、专用汽车、环卫车辆、工程起重机械、铲土运输机械、桩工机械、矿山机械、钻探机械、压实机械等领域

Applicable to: Industrial Motor vehicles, special vehicles, sanitation vehicles, engineering lifting machinery, shovel soil transport machinery, pile machinery, mining machinery, drilling machinery, compaction machinery and other fields

标准型号说明 STANDARD MODEL IDENTIFICATION

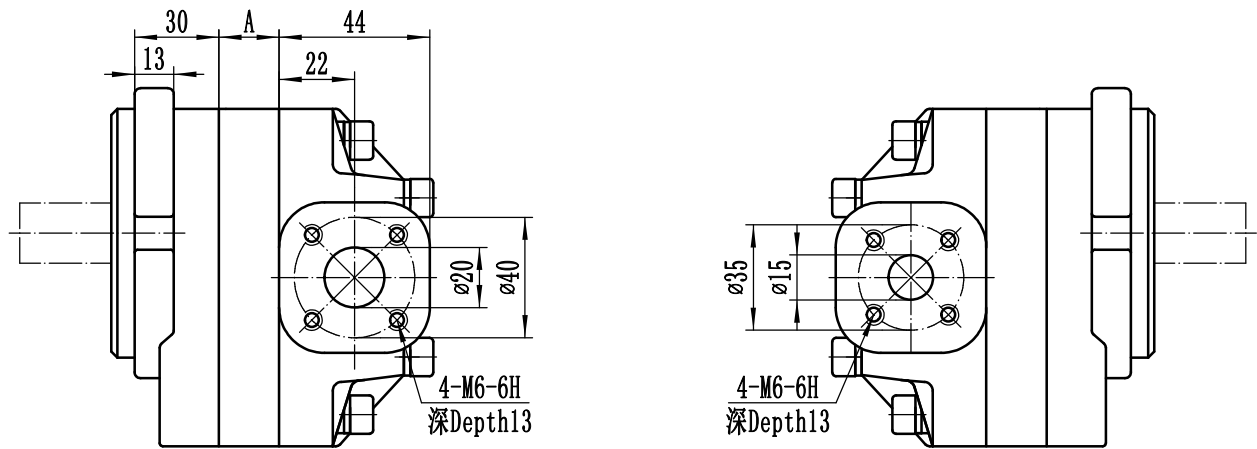


非标准产品型号请咨询派士乐研发中心
For non-standard product options ,consult PARSLE R&D Dept.

性能参数 PERFORMANCE

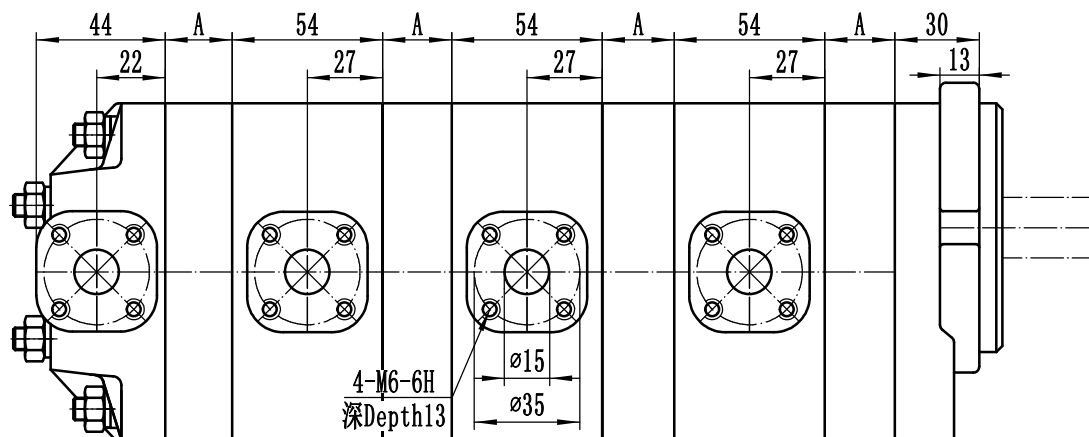
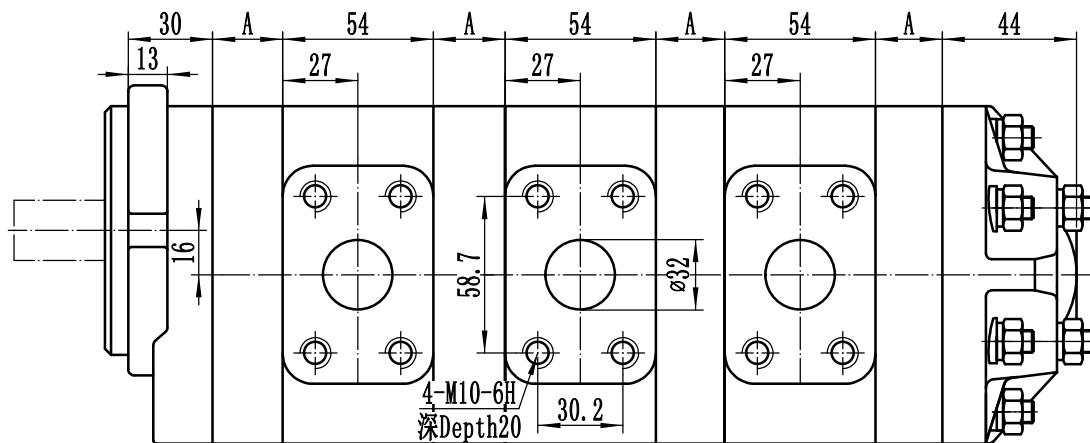
型号 Model	公称排量 Nominal displacement (ml/r)	额定压力 Rated Pressure (MPa)	最高压力 Max. Pressure (MPa)	最高转速 Max. Speed (r/min)	最低转速 Min. Speed (r/min)	A(mm)
G5-05	5.2	21	26	3500	800	8.0
G5-06	6.4				700	10.0
G5-08	8.1				600	12.5
G5-10	10.0					15.5
G5-12	12.6					19.5
G5-16	15.9	20	25	500	24.5	
G5-20	19.9				30.5	
G5-25	25.0				38.5	
		16	21			

外形尺寸 Outline Dimensions

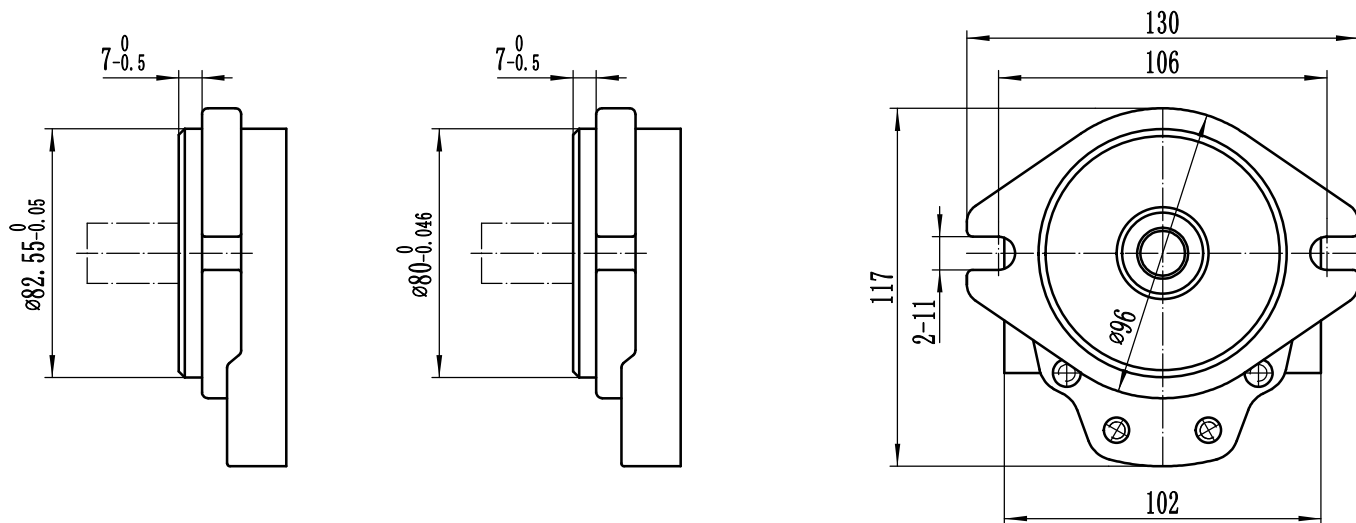


说明：尺寸“A”见“性能参数”

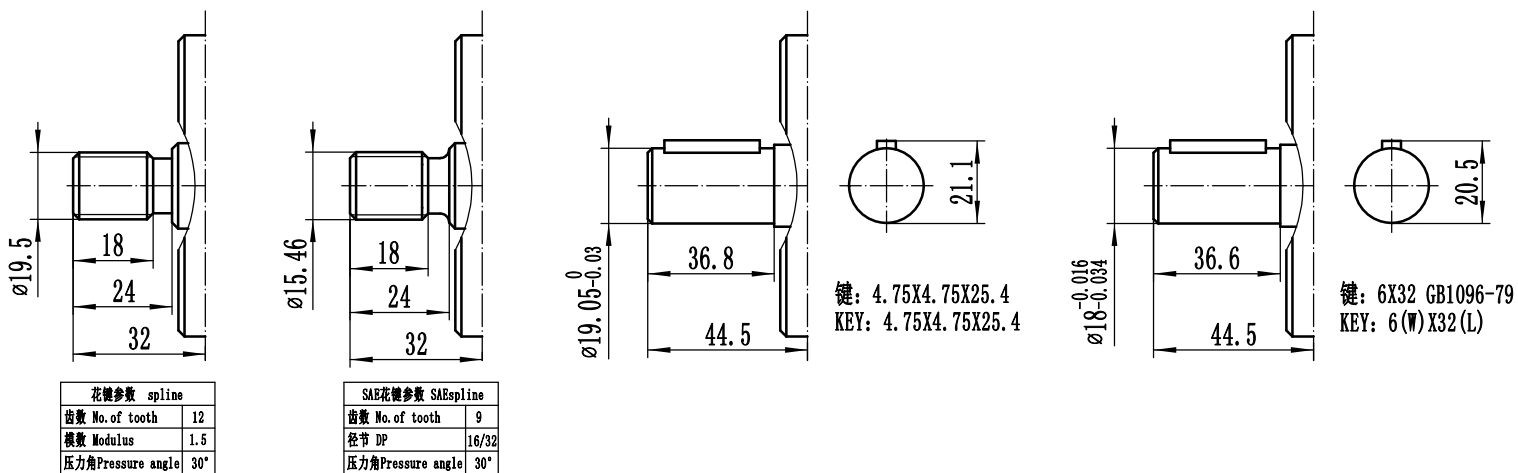
Note: Dimension "A" are covered in "performance"



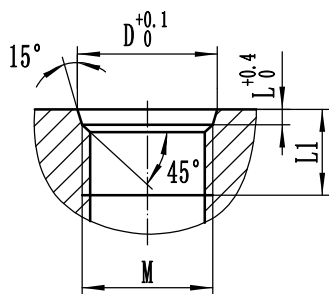
前盖型式 SHAFT END COVERS



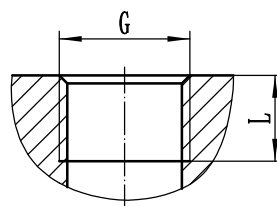
轴伸型式 DRIVE SHAFTS



油口型式 PORT TYPES



公制螺纹油口 Metric Straight thread			
M	D	L	L1
M22X1.5	23.8	2.4	16
M27X2	29.4	3.1	20



管螺纹油口 BSPP PORT	
G	L
G1/2	17
G3/4	19

说明: 公制法兰油口见“外形尺寸”

Note: Metric split flange port in “outline Dimensions”