

# GPC4 系列齿轮泵简介

Introduction to GPC4 Series Gear Pumps



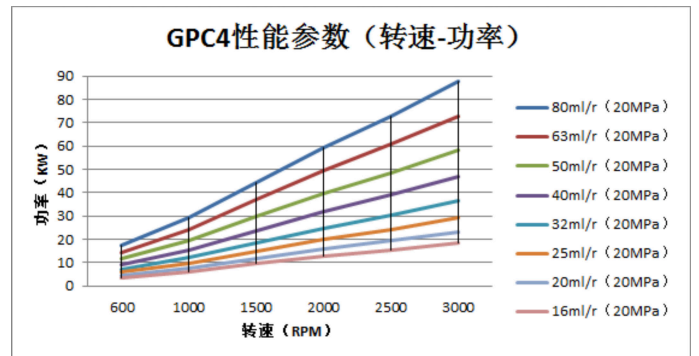
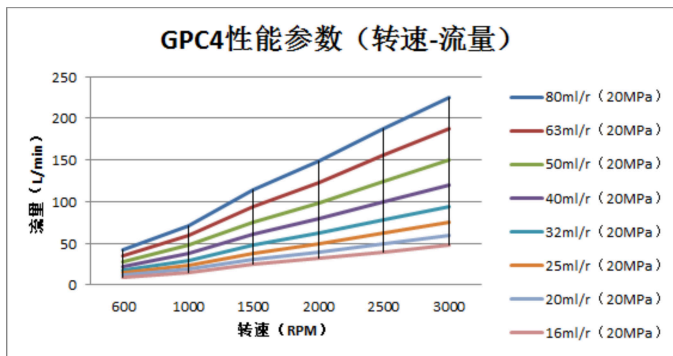
## 特点

- 本系列高压齿轮泵采用铝合金结构，具有体积小，重量轻，压力高等特点
- 排量从16至80ml/r
- 安装形式、油口、轴伸有多种设计可供选择
- 可以组装成单联泵、双联泵、三联泵及四联泵结构
- 整个工作过程中，压力平衡耐磨侧板可使泵始终保持高效率输出
- 100% 出厂试验检测

## FEATURES

- This series of high-pressure gear pump adopts aluminum alloy structure, with small volume, light weight, high pressure and other characteristics
- Cubic inch displacement from 0.976 through 4.88
- A wide range of porting ,mounting and shaft options available
- Can Be assembled into a single-pump, double-pump, triple pump and four-pump structure
- Pressure balanced wear plates maintain high pump efficiency throughout all operating ranges
- 100% factory tested

## 性能曲线 PERFORMANCE CURVE



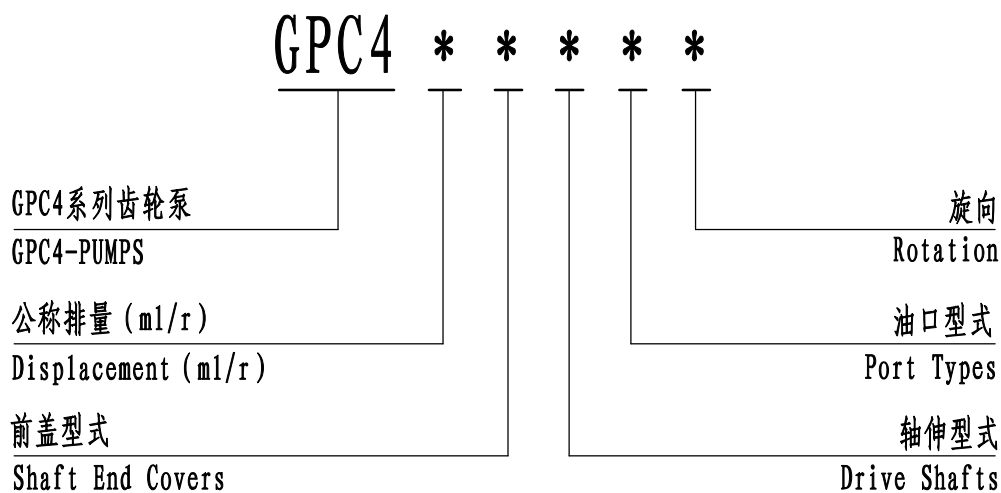
性能曲线是基于一系列试验结果汇总得出的，其数值不代表单独一台产品的性能。  
Performance data given is based on a series of test and is representative of any one unit.

### 使用领域 APPLICATION FIELD

该产品设计构造适用于：工业机动车辆、专用汽车、环卫车辆、工程起重机械、铲土运输机械、桩工机械、矿山机械、钻探机械、压实机械等领域

Applicable to: Industrial Motor vehicles, special vehicles, sanitation vehicles, engineering lifting machinery, shovel soil transport machinery, pile machinery, mining machinery, drilling machinery, compaction machinery and other fields

### 标准型号说明 STANDARD MODEL IDENTIFICATION

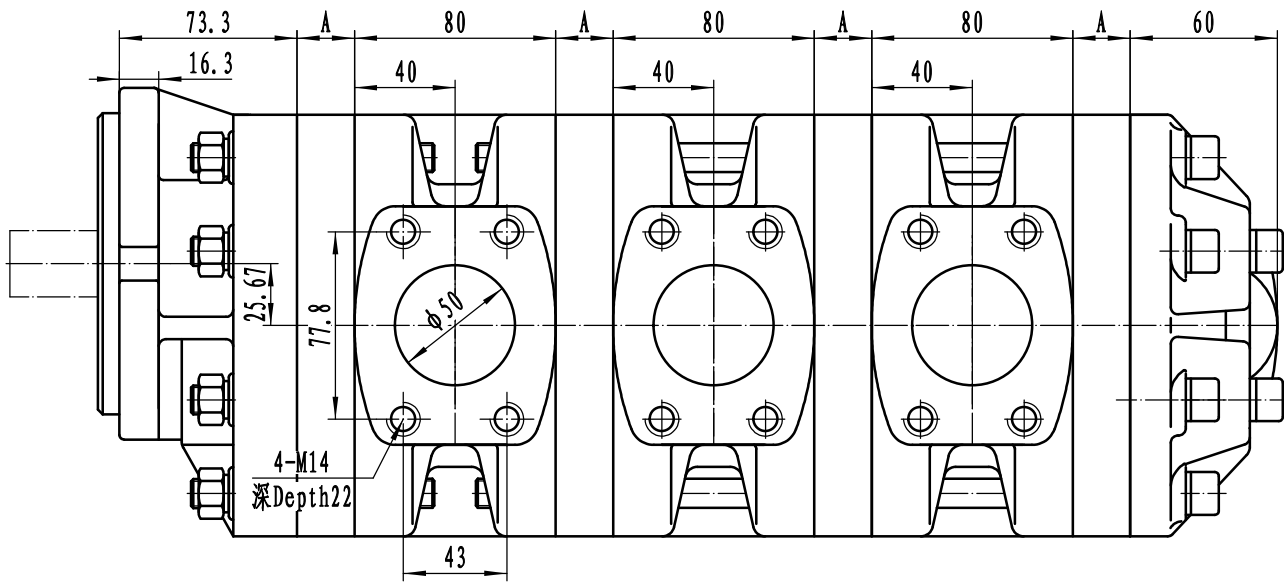
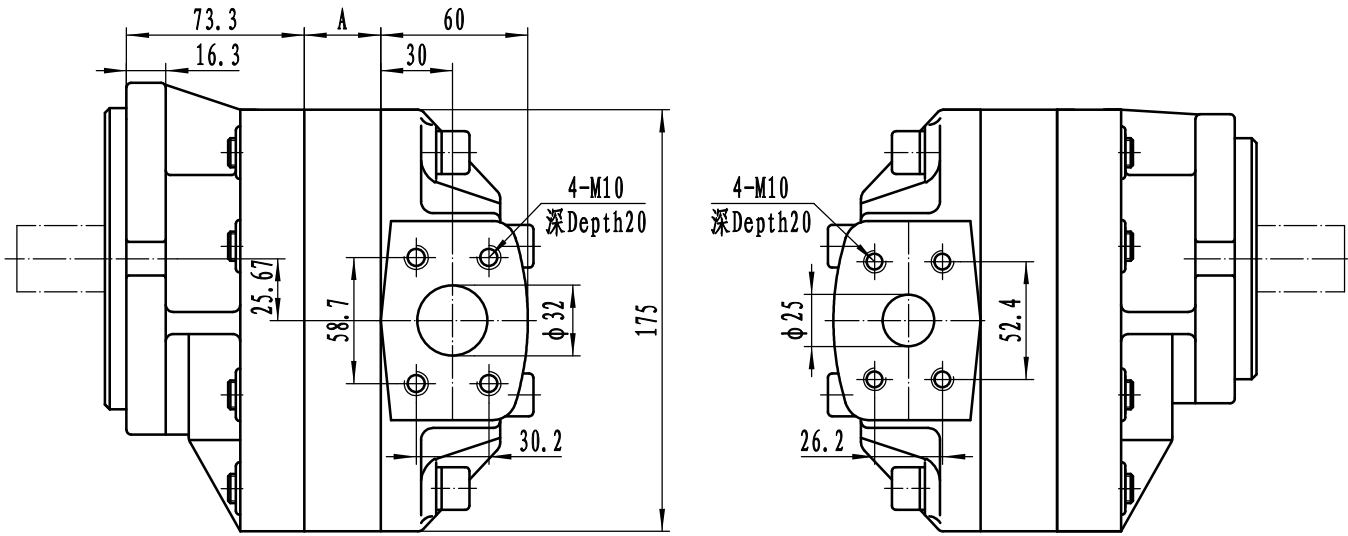


非标准产品型号请咨询派士乐研发中心  
For non-standard product options ,consult PARSLE R&D Dept.

### 性能参数 PERFORMANCE

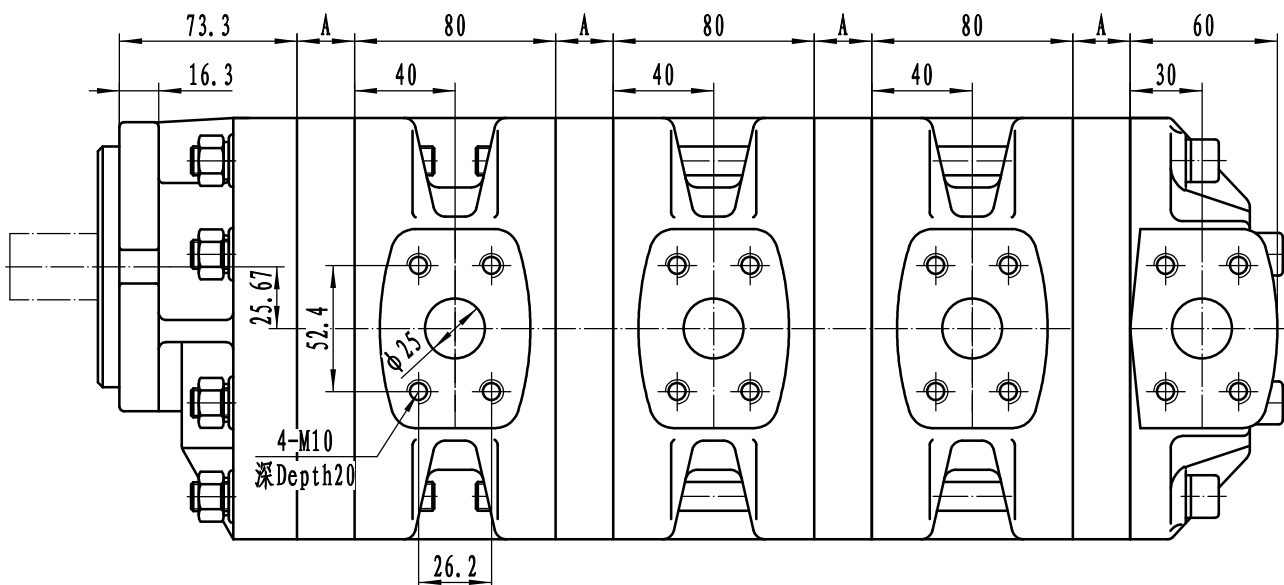
型号 Model	公称排量 Nominal displacement (m1/r)	额定压力 Rated Pressure (MPa)	最高压力 Max. Pressure (MPa)	最高转速 Max. Speed (r/min)	最低转速 Min. Speed (r/min)	A (mm)
GPC4-16	16.8	25	28	3000	900	14.0
GPC4-20	21.0					16.0
GPC4-25	26.2					20.0
GPC4-32	32.8					25.0
GPC4-40	42.0					32.0
GPC4-50	52.5	20	25	2500	600	40.0
GPC4-63	65.6					50.0
GPC4-80	78.7					60.0

外形尺寸 Outline Dimensions

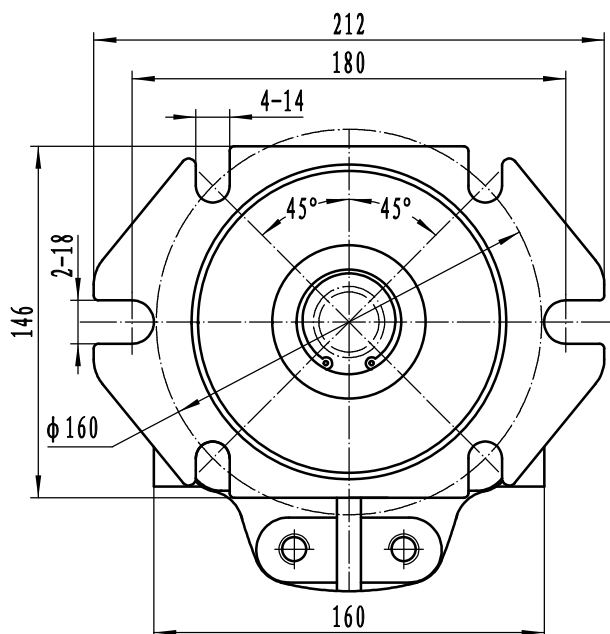
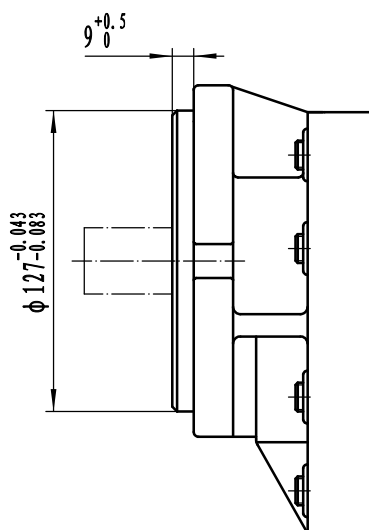
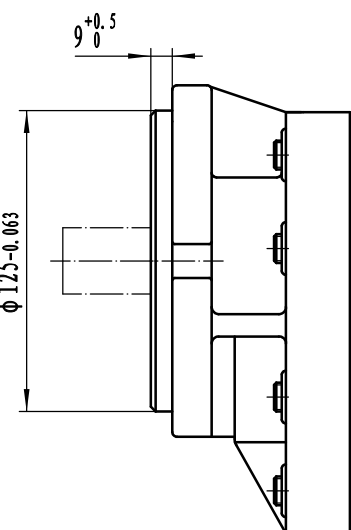
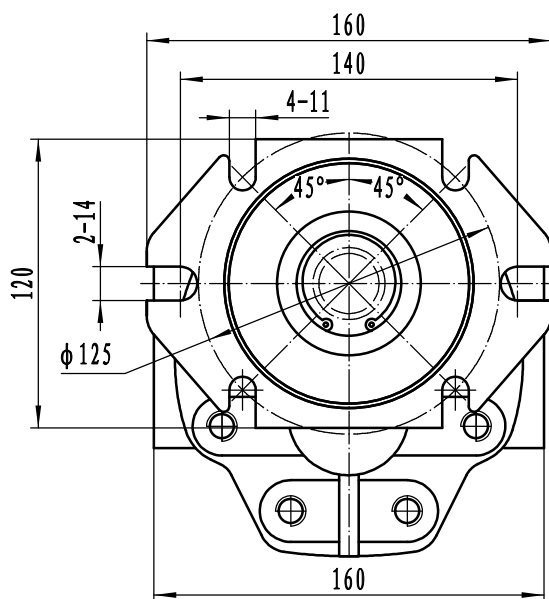
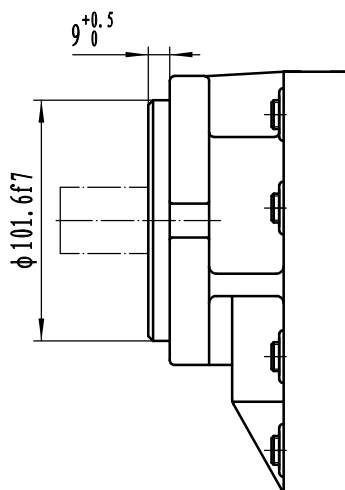
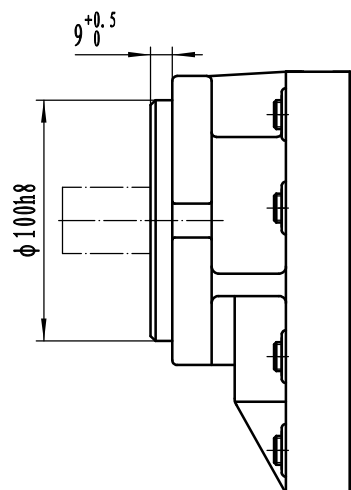


说明：尺寸“A”见“性能参数”

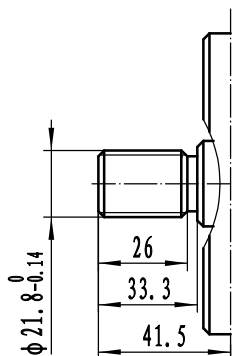
Note: Dimension "A" are covered in "performance"



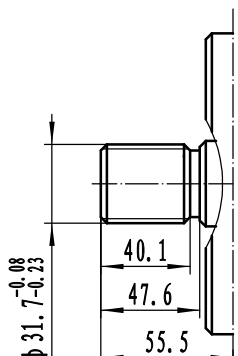
前盖型式 SHAFT END COVERS



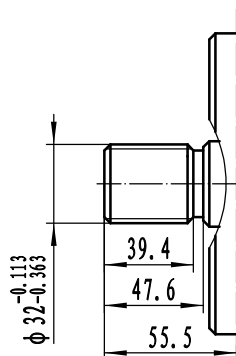
轴伸型式 DRIVE SHAFTS



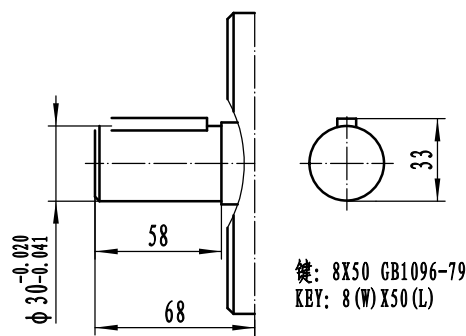
SAB花键参数 SABspline	
齿数 No. of tooth	13
径节 DP	16/32
压力角 Pressure angle	30°



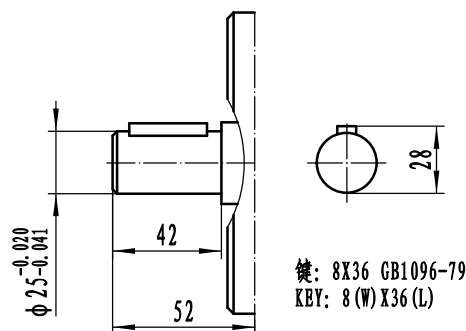
SAB花键参数 SABspline	
齿数 No. of tooth	14
径节 DP	16/32
压力角 Pressure angle	30°



SAB花键参数 SABspline	
齿数 No. of tooth	15
模数 Modulus	2
压力角 Pressure angle	30°



键: 8X50 GB1096-79  
KEY: 8 (W) X50 (L)



键: 8X36 GB1096-79  
KEY: 8 (W) X36 (L)