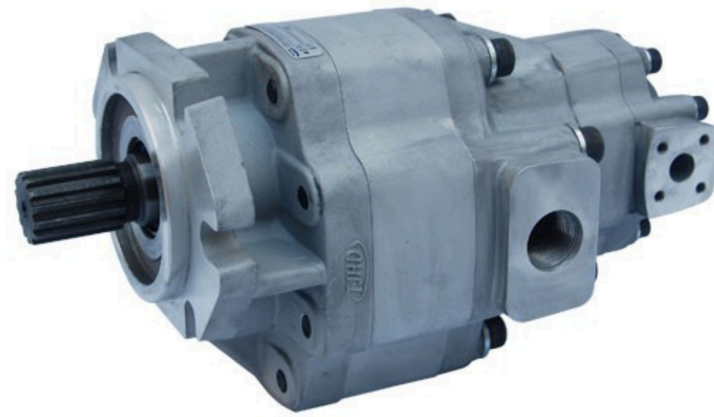


GPC4-G5 系列齿轮泵简介

Introduction to GPC4-G5 Series Gear Pumps



特点

- 本系列高压齿轮泵采用铝合金结构，具有体积小，重量轻，压力高等特点
- 排量从05至80ml/r,是GPC4和G5的组合系列
- 安装形式、油口、轴伸有多种设计可供选择
- 可以组装成单联泵、双联泵、三联泵及四联泵结构
- 整个工作过程中，压力平衡耐磨侧板可使泵始终保持高效率输出
- 100% 出厂试验检测

FEATURES

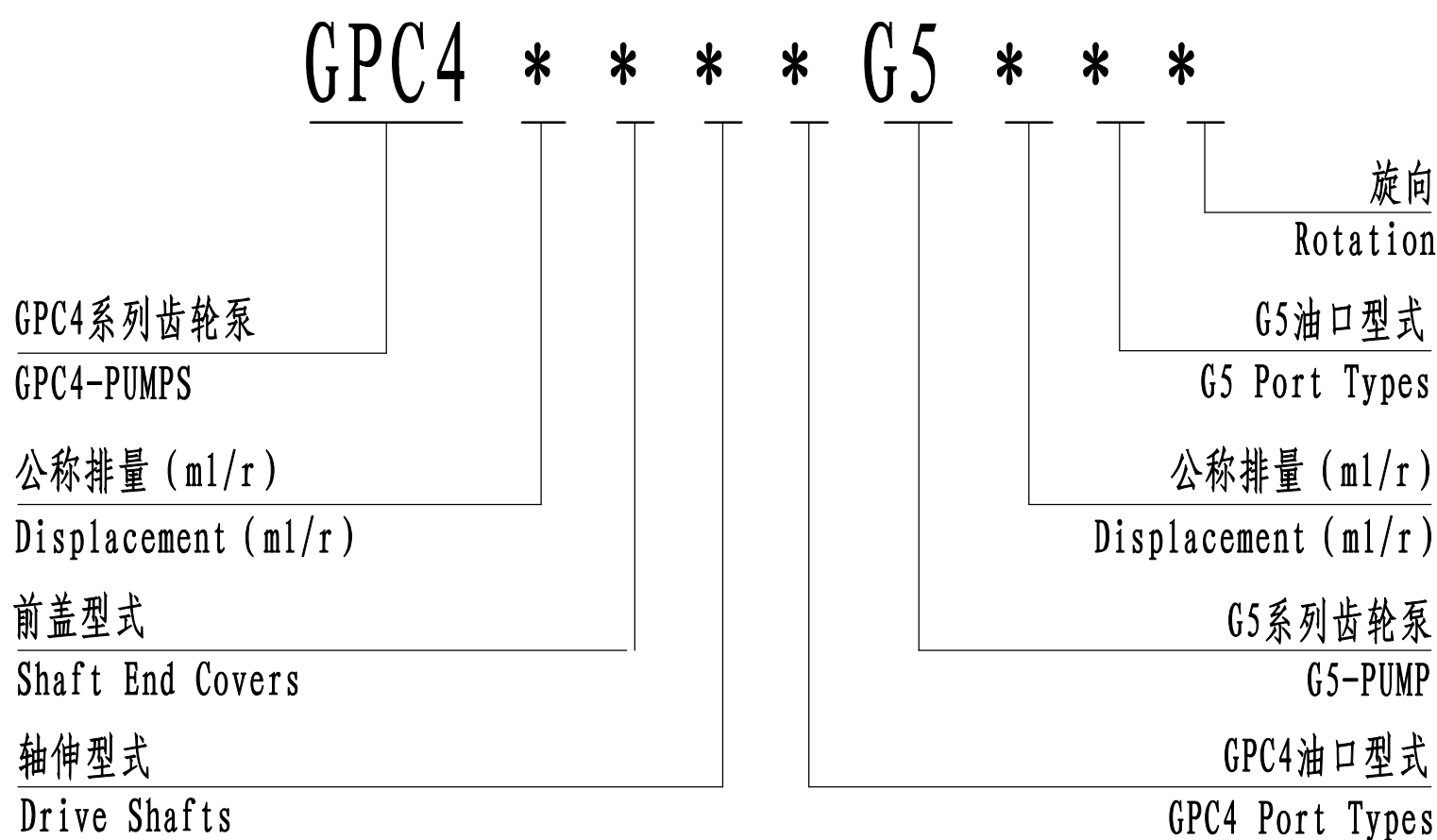
- This series of high-pressure gear pump adopts aluminum alloy structure, with small volume, light weight, high pressure and other characteristics
- Cubic inch displacement from 0.305 through 4.88, a combination of GPC4 and G5
- A wide range of porting ,mounting and shaft options available
- Can Be assembled into a single-pump, double-pump, triple pump and four-pump structure
- Pressure balanced wear plates maintain high pump efficiency throughout all operating ranges
- 100% factory tested

使用领域 APPLICATION FIELD

该产品设计构造适用于：工业机动车辆、专用汽车、环卫车辆、工程起重机械、铲土运输机械、桩工机械、矿山机械、钻探机械、压实机械等领域

Applicable to: Industrial Motor vehicles, special vehicles, sanitation vehicles, engineering lifting machinery, shovel soil transport machinery, pile machinery, mining machinery, drilling machinery, compaction machinery and other fields

标准型号说明 STANDARD MODEL IDENTIFICATION

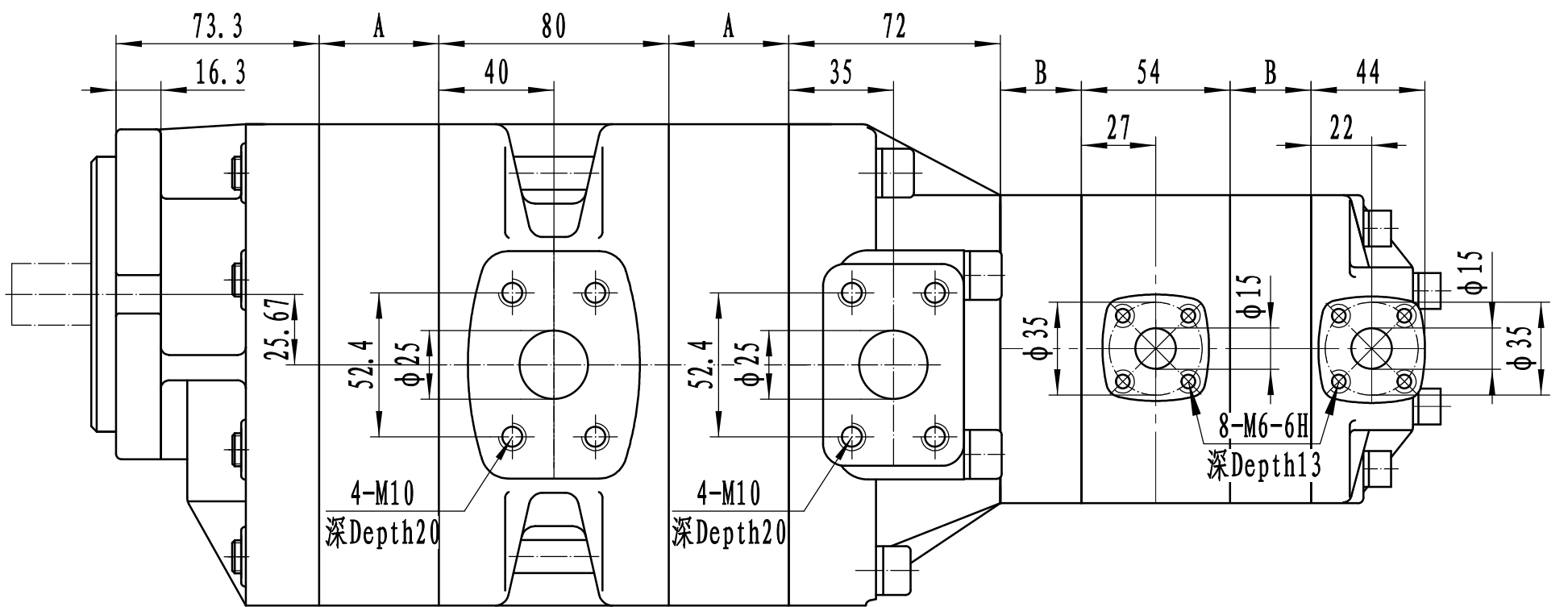
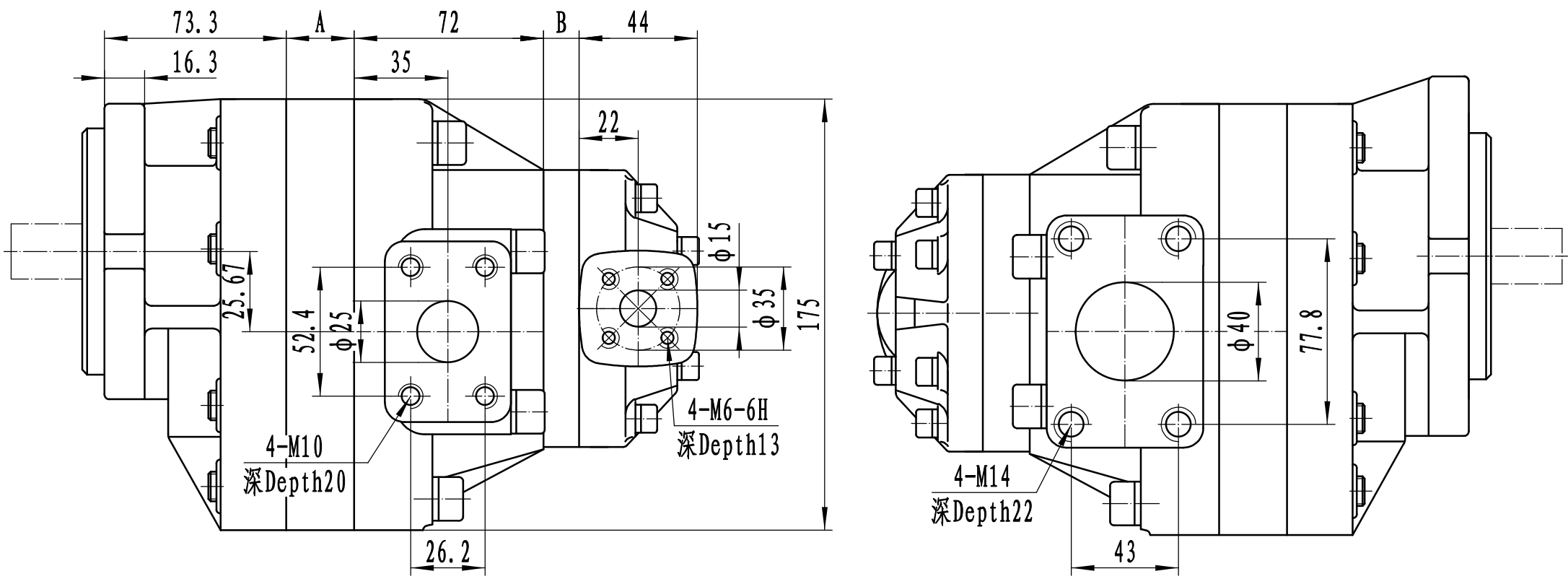


非标准产品型号请咨询派士乐研发中心
For non-standard product options ,consult PARSLE R&D Dept.

性能参数 PERFORMANCE

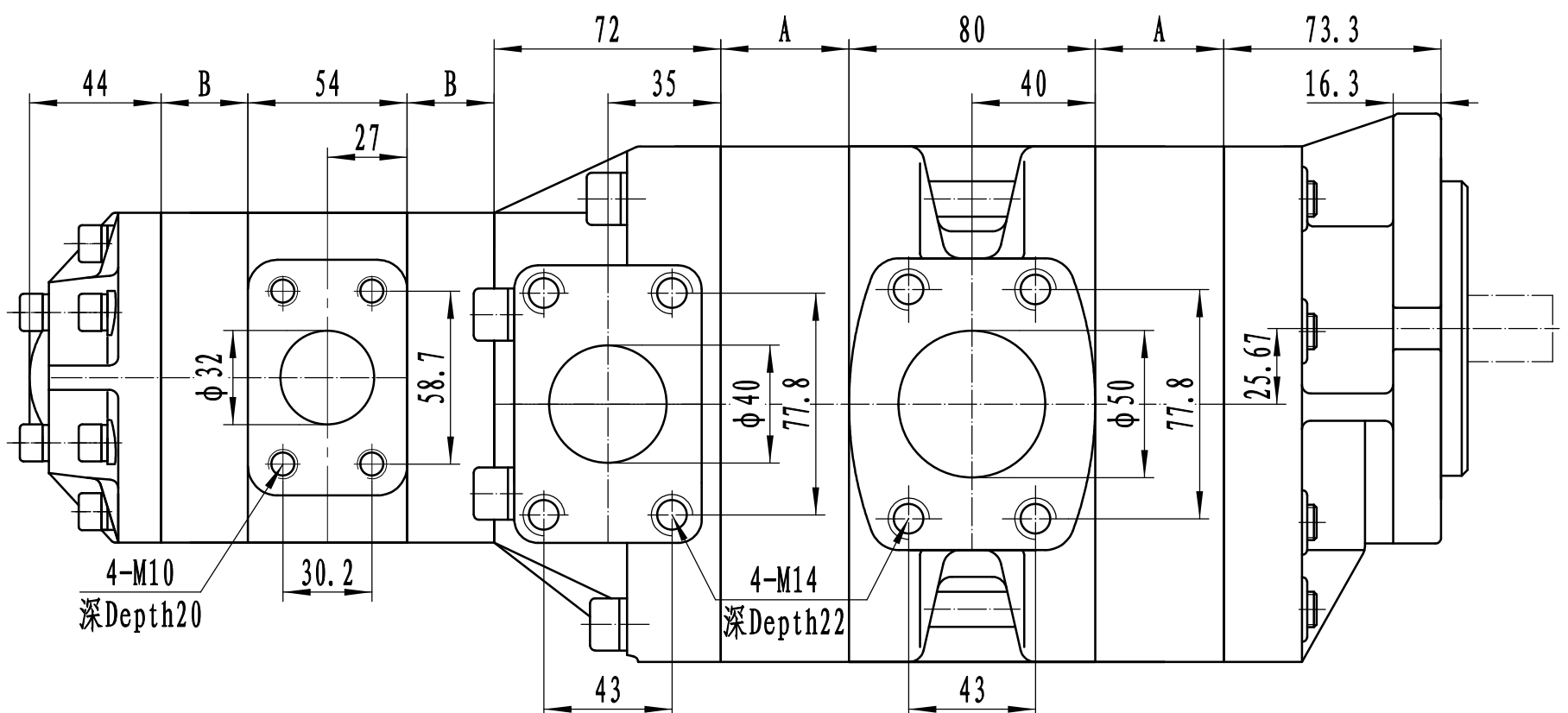
型号 Model	公称排量 Nominal displacement (ml/r)	额定压力 Rated Pressure (MPa)	最高压力 Max. Pressure (MPa)	最高转速 Max. Speed (r/min)	最低转速 Min. Speed (r/min)	A (mm)	型号 Model	公称排量 Nominal displacement (ml/r)	额定压力 Rated Pressure (MPa)	最高压力 Max. Pressure (MPa)	最高转速 Max. Speed (r/min)	最低转速 Min. Speed (r/min)	B (mm)
GPC416	16.8	25	28	3000	900	14.0	G505	5.2	21	26	3000	800	8.0
GPC420	21.0					16.0	G506	6.4				700	10.0
GPC425	26.2					20.0	G508	8.1				600	12.5
GPC432	32.8					25.0	G510	10.0					15.5
GPC440	42.0					32.0	G512	12.6					19.5
GPC450	52.5	20	25	2500	600	40.0	G516	15.9	20	25	500	24.5	
GPC463	65.6					50.0	G520	19.9				30.5	
GPC480	78.7	18	23			60.0	G525	25.0	16	21		38.5	

外形尺寸 Outline Dimensions

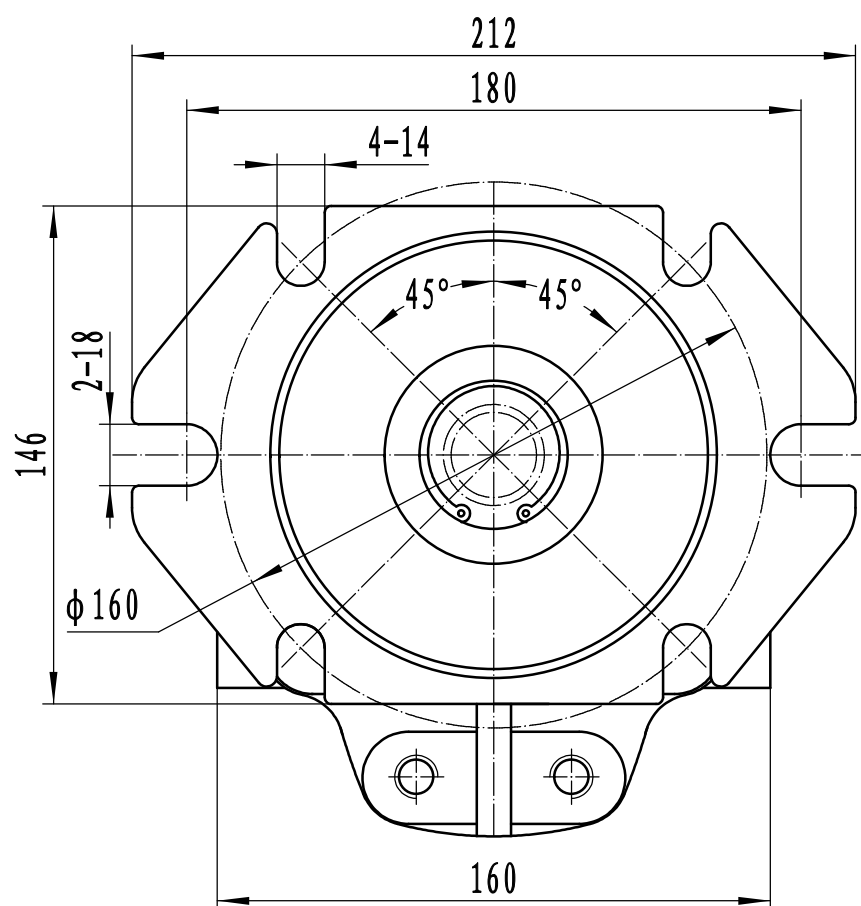
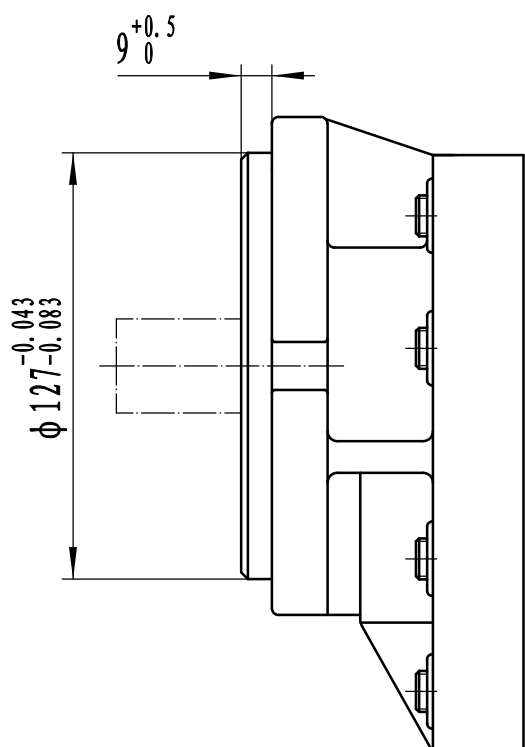
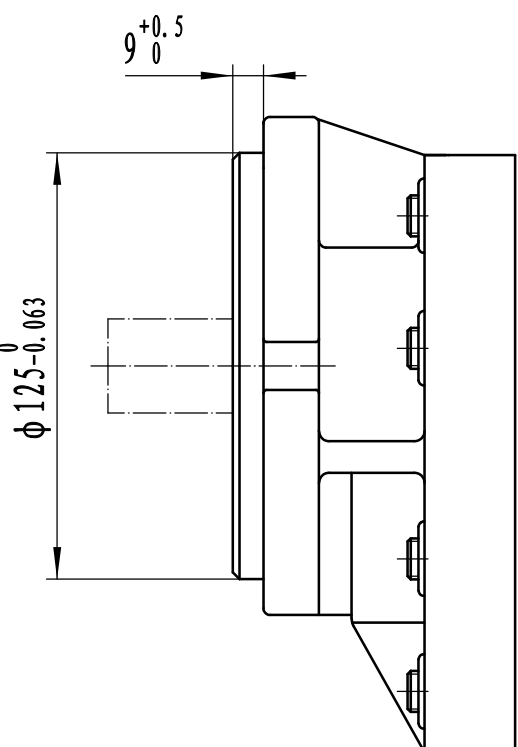
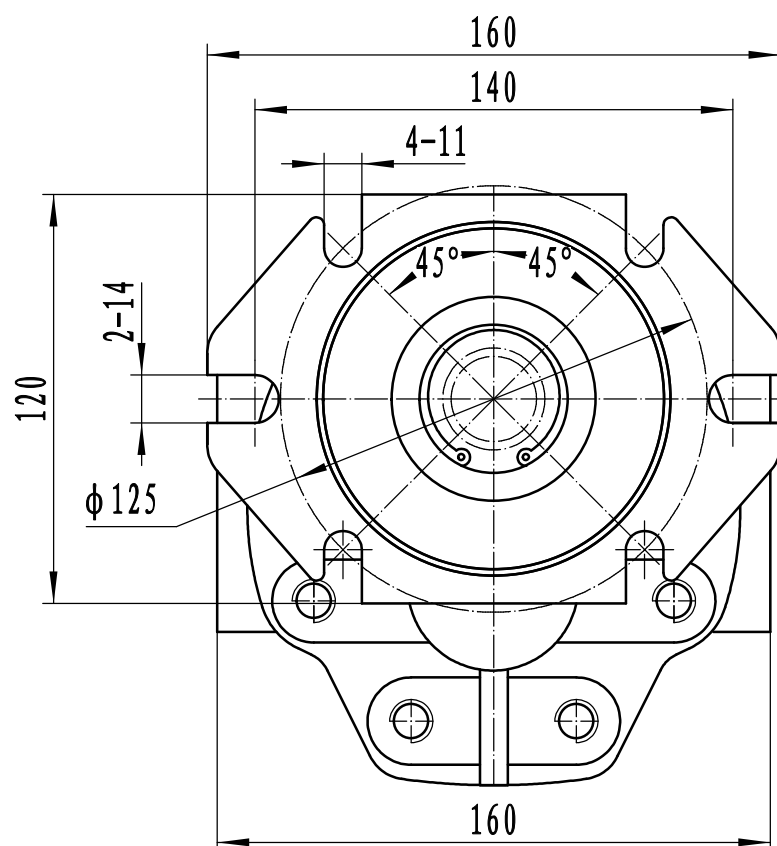
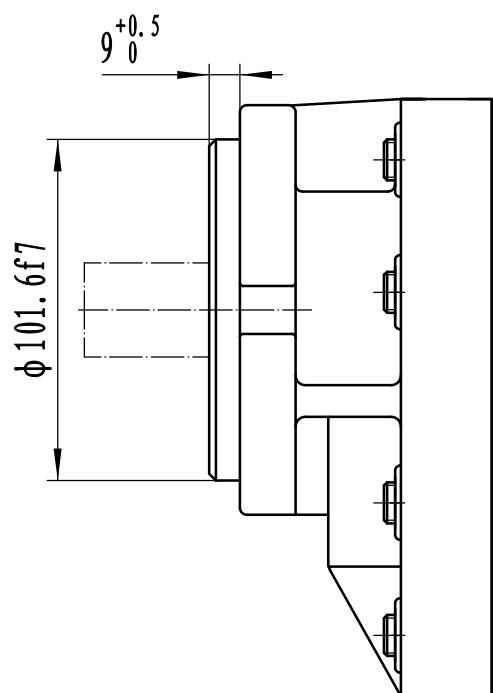
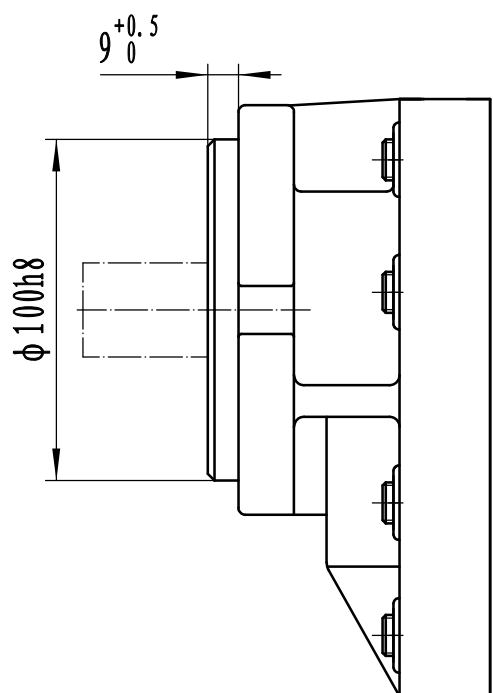


说明：尺寸“A、B”见“性能参数”

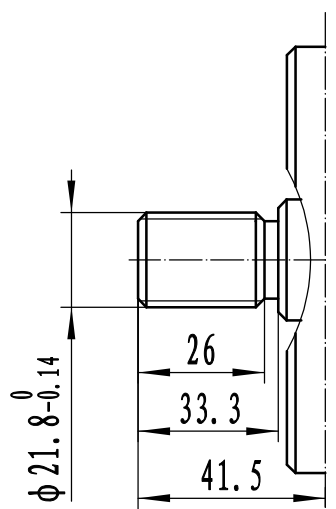
Note: Dimension "A、B" are covered in "performance"



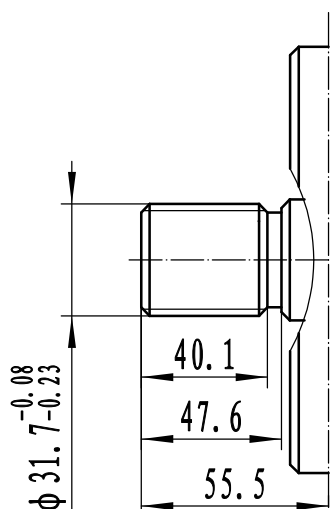
前盖型式 SHAFT END COVERS



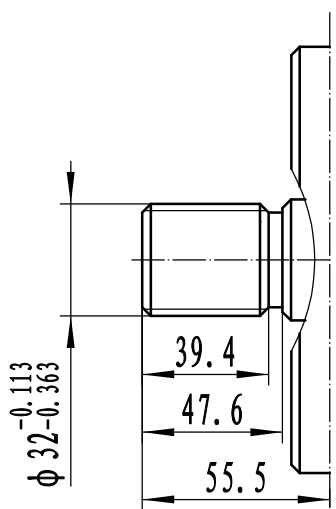
轴伸型式 DRIVE SHAFTS



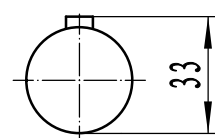
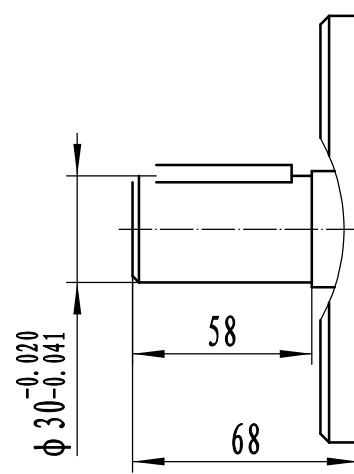
SAE花键参数 SAEspline	
齿数 No. of tooth	13
径节 DP	16/32
压力角 Pressure angle	30°



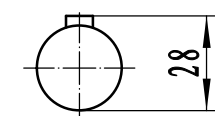
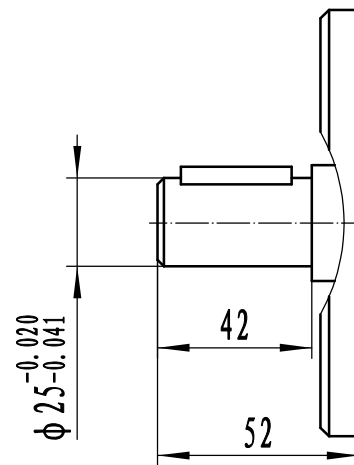
SAE花键参数 SAEspline	
齿数 No. of tooth	14
径节 DP	16/32
压力角 Pressure angle	30°



SAE花键参数 SAEspline	
齿数 No. of tooth	15
模数 Modulus	2
压力角 Pressure angle	30°



键: 8X50 GB1096-79
KEY: 8(W)X50(L)



键: 8X36 GB1096-79
KEY: 8(W)X36(L)