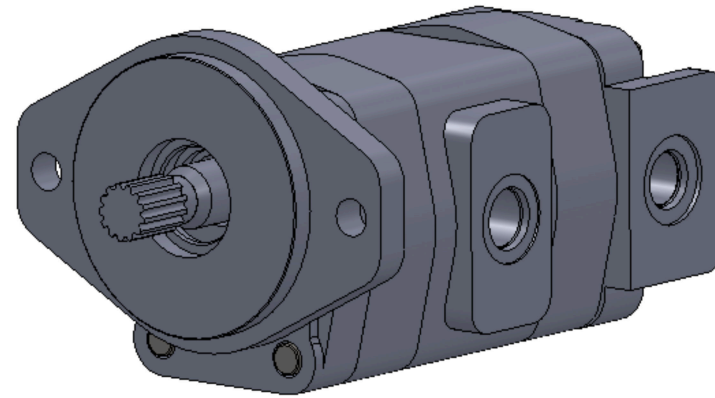


# P5系列齿轮泵简介

Introduction to P5 Series Gear Pumps

## 特点

- 结构紧凑的重载轴套设计
- 排量从5至40ml/r
- 工作压力可达到28MPa
- 工作转速可达到3000r/min
- 采用高强度铸铁结构
- 可以组装成单联泵、双联泵、三联及四联泵结构
- 高强度合金钢齿轮和连接轴
- 安装形式、油口、轴伸有多种设计可供选择
- 特殊耐磨涂层的浮动侧板保证高效率的输出
- 前后盖及泵体采用高精度的过渡配合圆柱销连接
- 100%出厂试验检测

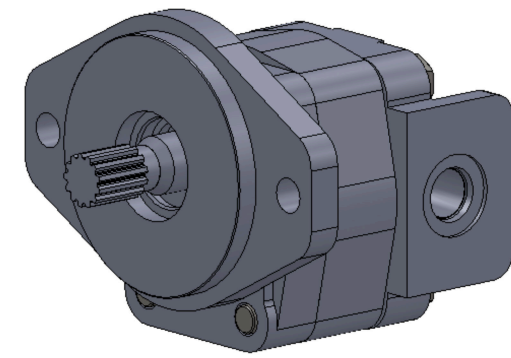


## FEATURES

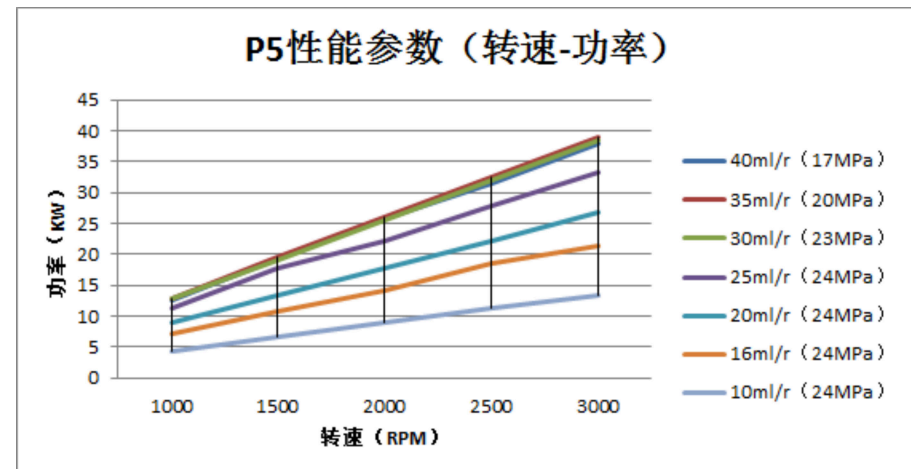
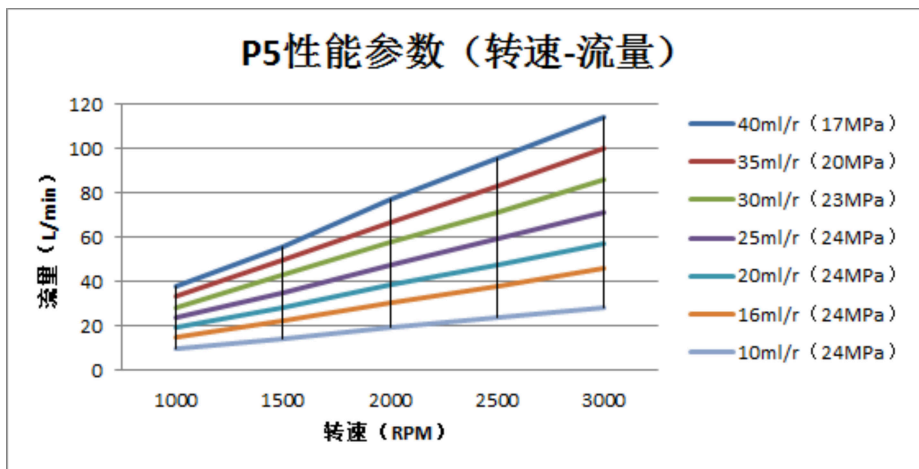
- Heavy duty sleeve bushing design in a small frame size
- Cubic inch displacement from 0.31 through 2.48
- Working pressure up to 4000 PSI
- Speeds up to 3000 RPM
- High strength cast iron construction

It is stable and reliable, long service life and light weight

- Can be assembled into a single pump, double and triple pump structure
- High strength alloy steel gear and shaft sets
- A wide range of porting, mounting and shaft options available
- Floating side panels with special wear-resistant coatings to ensure efficient output
- Cover and pump body with high precision transition with cylindrical pin connection
- 100% factory tested



## 性能曲线 PERFORMANCE CURVE



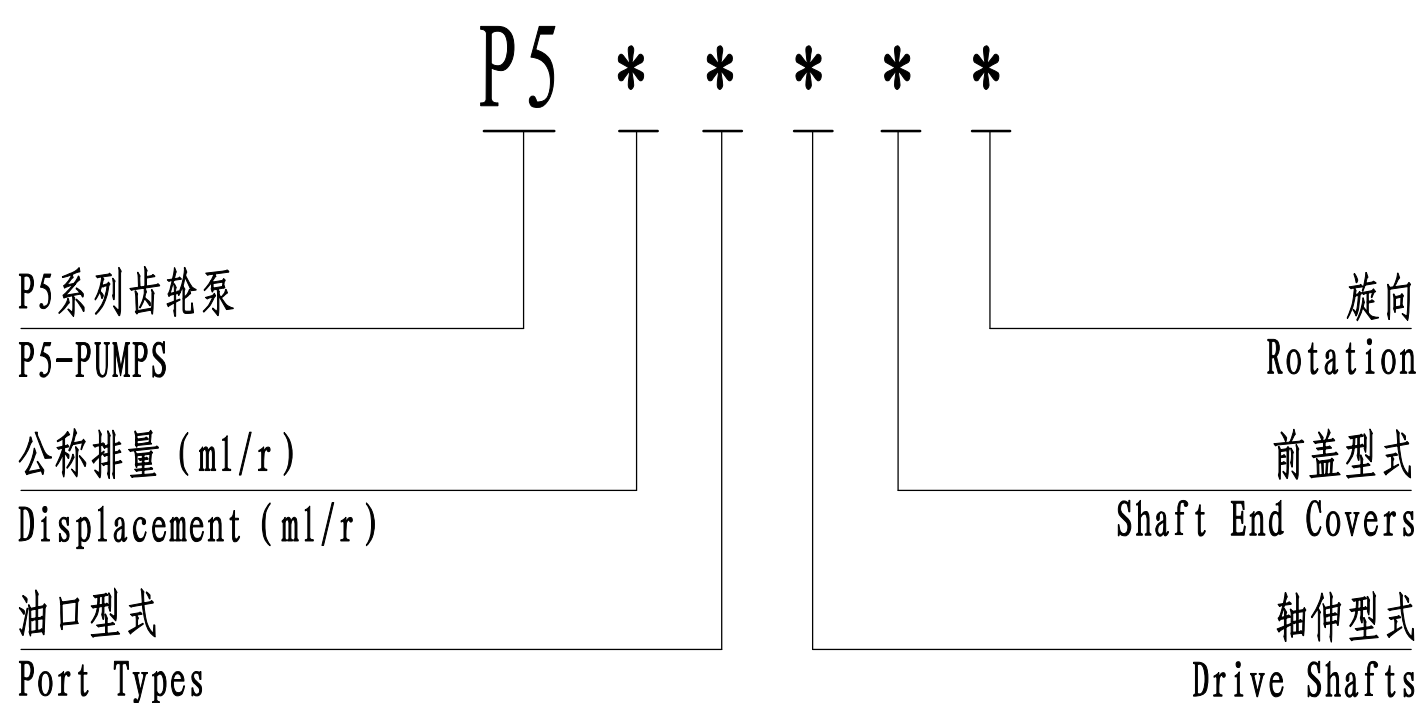
性能曲线是基于一系列试验结果汇总得出的，其数值不代表单独一台产品的性能。  
Performance data given is based on a series of test and is representative of any one unit.

### 使用领域 APPLICATION FIELD

该产品设计构造适用于：专用汽车、混凝土机械、工程起重机械、铲土运输机械、桩工机械、矿山机械、钻探机械、压实机械、路面机械等领域

Applicable to: special vehicles, concrete machinery, engineering lifting machinery, shovel soil transport machinery, pile machinery, mining machinery, drilling machinery, compaction machinery, road machinery and other fields

### 标准型号说明 STANDARD MODEL IDENTIFICATION

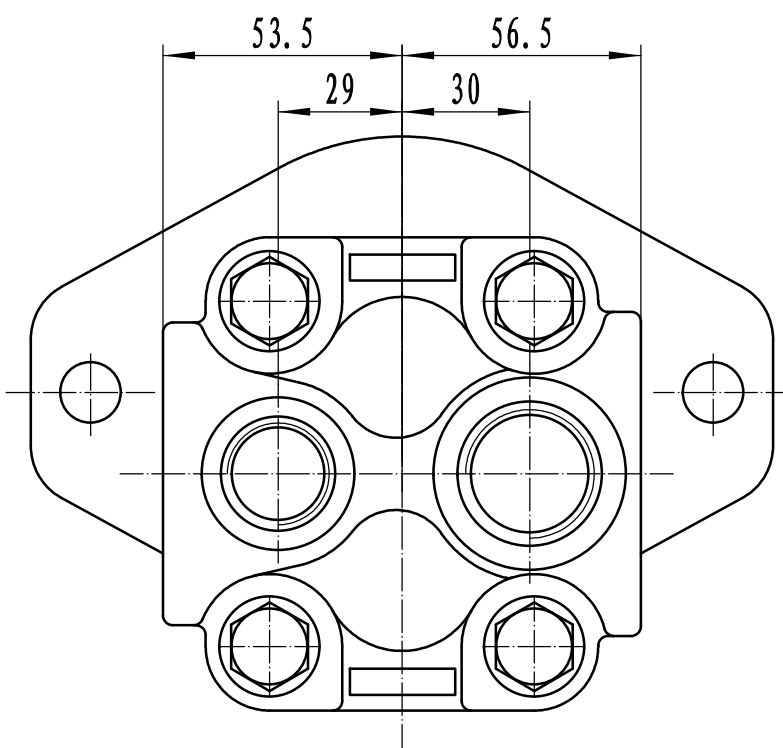
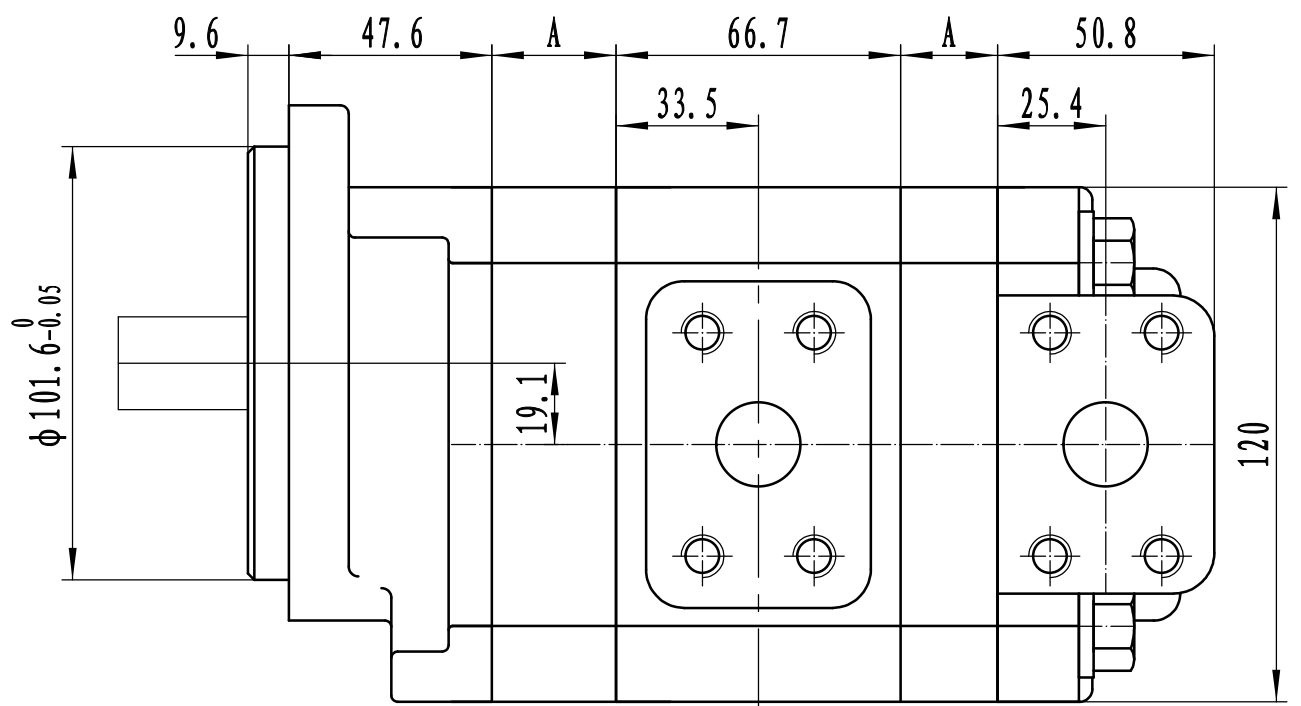
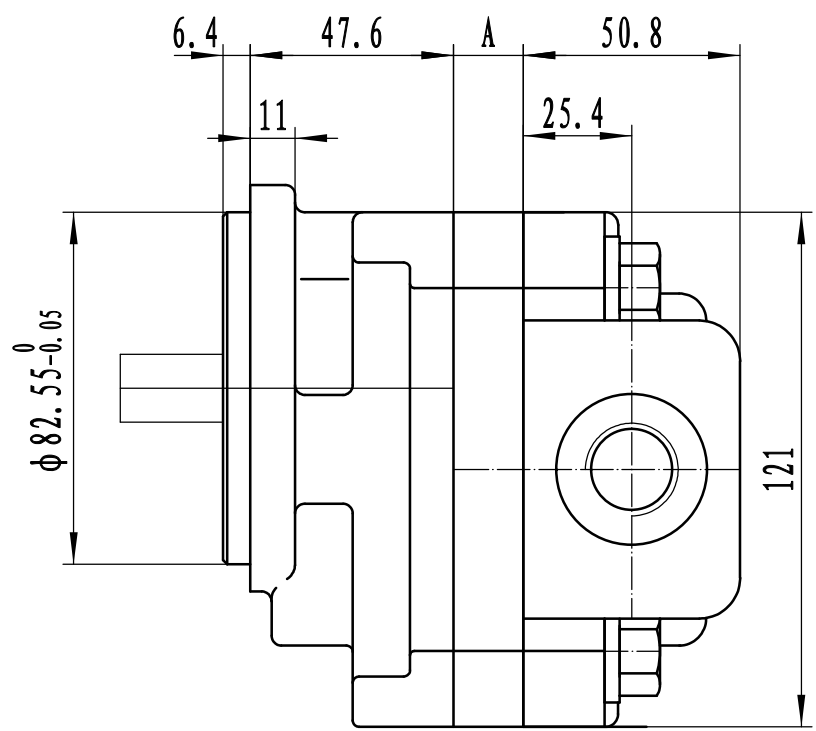


非标准产品型号请咨询派士乐研发中心  
For non-standard product options ,consult PARSLE R&D Dept.

### 性能参数 PERFORMANCE

型号 Model	公称排量 Nominal displacement (ml/r)	额定压力 Rated Pressure (MPa)	最高压力 Max. Pressure (MPa)	最高转速 Max. Speed (r/min)	最低转速 Min. Speed (r/min)	A (mm)
P505****	5	25	28	3000	600	16.4
P508****	8					19.6
P510****	10					22.7
P512****	12.5					25.9
P516****	16					29.1
P518****	18					32.3
P520****	20					35.4
P525****	25	21	25	3000	600	41.8
P530****	30					48.1
P533****	33					51.3
P535****	35	18	21	3000	600	54.5
P540****	40					60.8

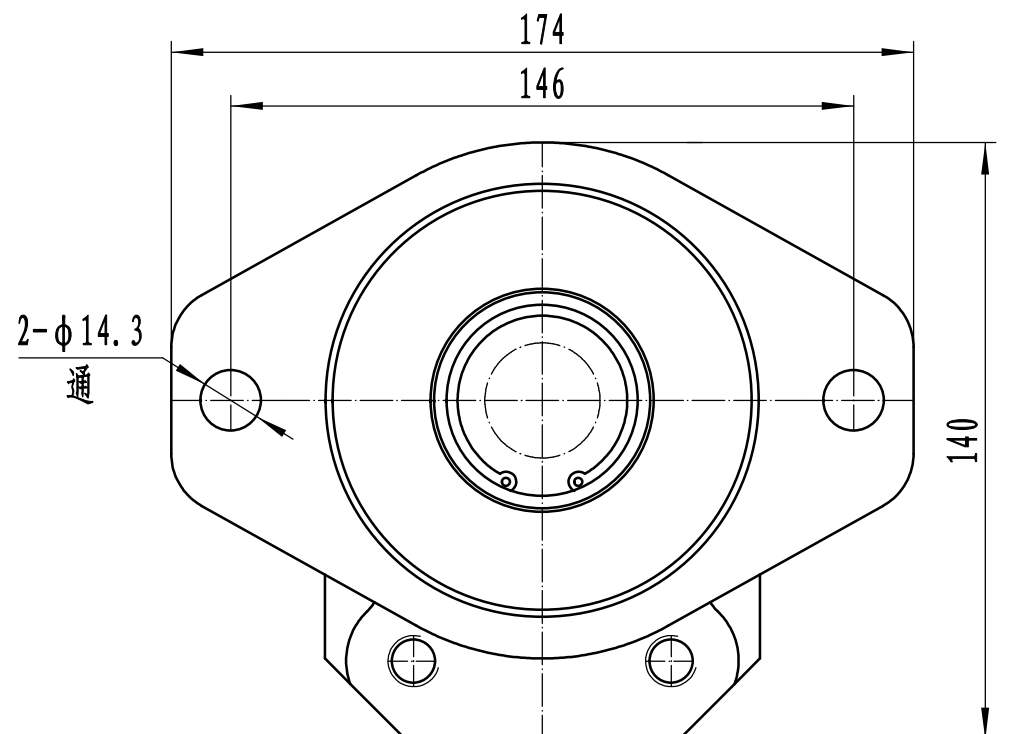
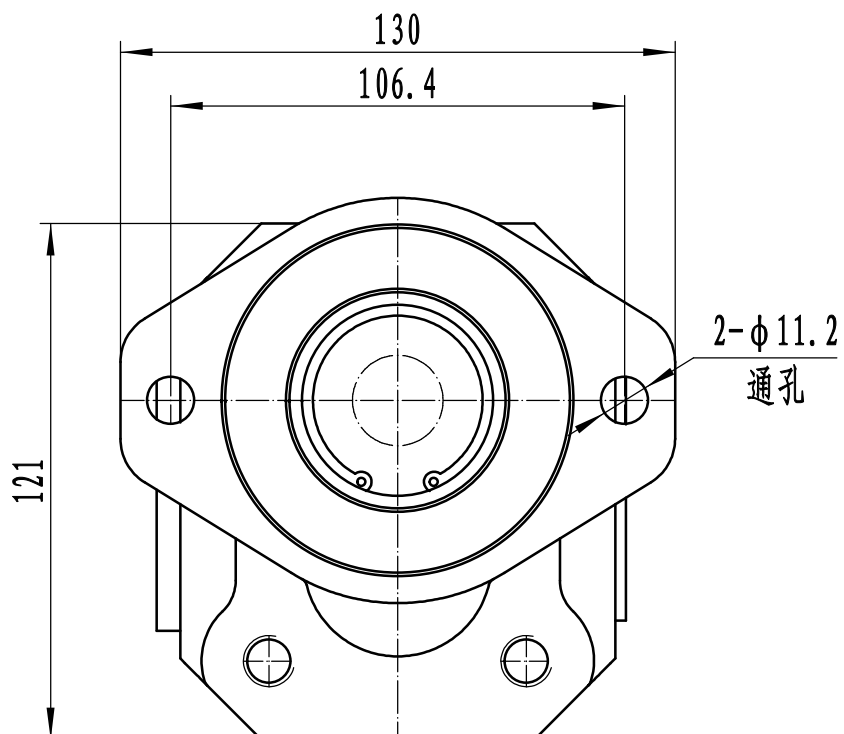
外形尺寸 Outline Dimensions



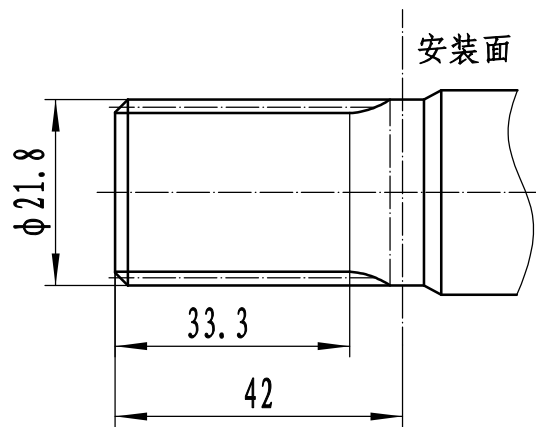
说明: 尺寸 "A" 见 "性能参数"

Note: Dimension "A" are covered in "performance"

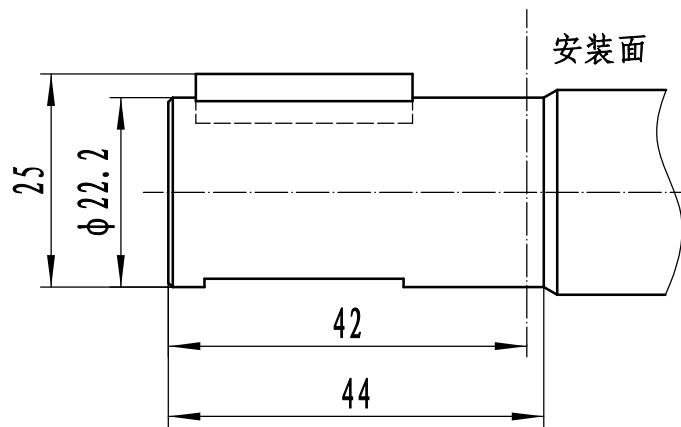
前盖型式 SHAFT END COVERS



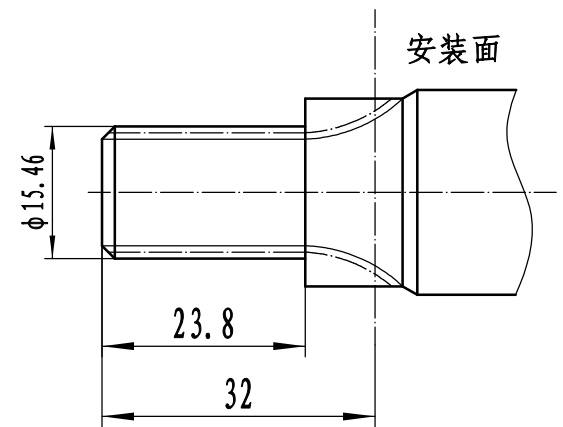
轴伸型式 DRIVE SHAFTS



SAE花键参数 SAEsplines	
齿数 No. of tooth	13
径节 DP	16/32
压力角 Pressure angle	30°

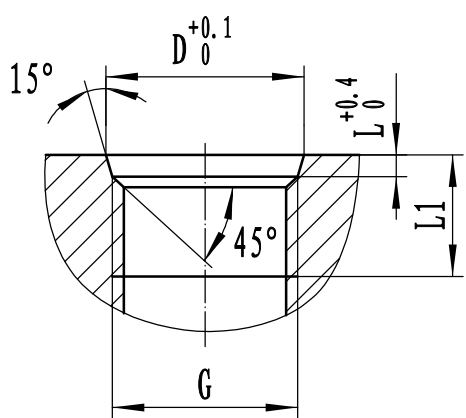


SAE 平键  
 键: 6.35X6.35X25.4  
 KEYED SAE  
 KEY: 1/4" (W) X1/4" (H) X1" (L)

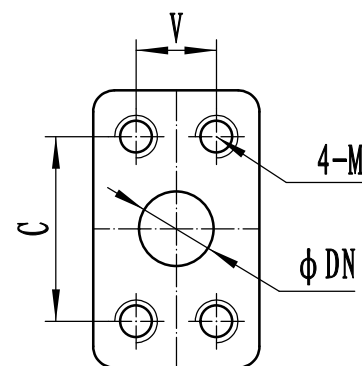


SAE花键参数 SAEsplines	
齿数 No. of tooth	9
径节 DP	16/32
压力角 Pressure angle	30°

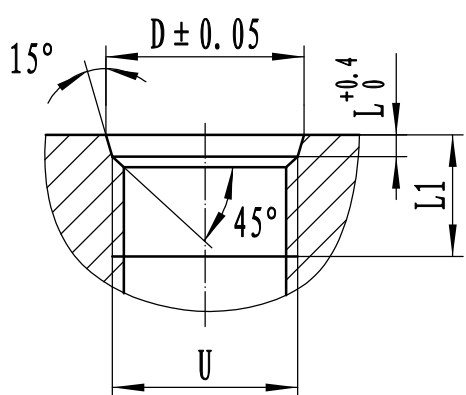
油口型式 PORT TYPES



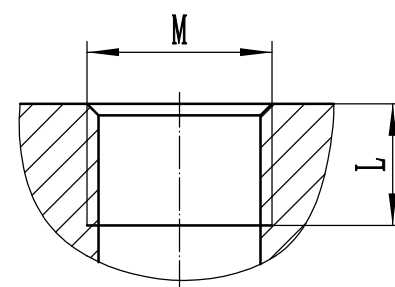
管螺纹油口 BSPP PORT			
G	D	L	L1
G1	35.8	3.5	21
G1/2	30.46	3.92	17
G3/4	22.6	2.5	16



公制法兰油口 Metric Split Flange Port			
DN	C	V	M
19	47.6	22.3	M10
25	52.4	26.2	深15
32	58.7	30.2	deep15



英制螺纹油口 STRAIGHT THREAD PORT			
U	D	L	L1
1-5/16-12UN-2B	35.55	3.5	19
1-1/16-12UN-2B	29.2	3.5	19
7/8-14UNF-2B	24	2.7	17



公制螺纹油口 Metric Straight thread	
M	L
M22X1.5	16
M27X2	19
M33X2	19