

# T25 系列齿轮泵简介

Introduction to T25 Series Gear Pumps

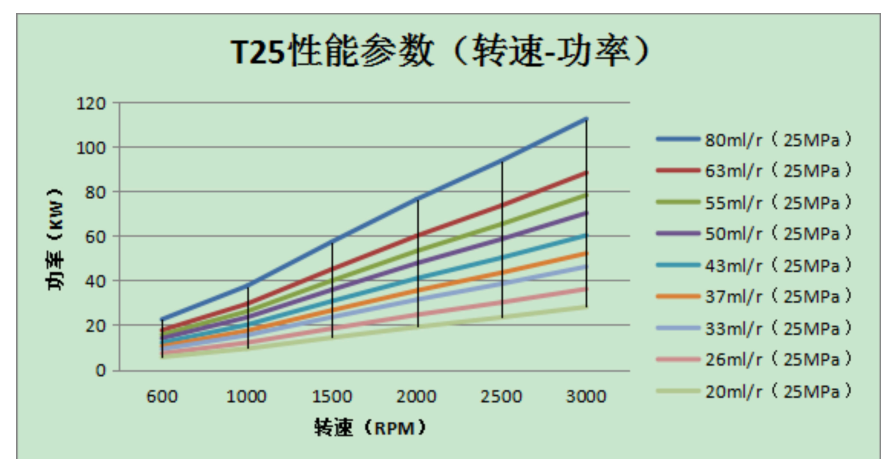
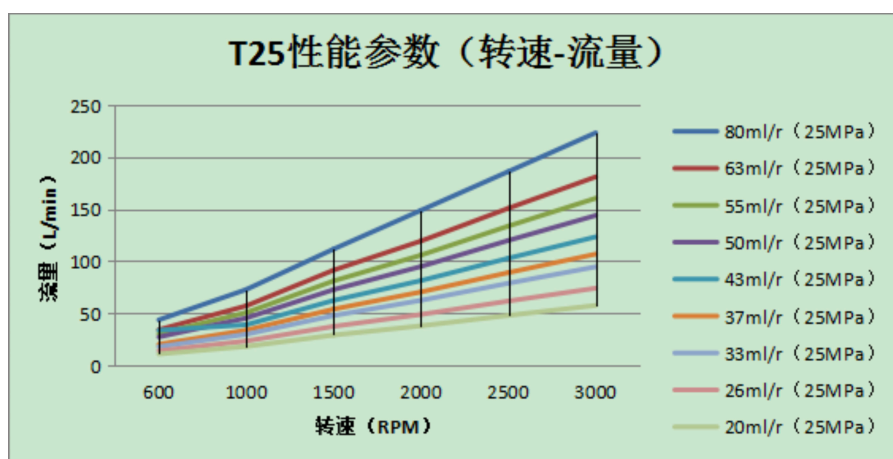
## 特点

- 结构紧凑的重载轴套设计
- 排量覆盖范围广，可实现多排量组合以满足客户的不同需求
- 结构简单，轻型设计，经济耐用
- 采用高强度铸铁两片式结构，使同轴度无误差。
- 可以组装成单联泵、双联泵、三联及四联泵结构
- 安装形式、油口、轴伸有多种设计可供选择
- 100% 出厂试验检测

## FEATURES

- Heavy duty sleeve bushing design in a small frame size
- Wide displacement scope can achieve displacement combination of different series to meet the different needs of customers
- Simple structure, Lightweight design ,economic and durable
- Adopt high-strength cast iron two-piece structure, make coaxiality without error
- Can be assembled into a single pump, double and triple pump structure
- A wide range of porting ,mounting and shaft options available
- 100% factory tested

## 性能曲线 PERFORMANCE CURVE



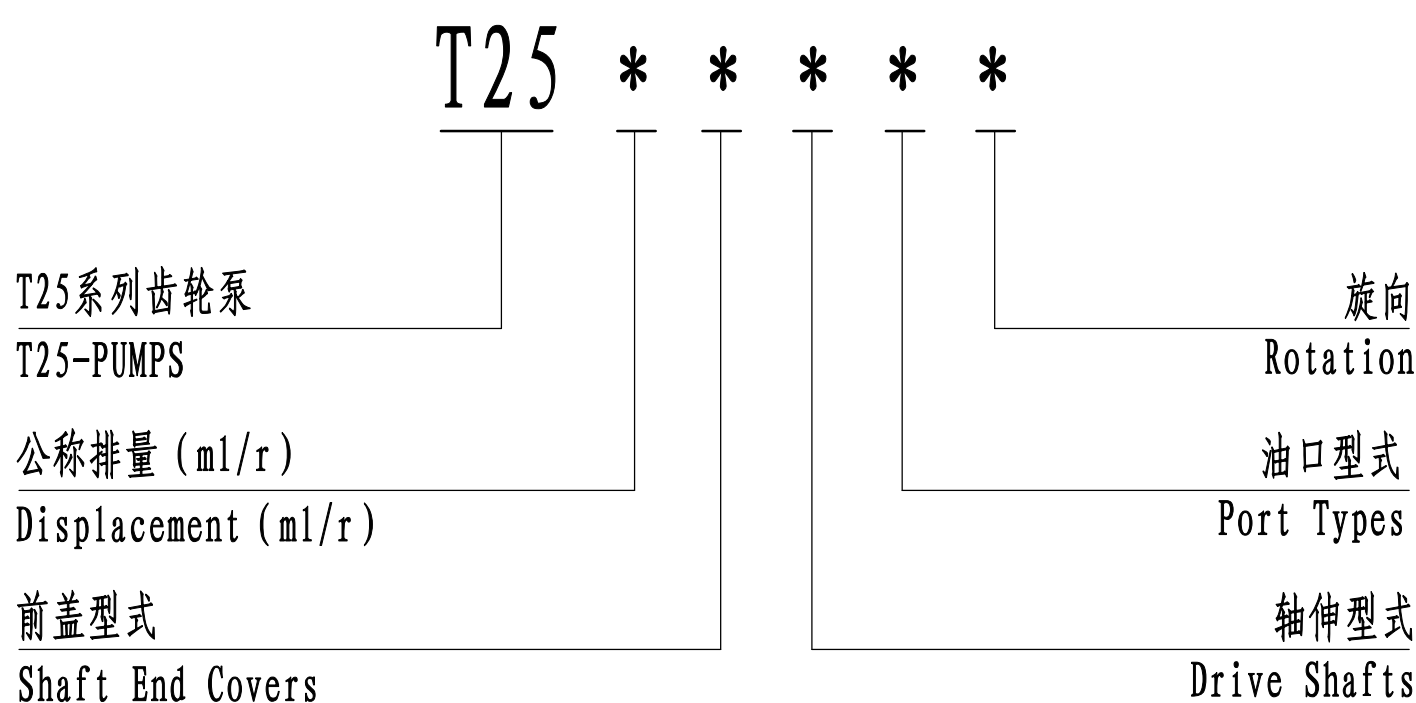
性能曲线是基于一系列试验结果汇总得出的，其数值不代表单独一台产品的性能。  
Performance data given is based on a series of test and is representative of any one unit.

### 使用领域 APPLICATION FIELD

该产品设计构造适用于：专用汽车、混凝土机械、工程起重机械、铲土运输机械、桩工机械、矿山机械、钻探机械、压实机械、路面机械等领域

Applicable to: special vehicles, concrete machinery, engineering lifting machinery, shovel soil transport machinery, pile machinery, mining machinery, drilling machinery, compaction machinery, road machinery and other fields

### 标准型号说明 STANDARD MODEL IDENTIFICATION

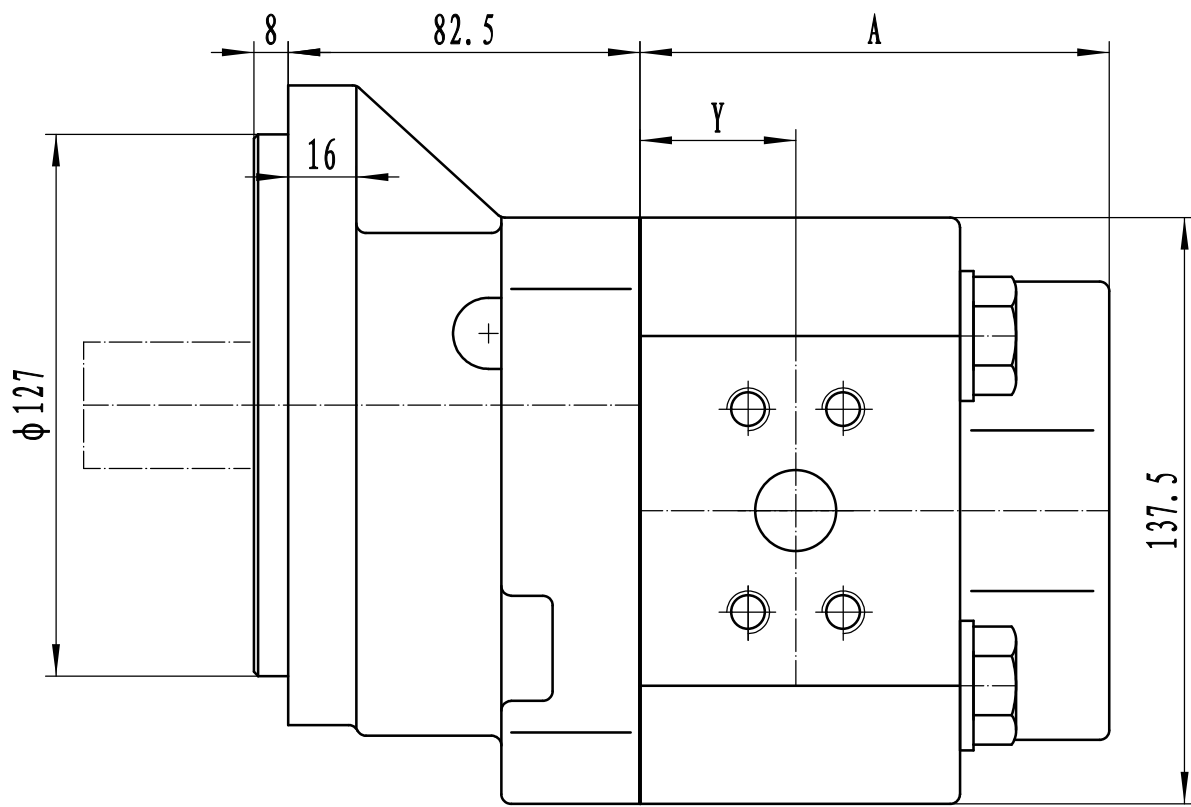


非标准产品型号请咨询派士乐研发中心  
For non-standard product options ,consult PARSLE R&D Dept.

### 性能参数 PERFORMANCE

型号 Model	公称排量 Nominal displacement (ml/r)	额定压力 Rated Pressure (MPa)	最高压力 Max. Pressure (MPa)	最高转速 Max. Speed (r/min)	最低转速 Min. Speed (r/min)	A (mm)	B (mm)
T2520****	20.2	25	28	3000	600	88.0	102.0
T2525****	26.0					92.0	106.0
T2533****	33.2					97.0	111.0
T2537****	37.5					100.0	114.0
T2543****	43.3					104.0	118.0
T2550****	50.5					109.0	123.0
T2555****	56.3					113.0	127.0
T2563****	63.5					118.0	132.0
T2580****	80.9					130.0	144.0

外形尺寸 Outline Dimensions

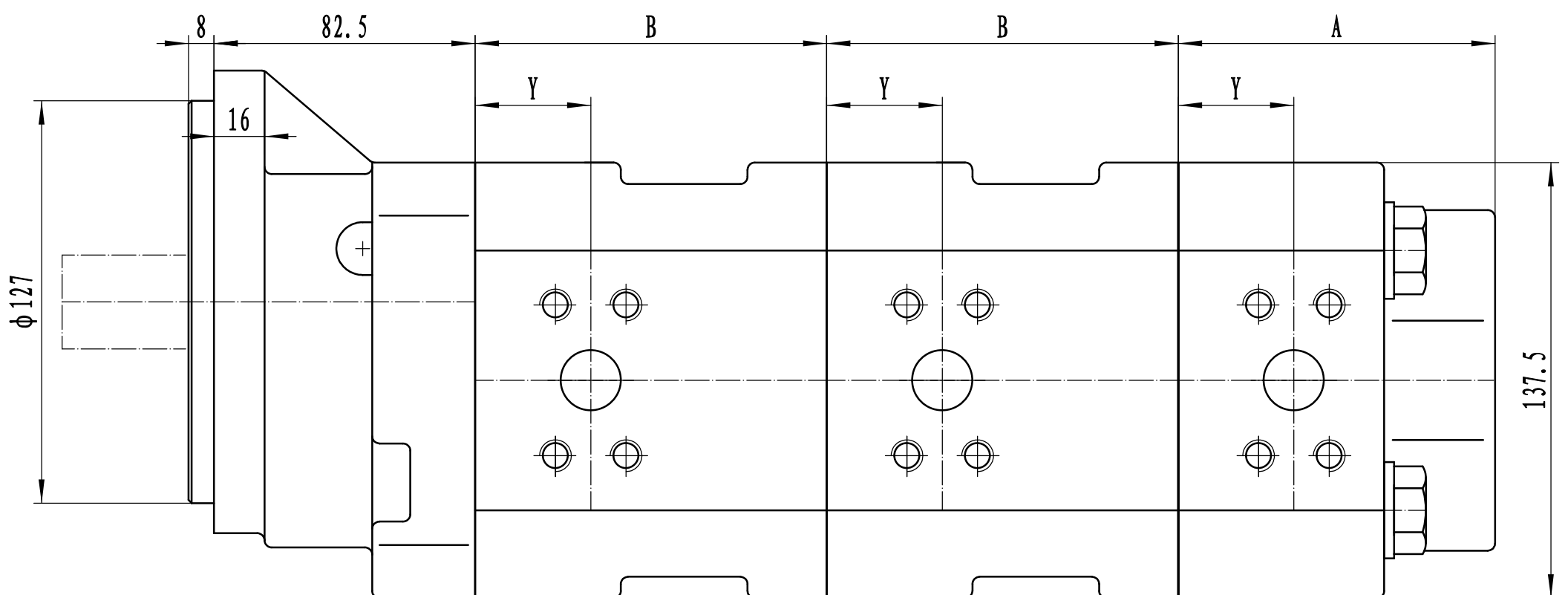
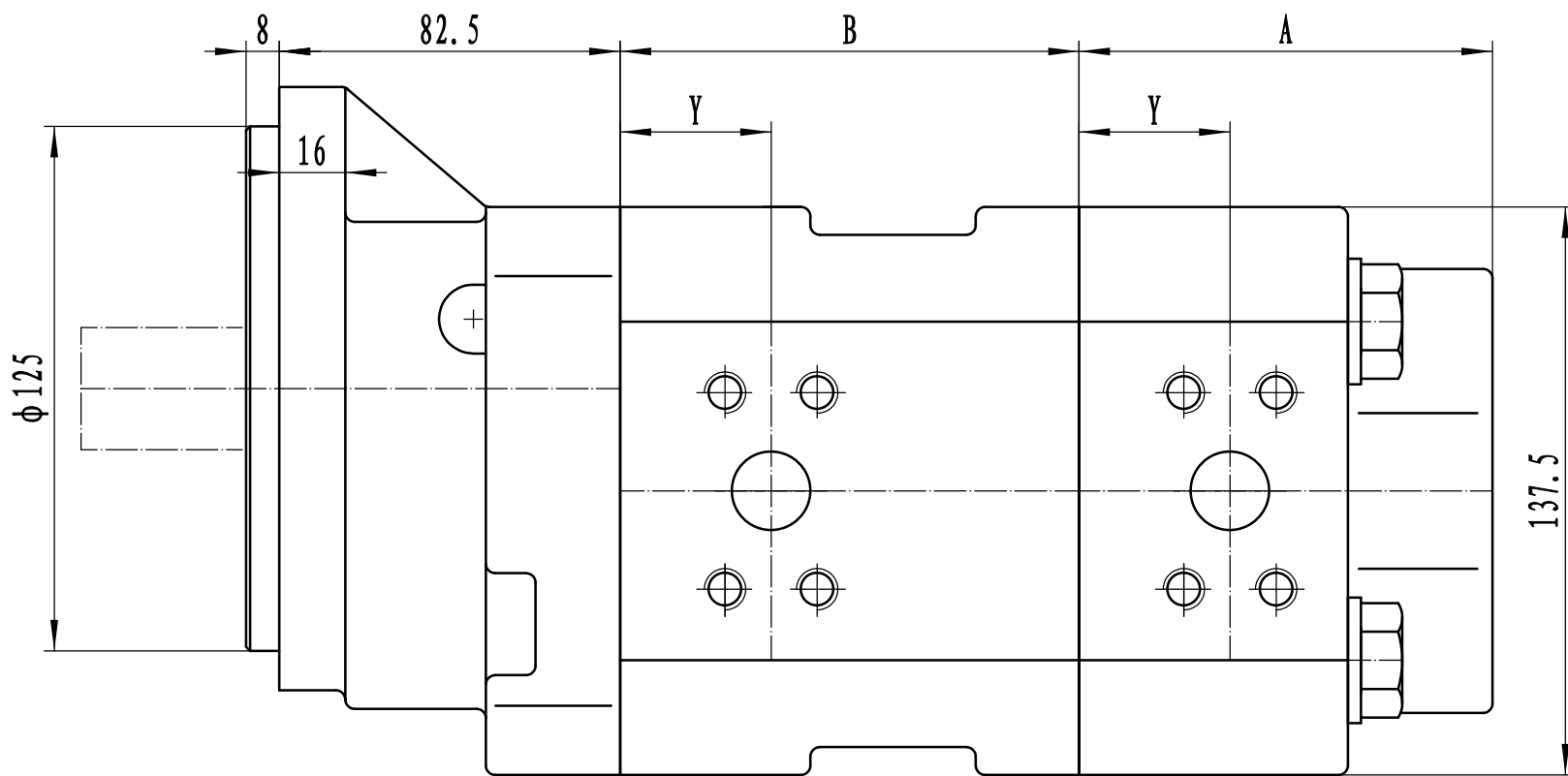


说明: 尺寸 "A、B" 见 "性能参数"

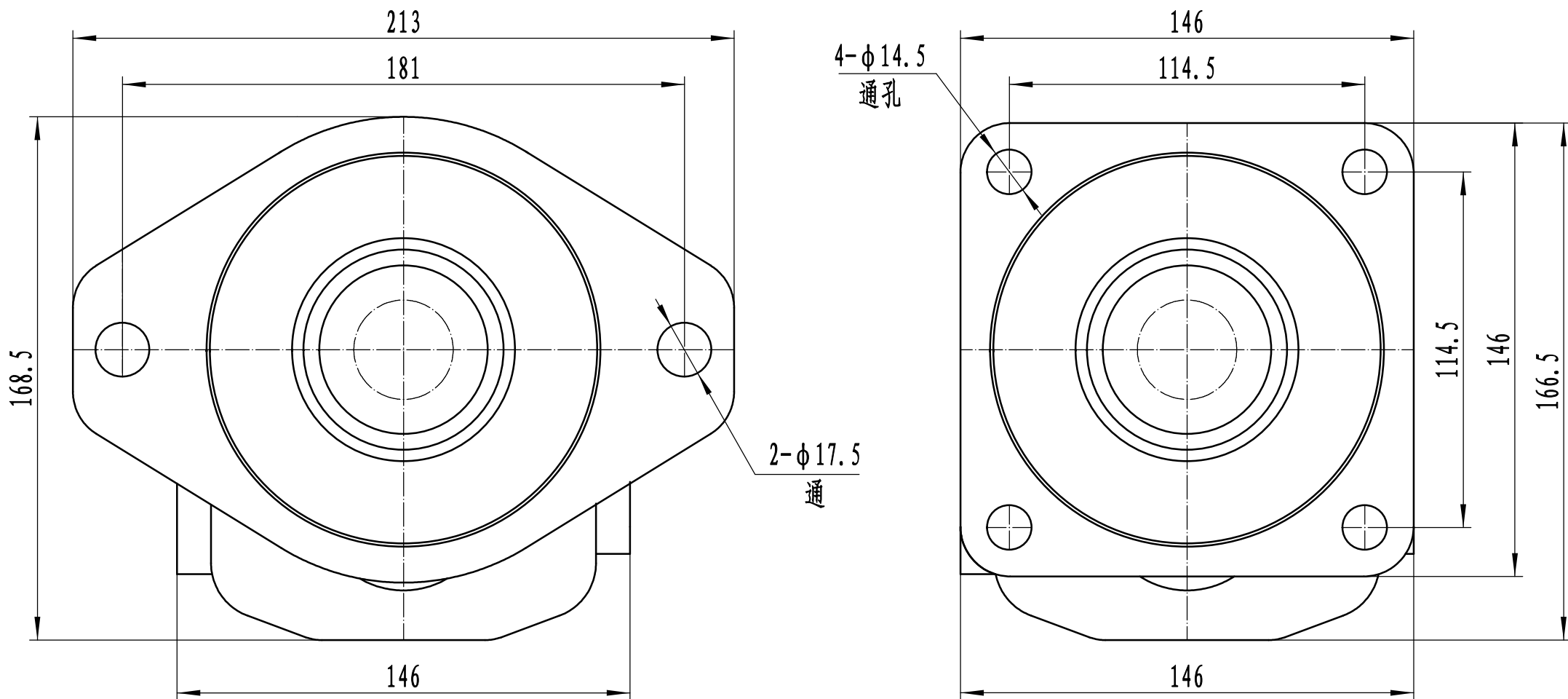
Note: Dimension "A、B" are covered in "performance"

尺寸 "Y" 请咨询派士乐研发中心

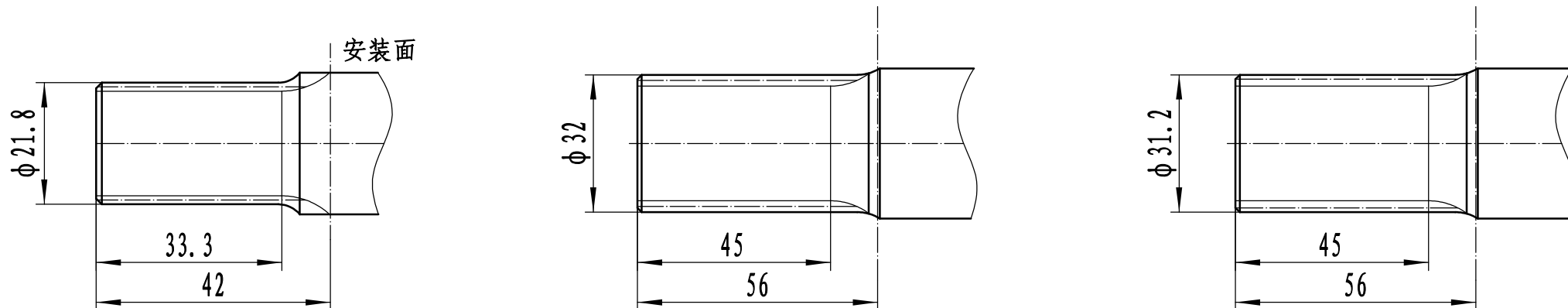
Dimension "Y", consult PARSLE R&D Dept.



前盖型式 SHAFT END COVERS



轴伸型式 DRIVE SHAFTS

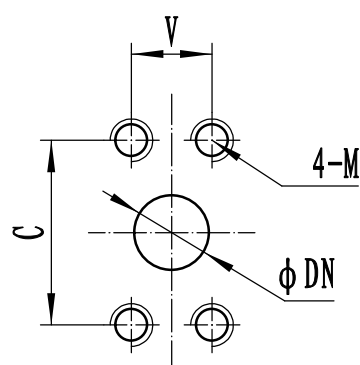


SAE花键参数 SAEsplines	
齿数 No. of tooth	13
径节 DP	16/32
压力角 Pressure angle	30°

SAE花键参数 SAEsplines	
齿数 No. of tooth	15
模数 Modulus	2
压力角 Pressure angle	30°

SAE花键参数 SAEsplines	
齿数 No. of tooth	14
径节 D.P	12/24
压力角 Pressure angle	30°

油口型式 PORT TYPES



公制法兰油口 Metric Split Flange Port			
DN	C	V	M
19.1	47.6	22.3	M10
25.4	52.4	26.2	深20 deep20
31.8	58.7	30.2	
38.1	69.9	35.7	M12
50.8	77.8	42.9	深20 deep20