

# T2-P4 系列齿轮泵简介

*Introduction to T2-P4 Series Gear Pumps*

## 特点

- 采用T2系列和P4系列相互结合的组合形式
- 结构紧凑的重载轴套设计
- 优化的排量范围，可实现多排量组合
- 结构简单，重载设计，经济耐用
- 采用高强度铸铁两片式结构，使同轴度无误差。
- 可以组装成单联泵、双联泵、三联及四联泵结构
- 安装形式、油口、轴伸有多种设计可供选择
- 100% 出厂试验检测

## FEATURES

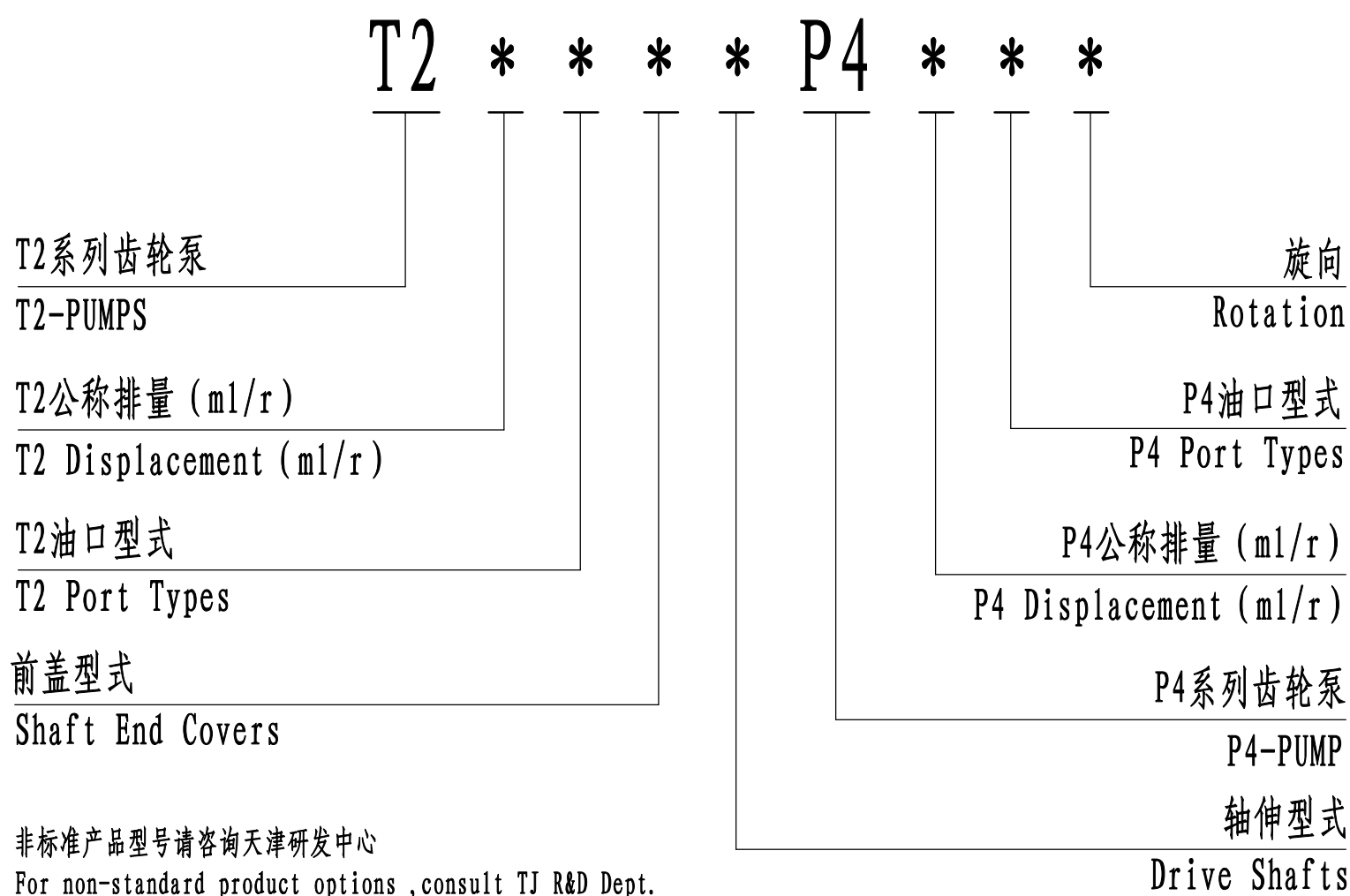
- The combination of the T2 series and the P4 series was adopted
- Heavy duty sleeve bushing design in a small frame size
- Optimization of the displacement range, and can realize the combined displacement
- Simple structure, heavy duty design, economic and durable
- Adopt high-strength cast iron two-piece structure, make coaxiality without error
- Can be assembled into a single pump, double and triple pump structure
- A wide range of porting, mounting and shaft options available
- 100% factory tested

### 使用领域 APPLICATION FIELD

该产品设计构造适用于：专用汽车、混凝土机械、工程起重机械、铲土运输机械、桩工机械、矿山机械、钻探机械、压实机械、路面机械等领域

Applicable to: special vehicles, concrete machinery, engineering lifting machinery, shovel soil transport machinery, pile machinery, mining machinery, drilling machinery, compaction machinery, road machinery and other fields

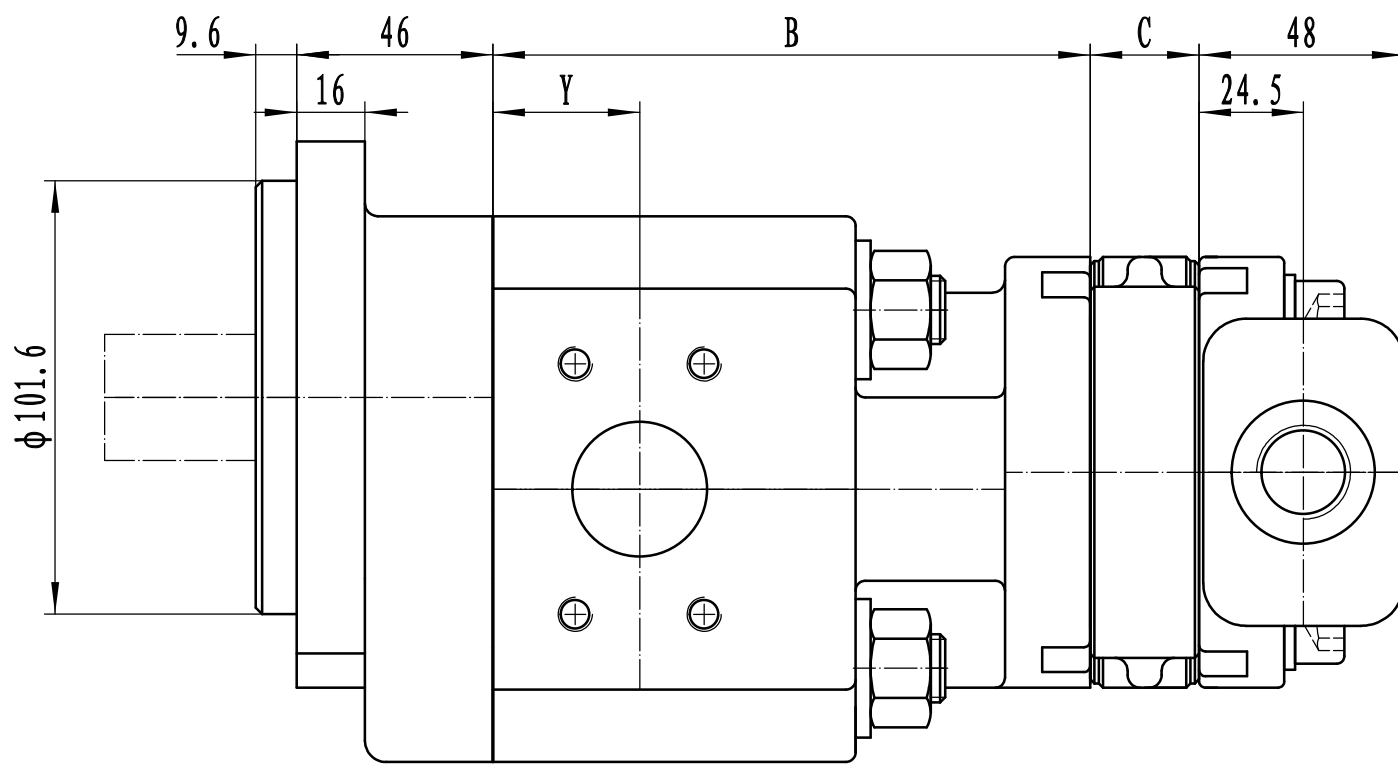
### 标准型号说明 STANDARD MODEL IDENTIFICATION



### 性能参数 PERFORMANCE

型号 Model	理论排量 displacement (ml/r)	额定压力 Rated Pressure (MPa)	最高压力 Max. Pressure (MPa)	A (mm)	B (mm)	型号 Model	理论排量 displacement (ml/r)	额定压力 Rated Pressure (MPa)	最高压力 Max. Pressure (MPa)	最高转速 Max. Speed (r/min)	最低转速 Min. Speed (r/min)	C (mm)
T208	7.50	25	28	105.7	110.5	P406	6	21	24.5	2500	600	23.0
T216	14.9			109.9	123.5	P408	8					25.5
T222	22.4			115.3	129.0	P410	10					28.0
T230	29.8			118.4	132.5	P412	12					30.0
T237	37.3			124.8	138.5	P416	16					35.0
T245	44.8			131.1	145.0	P420	20					40.0
T250	52.2			134.3	148.0	P423	23					44.0
T260	59.7			140.7	154.5	P425	25					45.5
T267	67.2			143.8	158.0	P427	27					49.0

外形尺寸 Outline Dimensions

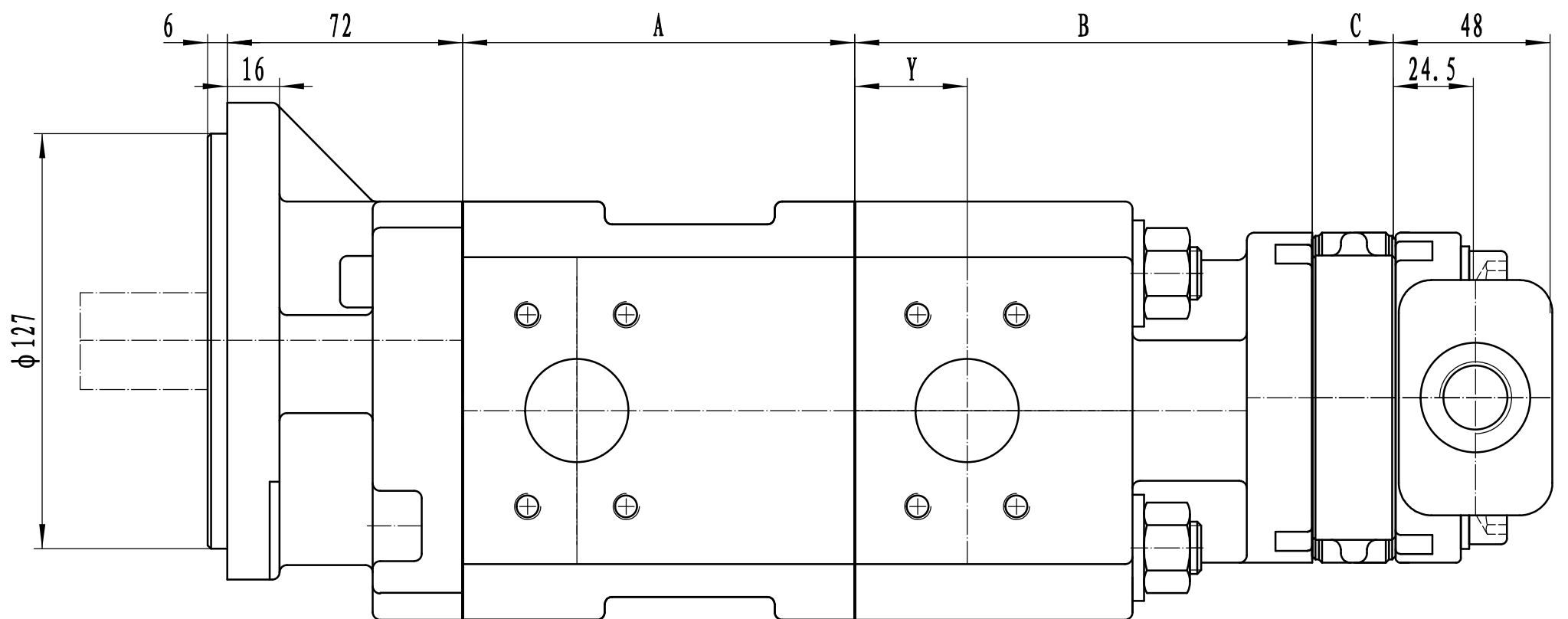
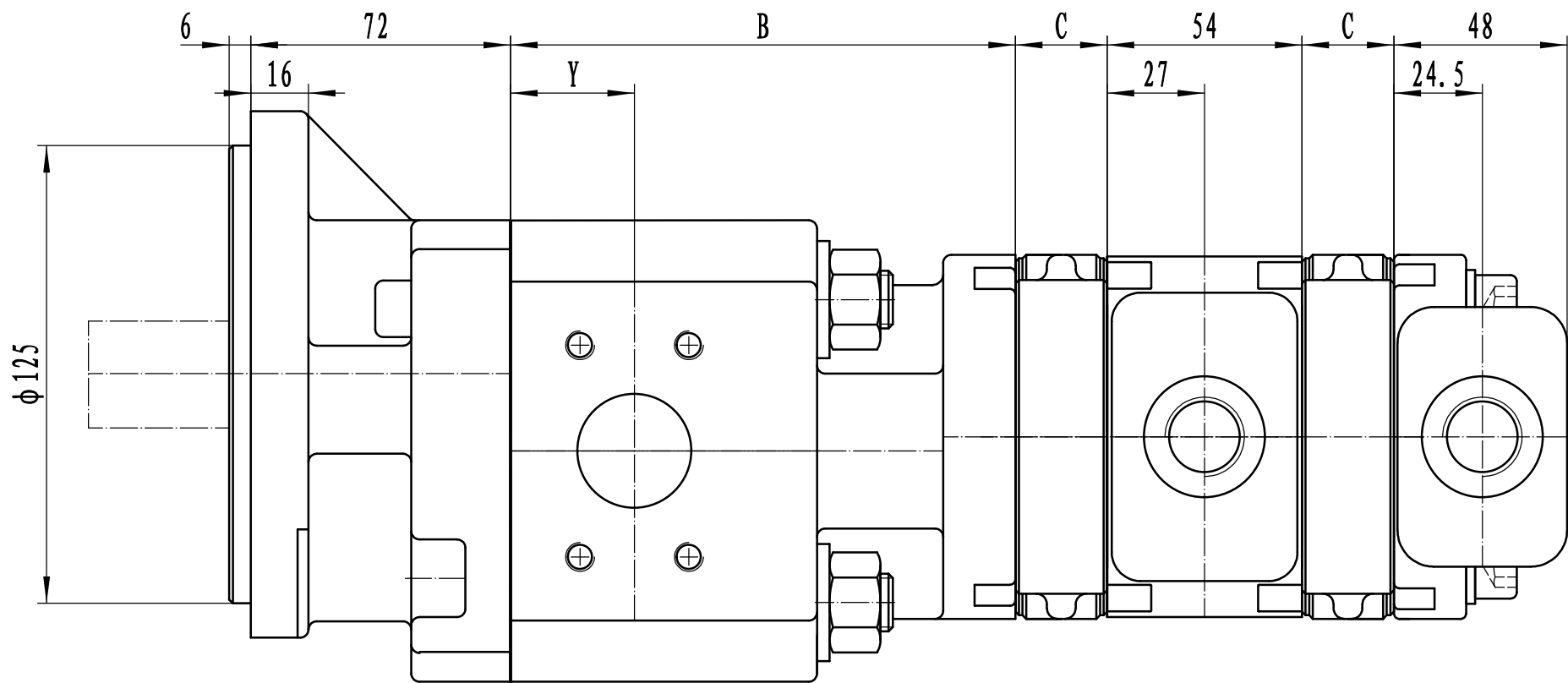


说明: 尺寸 "A、B" 见 "性能参数"

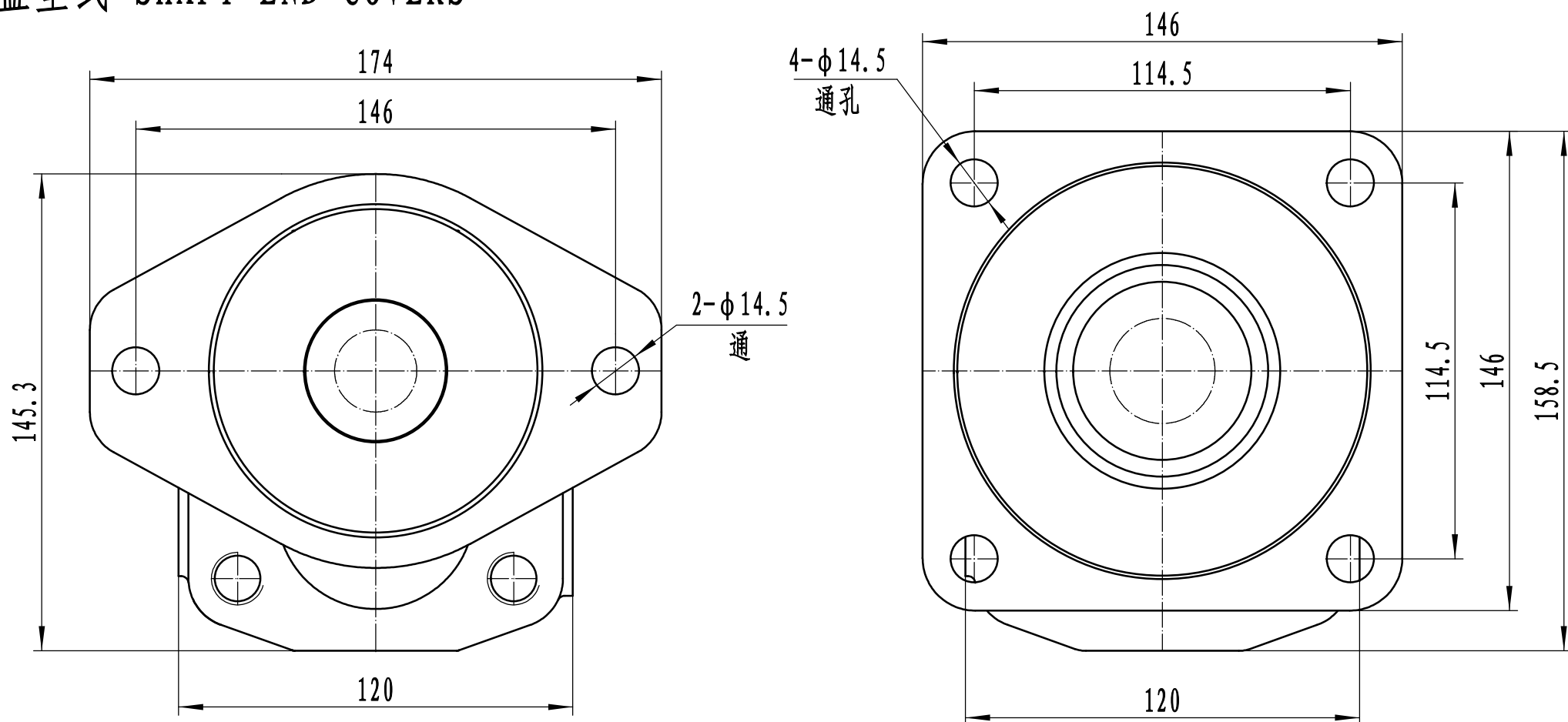
Note: Dimension "A、B" are covered in "performance"

尺寸 "Y" 请咨询派士乐研发中心

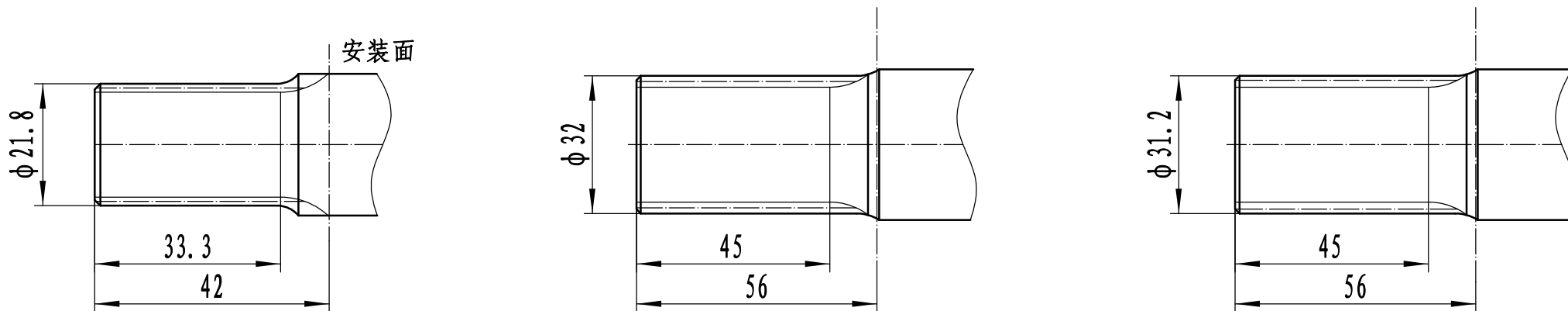
Dimension "Y", consult PARSLE R&D Dept.



前盖型式 SHAFT END COVERS



轴伸型式 DRIVE SHAFTS

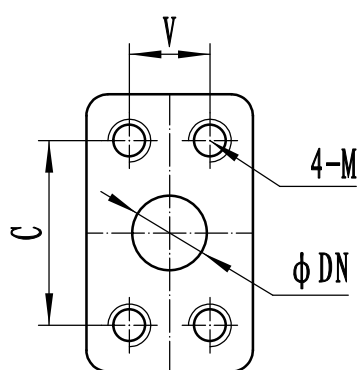


SAE花键参数 SAEsplines	
齿数 No. of tooth	13
径节 DP	16/32
压力角 Pressure angle	30°

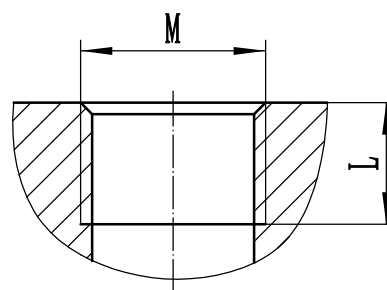
SAE花键参数 SAEsplines	
齿数 No. of tooth	15
模数 Modulus	2
压力角 Pressure angle	30°

SAE花键参数 SAEsplines	
齿数 No. of tooth	14
径节 D.P	12/24
压力角 Pressure angle	30°

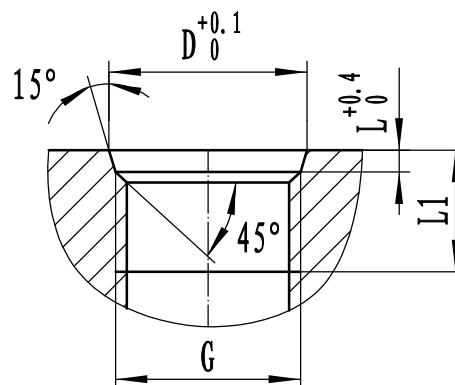
油口型式 PORT TYPES



P6公制法兰油口 P6 Metric Split Flange Port			
DN	C	V	M
19.1	47.6	22.3	M10 深20 deep20
25.4	52.4	26.2	
31.8	58.7	30.2	
38.1	69.9	35.7	M12 深20 deep20



P4公制螺纹油口 P4 Metric Straight thread	
M	L
M18X1.5	14
M22X1.5	16
M27X2	19
M33X2	19



P4管螺纹油口 P4 BSPP PORT			
G	D	L	L1
G1	35.8	3.5	21
G1/2	30.46	3.92	17
G3/4	22.6	2.5	16