

T25-P5 系列齿轮泵简介

Introduction to T25-P5 Series Gear Pumps

特点

- 结构紧凑的重载轴套设计
- 排量覆盖范围广，可实现多排量组合以满足客户的不同需求
- 结构简单，轻型设计，经济耐用
- 采用高强度铸铁两片式结构，使同轴度无误差。
- 可以组装成单联泵、双联泵、三联及四联泵结构
- 安装形式、油口、轴伸有多种设计可供选择
- 100% 出厂试验检测

FEATURES

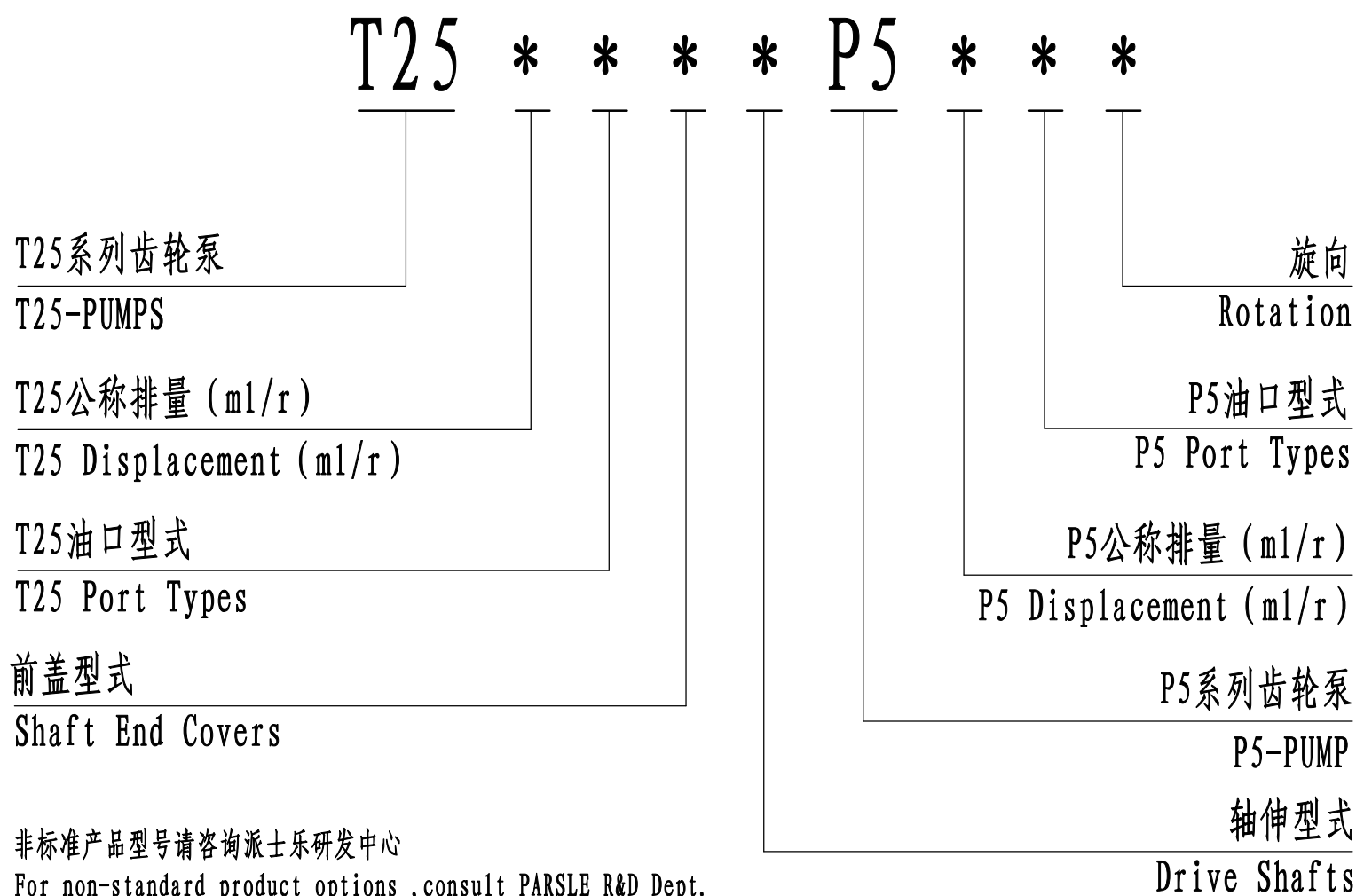
- Heavy duty sleeve bushing design in a small frame size
- Wide displacement scope can achieve displacement combination of different series to meet the different needs of customers
- Simple structure, Lightweight design ,economic and durable
- Adopt high-strength cast iron two-piece structure, make coaxiality without error
- Can be assembled into a single pump, double and triple pump structure
- A wide range of porting ,mounting and shaft options available
- 100% factory tested

使用领域 APPLICATION FIELD

该产品设计构造适用于：专用汽车、混凝土机械、工程起重机械、铲土运输机械、桩工机械、矿山机械、钻探机械、压实机械、路面机械等领域

Applicable to: special vehicles, concrete machinery, engineering lifting machinery, shovel soil transport machinery, pile machinery, mining machinery, drilling machinery, compaction machinery, road machinery and other fields

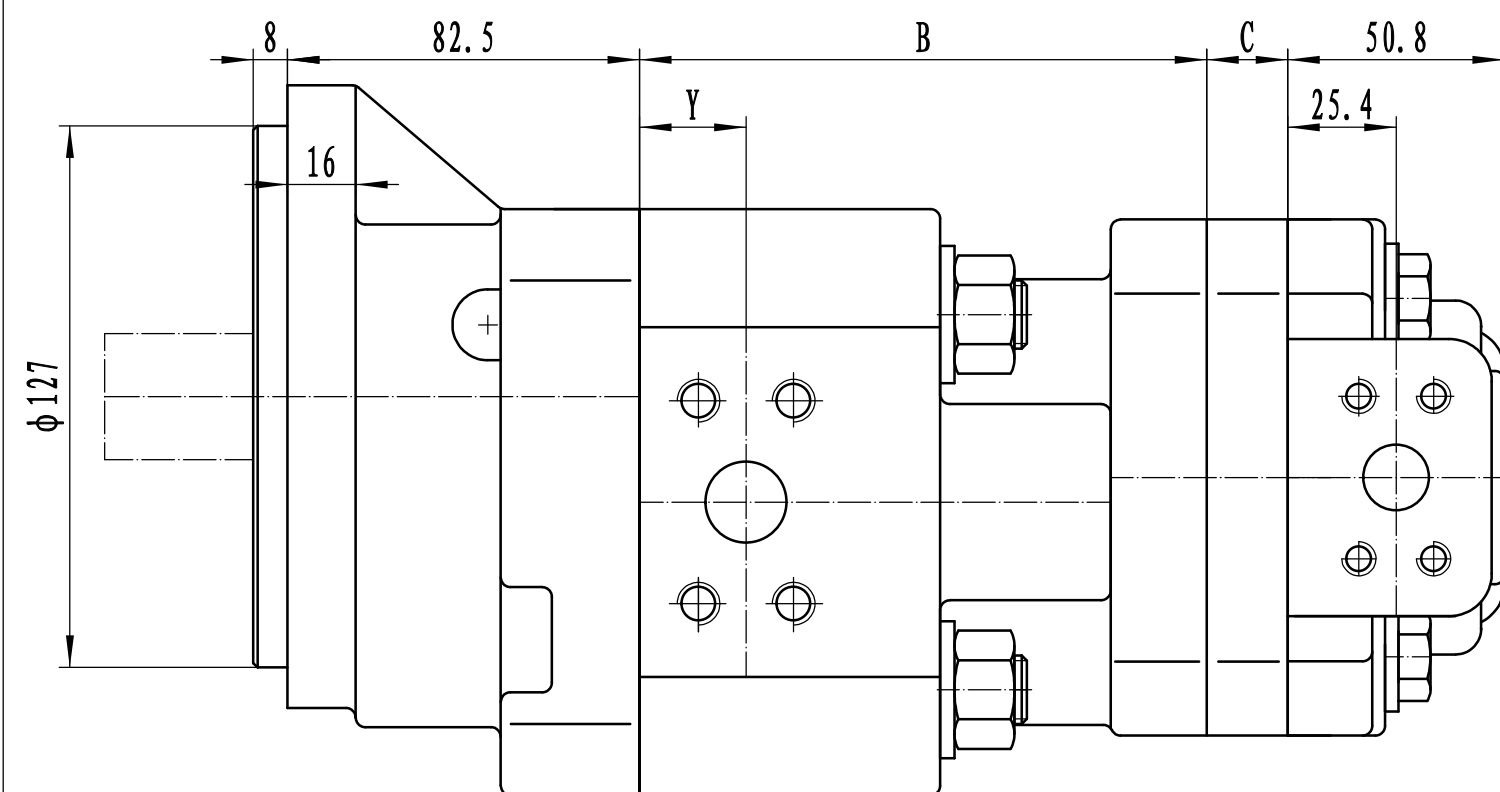
标准型号说明 STANDARD MODEL IDENTIFICATION



性能参数 PERFORMANCE

型号 Model	理论排量 displacement (ml/r)	额定压力 Rated Pressure (MPa)	最高压力 Max. Pressure (MPa)	A (mm)	B (mm)	型号 Model	理论排量 displacement (ml/r)	额定压力 Rated Pressure (MPa)	最高压力 Max. Pressure (MPa)	最高转速 Max. Speed (r/min)	最低转速 Min. Speed (r/min)	C (mm)
T2520	20.2	25	28	102	114	P505	5.1	25	28	2500	600	16.4
T2525	26.0			106	118	P508	8.2					19.6
T2533	33.2			111	123	P510	10.16					22.7
T2537	37.5			114	126	P512	12.5					25.9
T2543	43.3			118	130	P516	15.23					29.0
T2550	50.5			123	135	P520	20.31					35.4
T2555	56.3			127	139	P525	25.39					41.8
T2563	63.5			132	144	P530	30.47					48.1
T2580	80.9			144	156	P535	35.54	54.5				
								21	25			

外形尺寸 Outline Dimensions

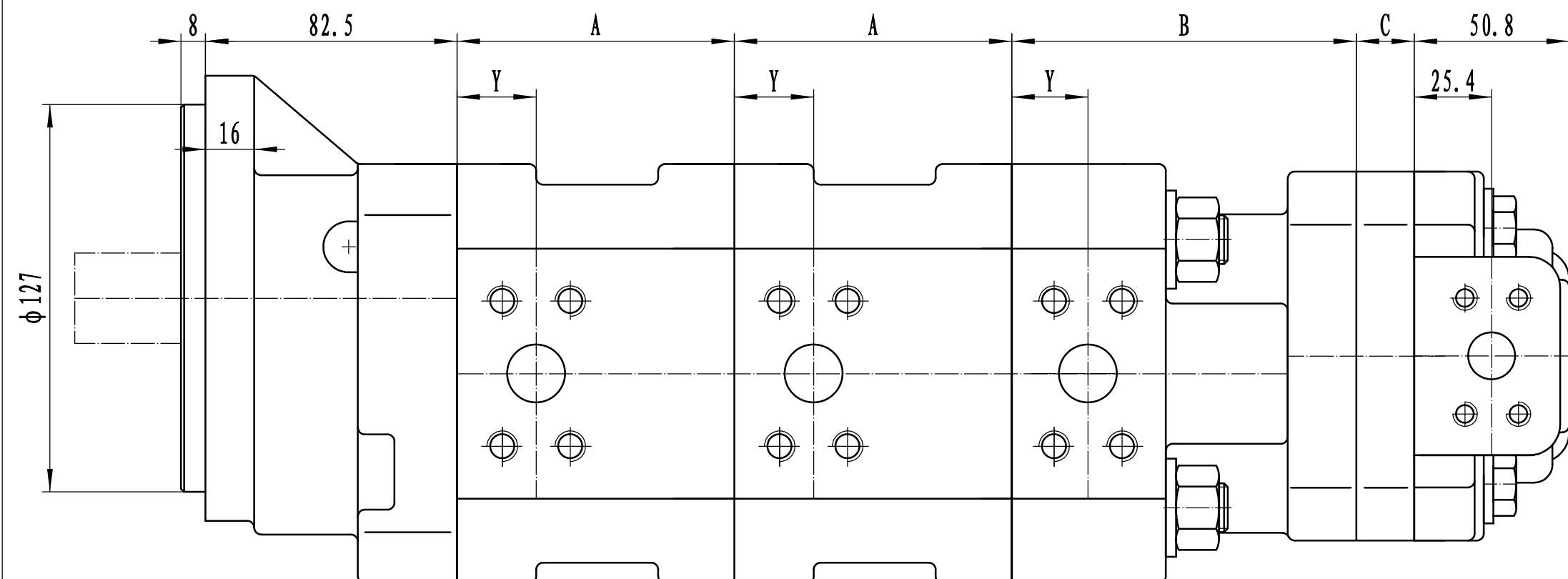
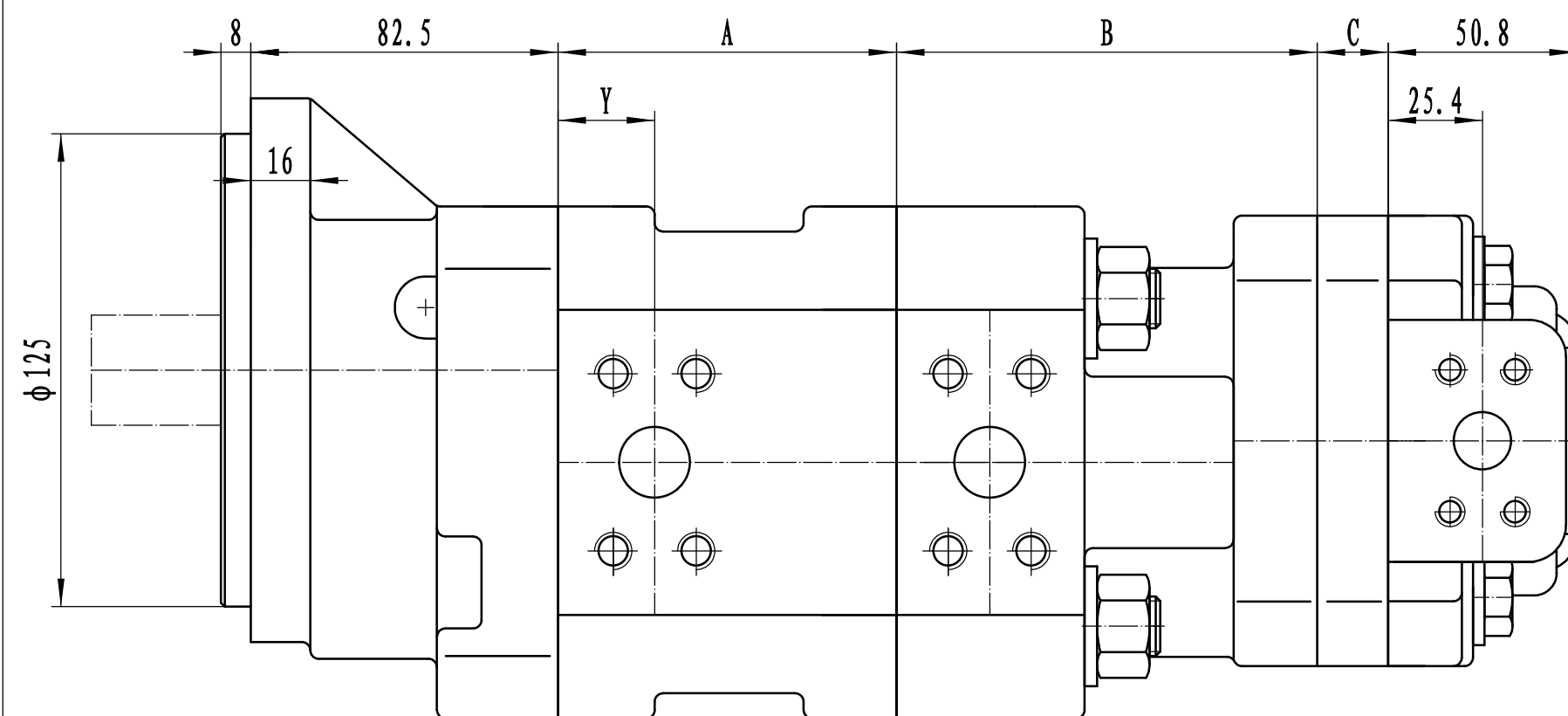


说明: 尺寸 "A、B" 见 "性能参数"

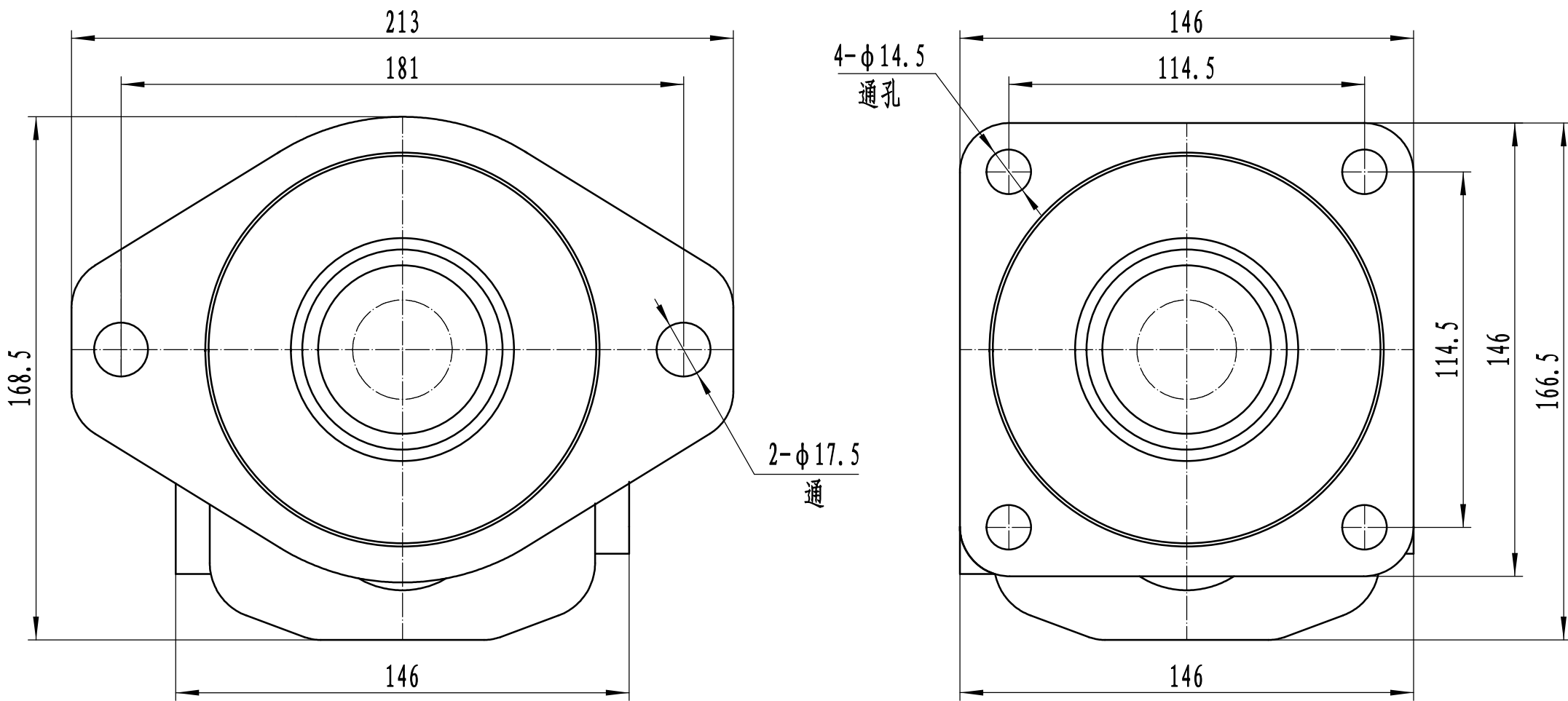
Note: Dimension "A、B" are covered in "performance"

尺寸 "Y" 请咨询派士乐研发中心

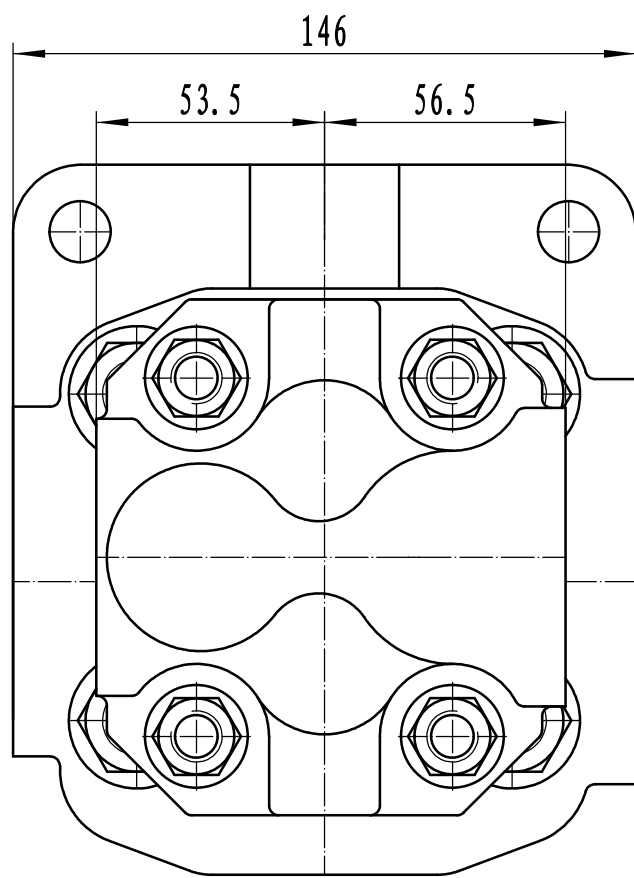
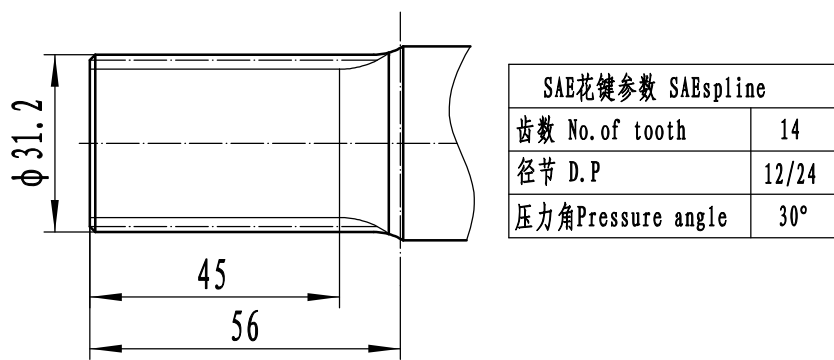
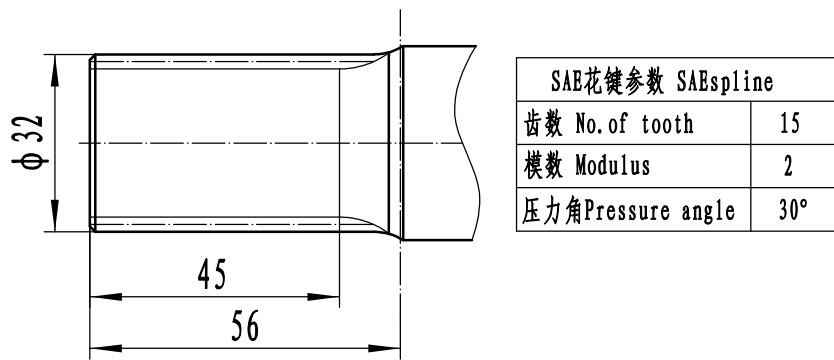
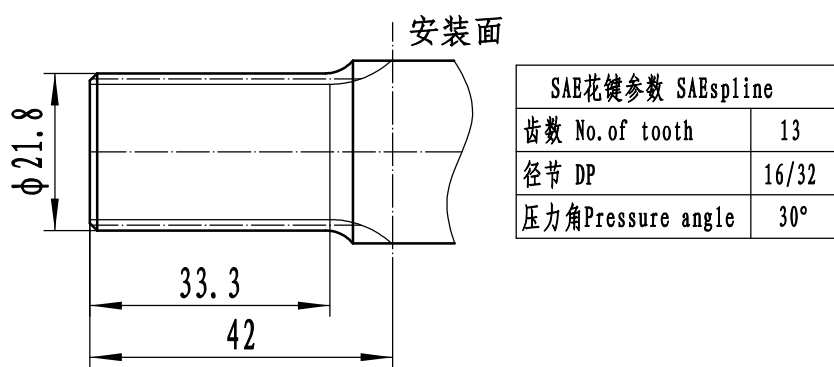
Dimension "Y", consult PARSLE R&D Dept.



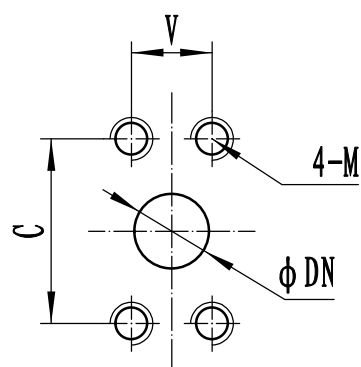
前盖型式 SHAFT END COVERS



轴伸型式 DRIVE SHAFTS



油口型式 PORT TYPES



公制法兰油口 Metric Split Flange Port			
DN	C	V	M
19.1	47.6	22.3	M10
25.4	52.4	26.2	深20
31.8	58.7	30.2	deep20
38.1	69.9	35.7	M12
50.8	77.8	42.9	深20 deep20