

# T3-P5 系列齿轮泵简介

*Introduction to T3-P5 Series Gear Pumps*

## 特点

- 采用T3系列和P5系列相互结合的组合形式
- 结构紧凑的重载轴套设计
- 优化的排量范围，可实现多排量组合
- 结构简单，重载设计，经济耐用
- 采用高强度铸铁两片式结构，使同轴度无误差。
- 可以组装成单联泵、双联泵、三联及四联泵结构
- 安装形式、油口、轴伸有多种设计可供选择
- 100% 出厂试验检测

## FEATURES

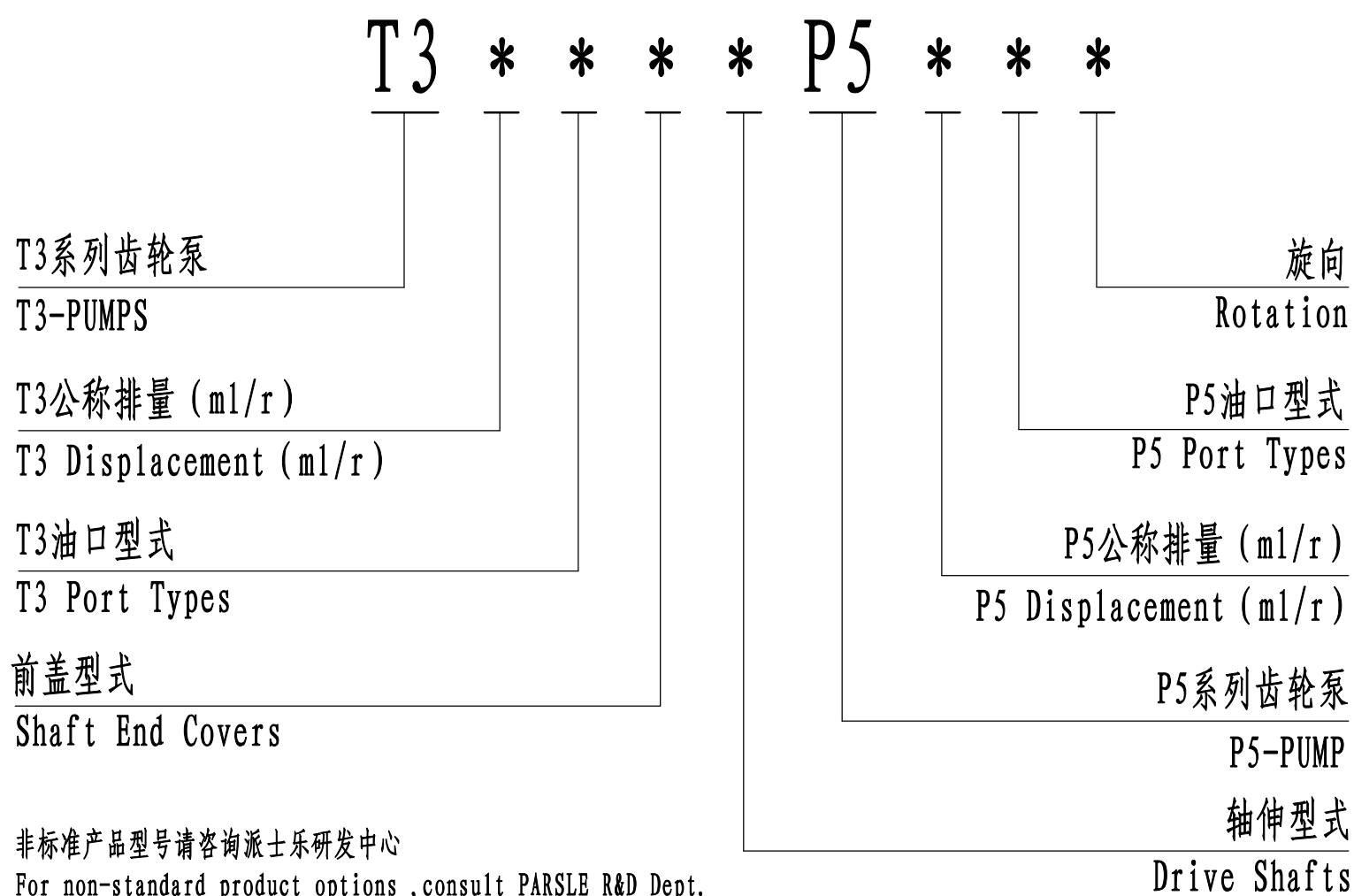
- The combination of the T3 series and the P5 series was adopted
- Heavy duty sleeve bushing design in a small frame size
- Optimization of the displacement range, and can realize the combined displacement
- Simple structure, heavy duty design, economic and durable
- Adopt high-strength cast iron two-piece structure, make coaxiality without error
- Can be assembled into a single pump, double and triple pump structure
- A wide range of porting, mounting and shaft options available
- 100% factory tested

### 使用领域 APPLICATION FIELD

该产品设计构造适用于：钻探机械、路面机械、凿岩机械等领域

The product design structure is suitable for: drilling machinery, road machinery, rock drilling machinery and other fields

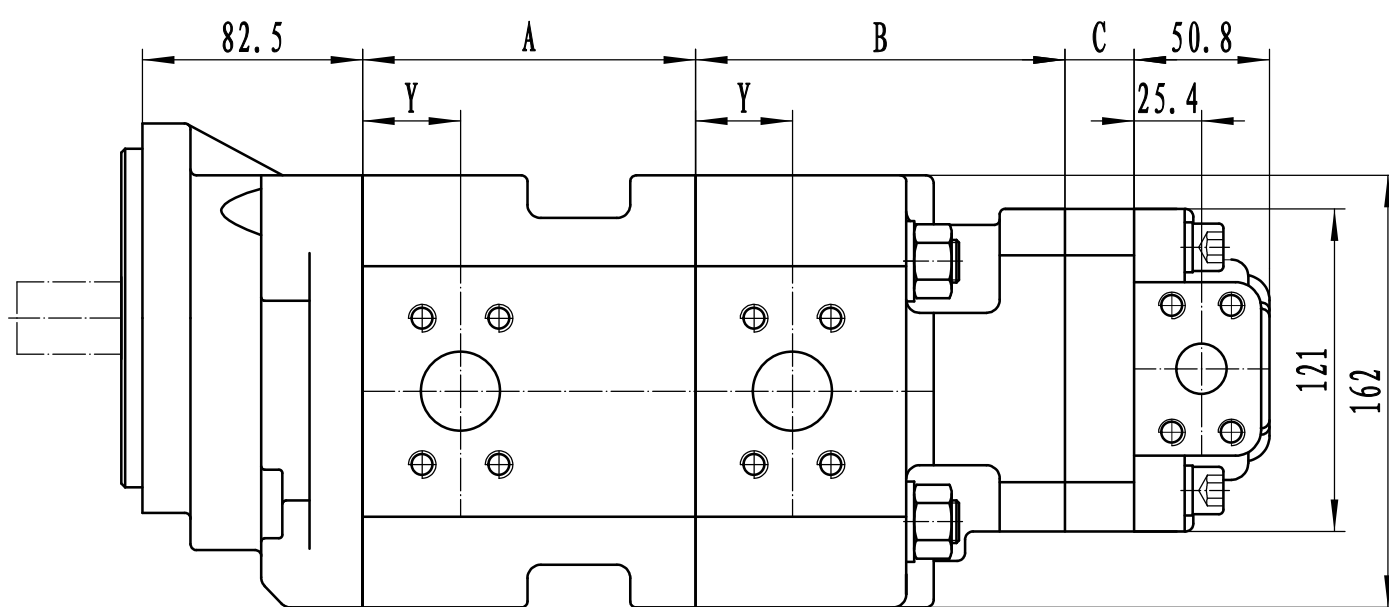
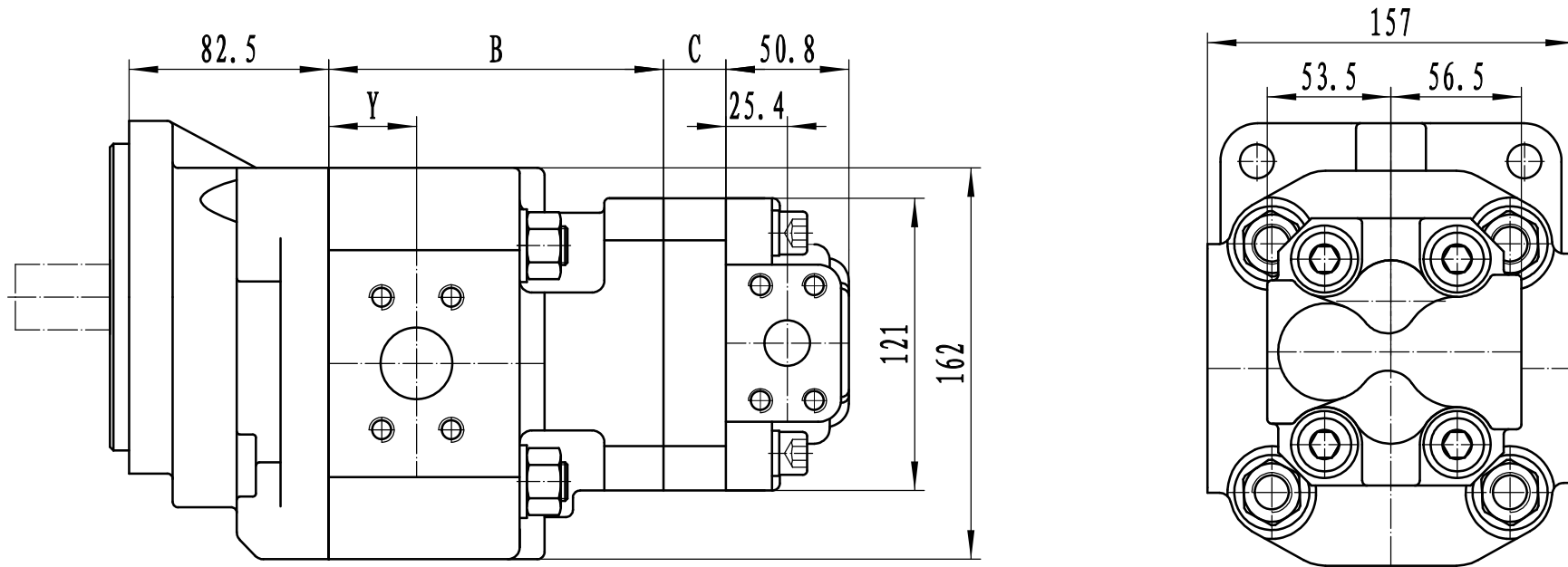
### 标准型号说明 STANDARD MODEL IDENTIFICATION



### 性能参数 PERFORMANCE

型号 Model	理论排量 displacement (ml/r)	额定压力 Rated Pressure (MPa)	最高压力 Max. Pressure (MPa)	A (mm)	B (mm)	型号 Model	理论排量 displacement (ml/r)	额定压力 Rated Pressure (MPa)	最高压力 Max. Pressure (MPa)	最高转速 Max. Speed (r/min)	最低转速 Min. Speed (r/min)	C (mm)
T325	24.99	25	28	105.7	110.5	P505	5.1	25	28	2500	600	16.4
T332	33.0			109.9	123.5	P508	8.2					19.6
T340	43.74			115.3	129.0	P510	10.16					22.7
T350	49.98			118.4	132.5	P512	12.5					25.9
T363	62.48			124.8	138.5	P516	15.23					29.0
T375	74.98			131.1	145.0	P520	20.31					35.4
T380	81.22			134.3	148.0	P525	25.39					41.8
T390	93.72			140.7	154.5	P530	30.47					48.1
T3100	99.97			143.8	158.0	P535	35.54					54.5

外形尺寸 Outline Dimensions

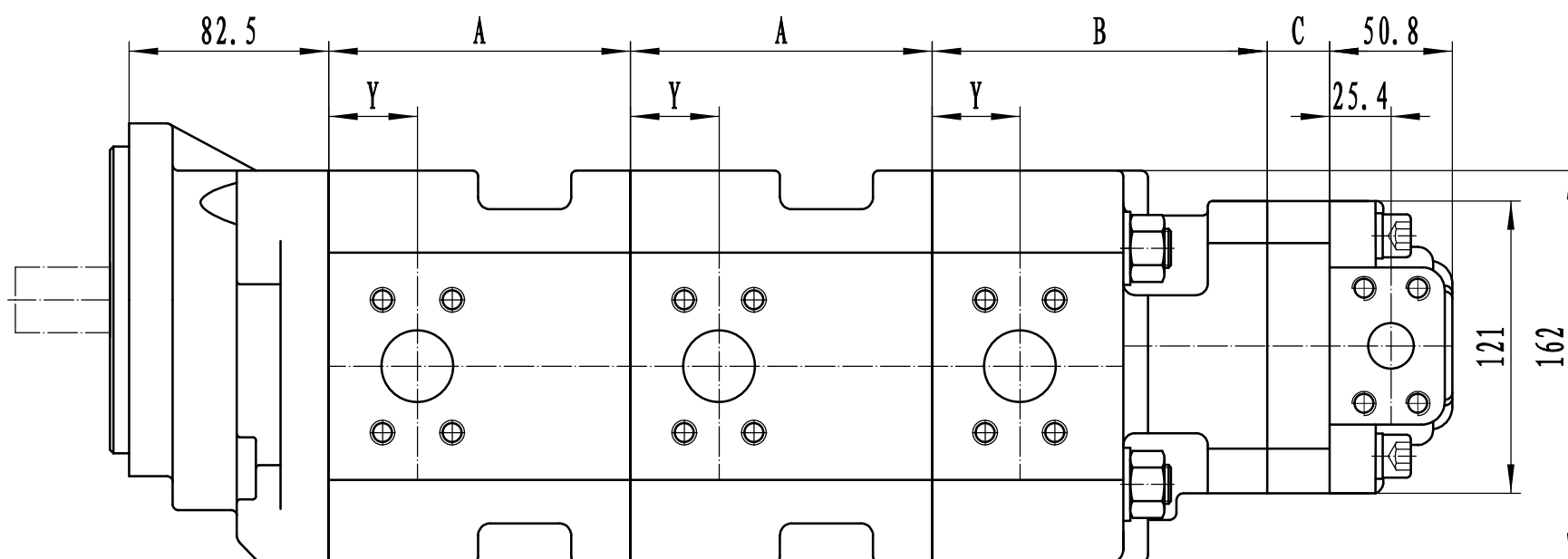
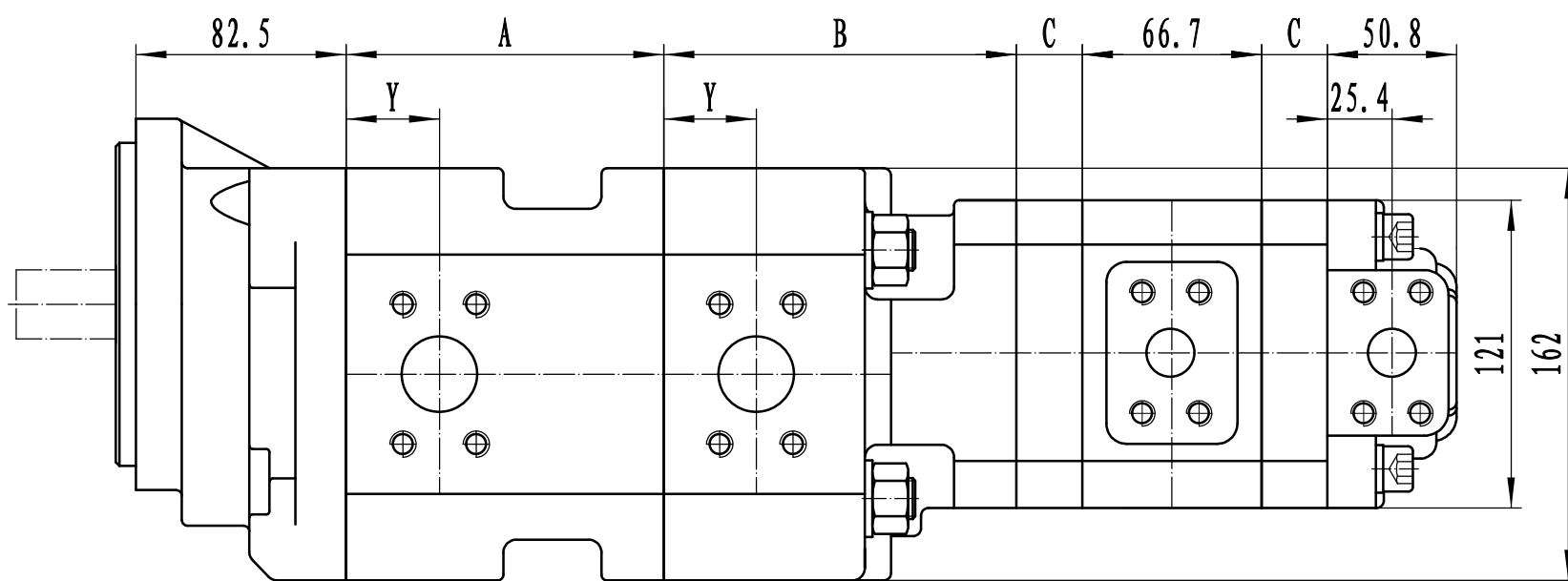


说明: 尺寸 "A、B、C" 见 "性能参数"

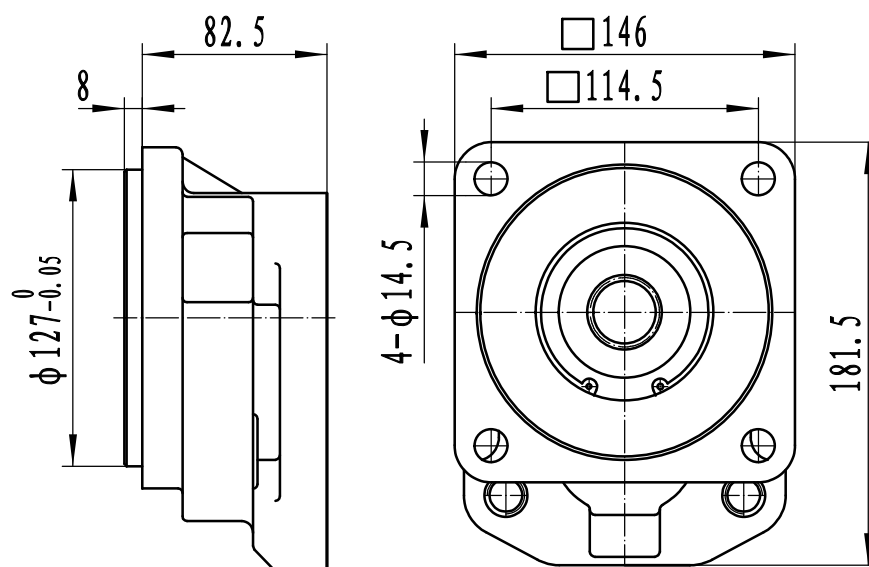
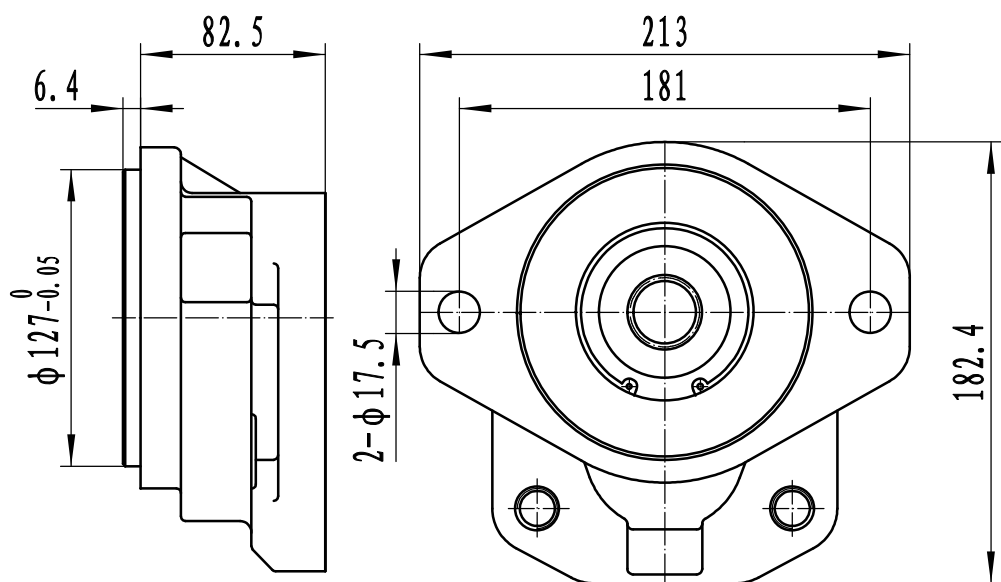
Note: Dimension "A、B、C" are covered in "performance"

尺寸 "Y" 请咨询研发中心

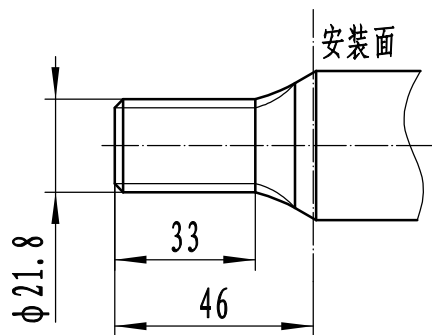
Dimension "Y", consult TJ R&D Dept.



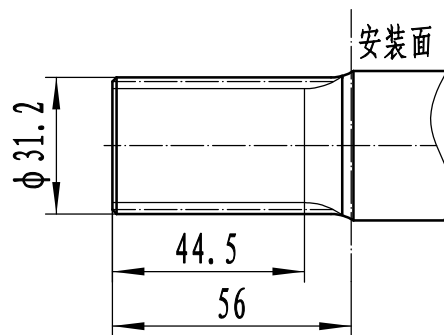
前盖型式 SHAFT END COVERS



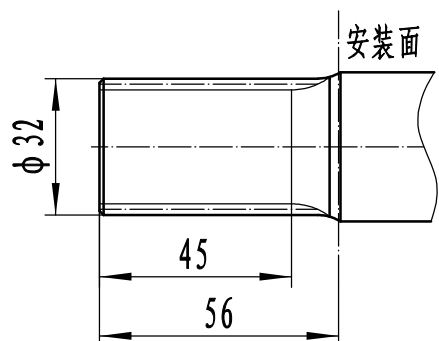
轴伸型式 DRIVE SHAFTS



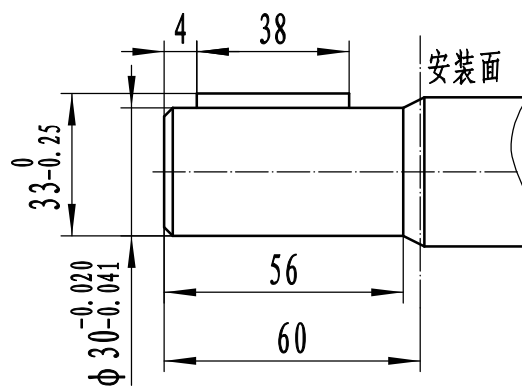
SAE花键参数 SAEsplines	
齿数 No. of tooth	13
径节 D.P	16/32
压力角 Pressure angle	30°



SAE花键参数 SAEsplines	
齿数 No. of tooth	14
径节 D.P	12/24
压力角 Pressure angle	30°

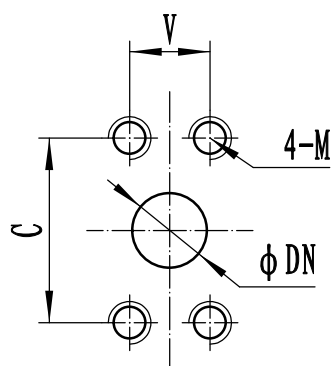


SAE花键参数 SAEsplines	
齿数 No. of tooth	15
模数 Modulus	2
压力角 Pressure angle	30°

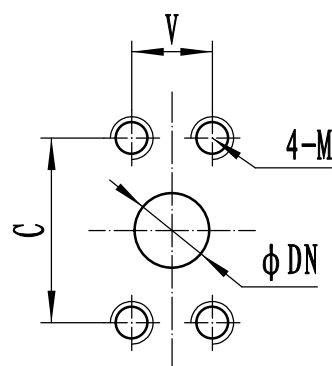


平键 GB/T1096-79  
键: 8 (W) X7 (H) X38 (L)  
KEY GB/T1096-79  
8 (W) X7 (H) X38 (L)

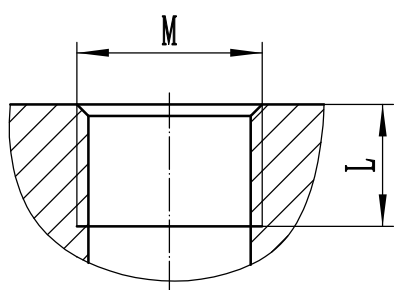
油口型式 PORT TYPES



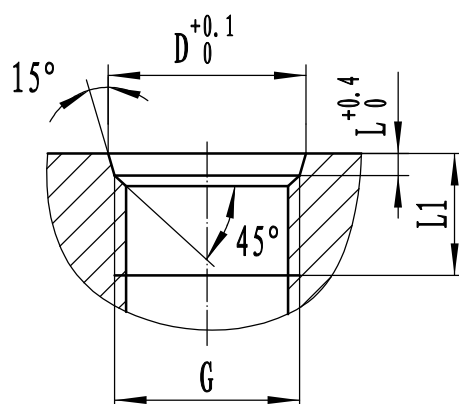
P7公制法兰油口 P7 Metric Split Flange Port			
DN	C	V	M
19.1	47.6	22.3	M10
25.4	52.4	26.2	深20
31.8	58.7	30.2	deep20
38.1	69.9	35.7	M12
50.8	77.8	42.9	深20 deep20



P5公制法兰油口 P5 Metric Split Flange Port			
DN	C	V	M
19.1	47.6	22.3	M10
25.4	52.4	26.2	深15
31.8	58.7	30.2	deep15



P5公制螺纹油口 P5 Metric Straight thread	
M	L
M22X1.5	16
M27X2	19
M33X2	19



P5管螺纹油口 P5 BSPP PORT			
G	D	L	L1
G1	35.8	3.5	21
G1/2	30.46	3.92	17
G3/4	22.6	2.5	16