

GM5系列齿轮马达简介

Introduction to GM5 Series Gear Motors



特点

- 本系列高压齿轮泵采用铝合金结构，具有体积小，重量轻，压力高等特点
- 排量从5至25ml/r
- 安装形式、油口、轴伸有多种设计可供选择
- 整个工作过程中，压力平衡耐磨侧板可使泵始终保持高效率输出
- 100% 出厂试验检测

FEATURES

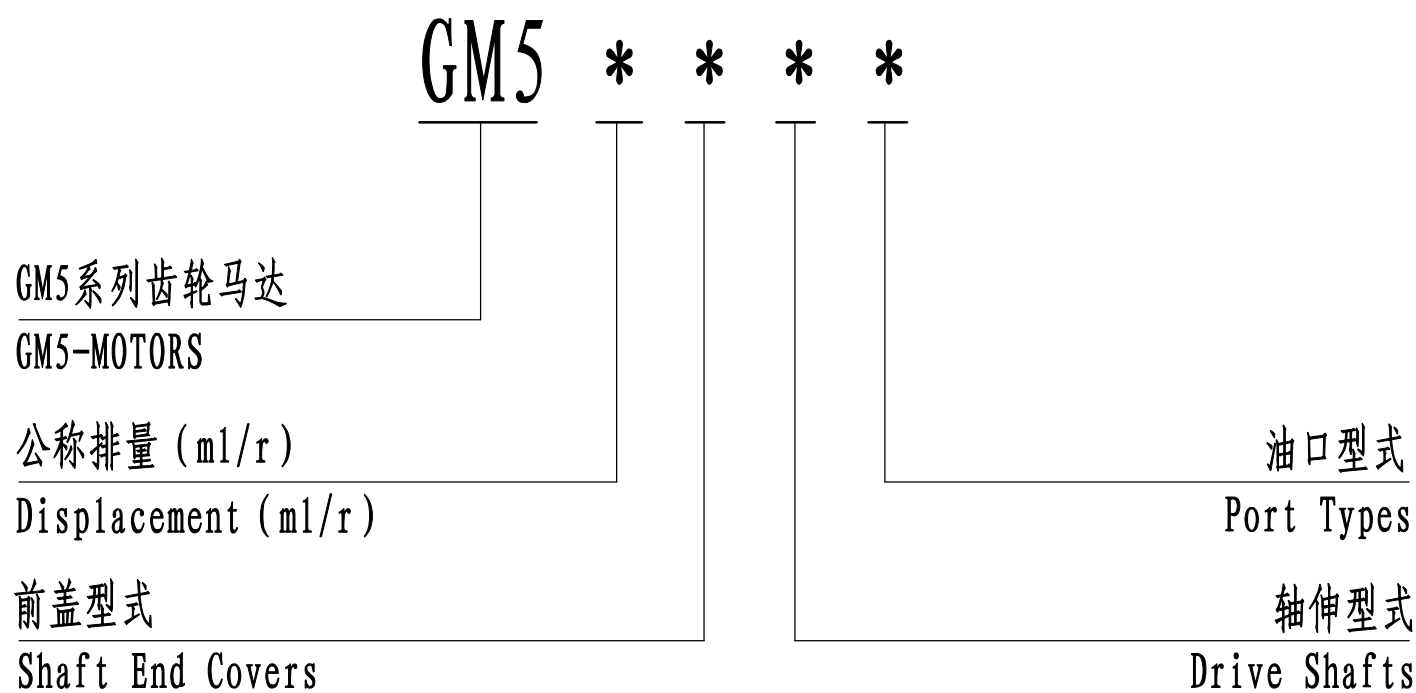
- This series of high-pressure gear pump adopts aluminum alloy structure, with small volume, light weight, high pressure and other characteristics
- Cubic inch displacement from 0.305 through 1.525
- A wide range of porting ,mounting and shaft options available
- Pressure balanced wear plates maintain high pump efficiency throughout all operating ranges
- 100% factory tested

使用领域 APPLICATION FIELD

该产品设计构造适用于：环卫车辆、工程起重机械、铲土运输机械、桩工机械、矿山机械、钻探机械、压实机械等领域

Applicable to: sanitation vehicles, engineering lifting machinery, shovel transport machinery, piling machinery, mining machinery, drilling machinery, compaction machinery and other fields

标准型号说明 STANDARD MODEL IDENTIFICATION

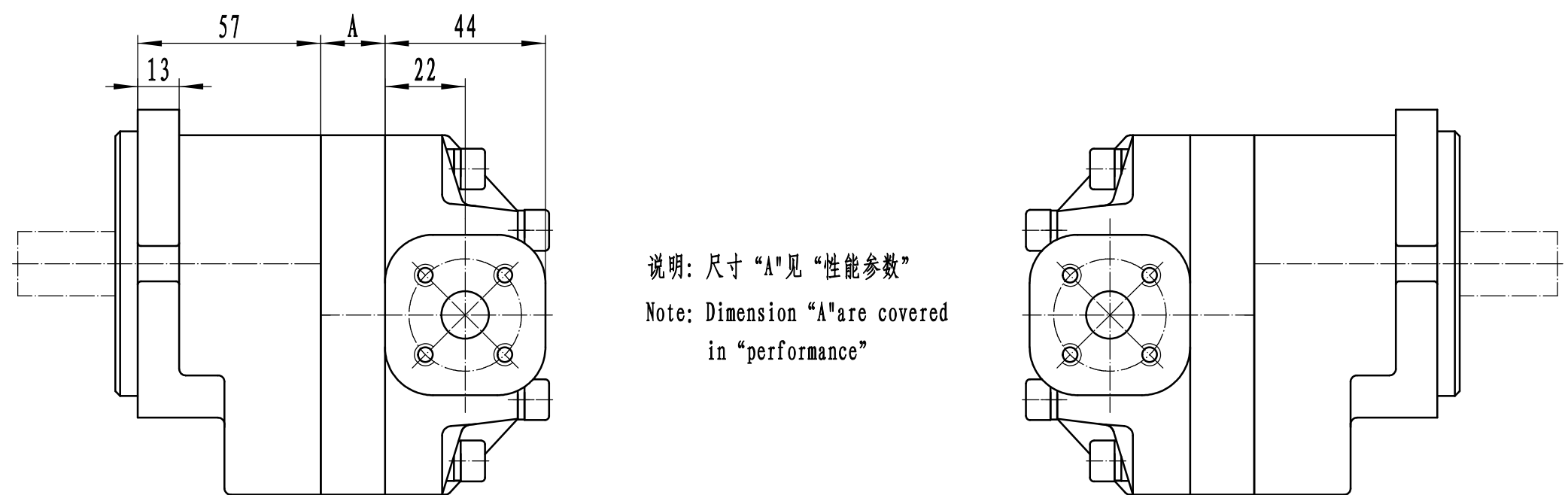
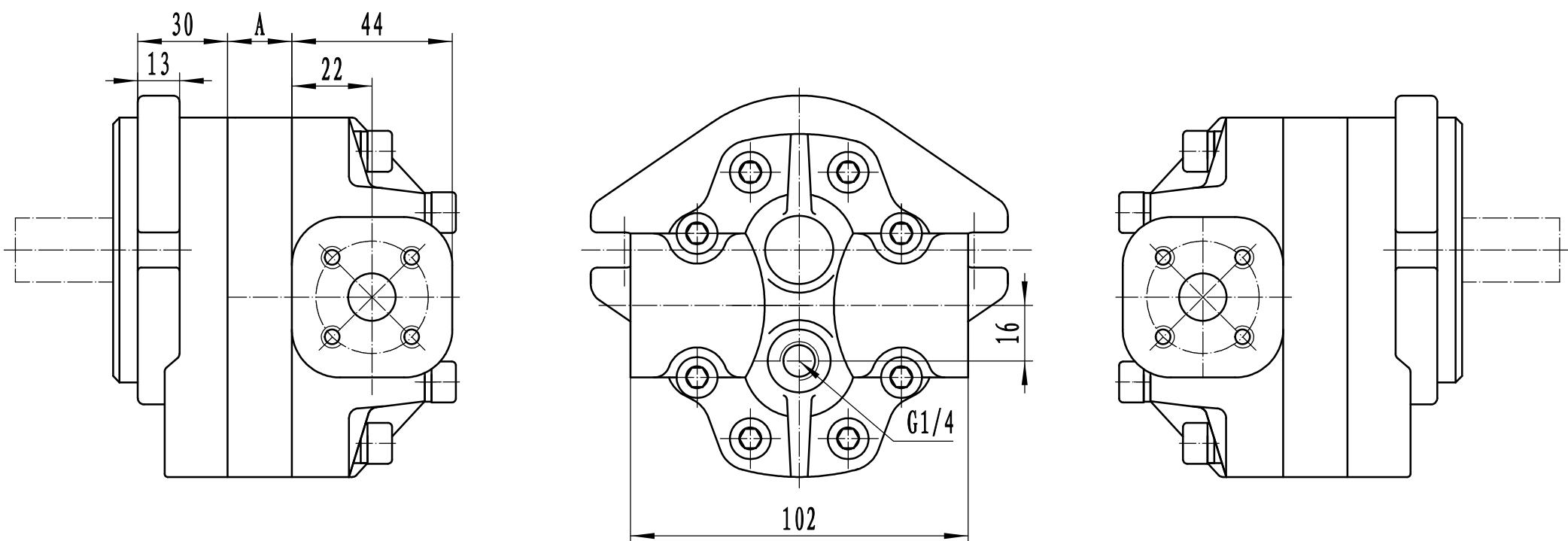


非标准产品型号请咨询派士乐研发中心
For non-standard product options ,consult PARSLE R&D Dept.

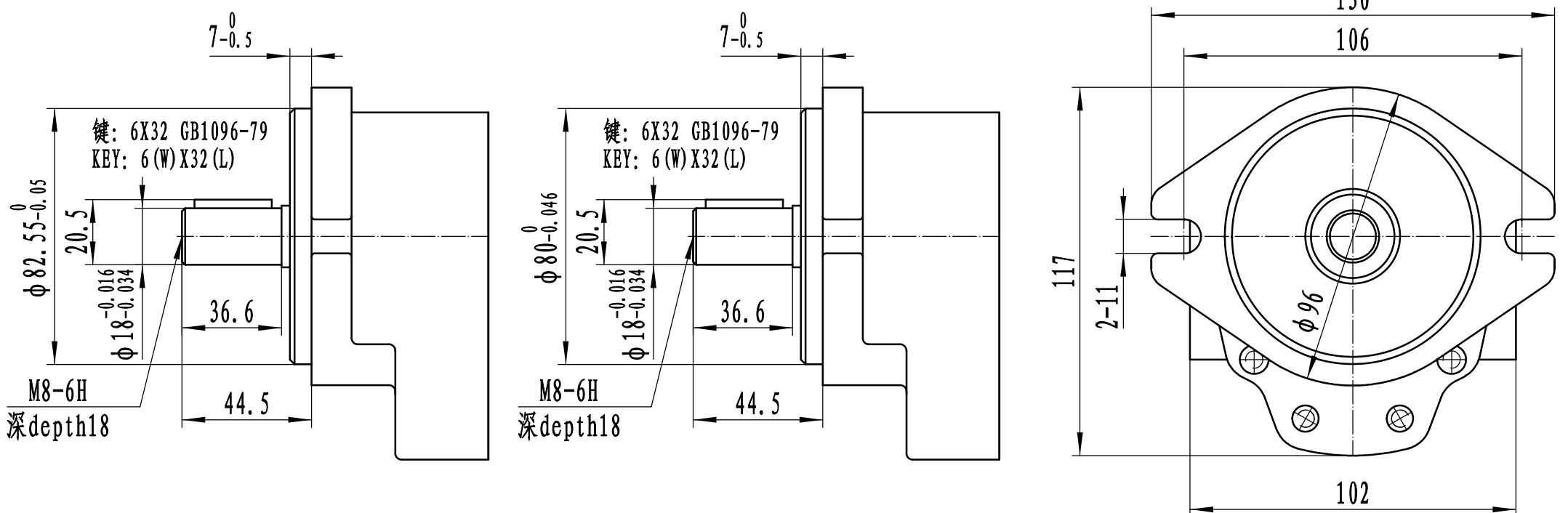
性能参数 PERFORMANCE

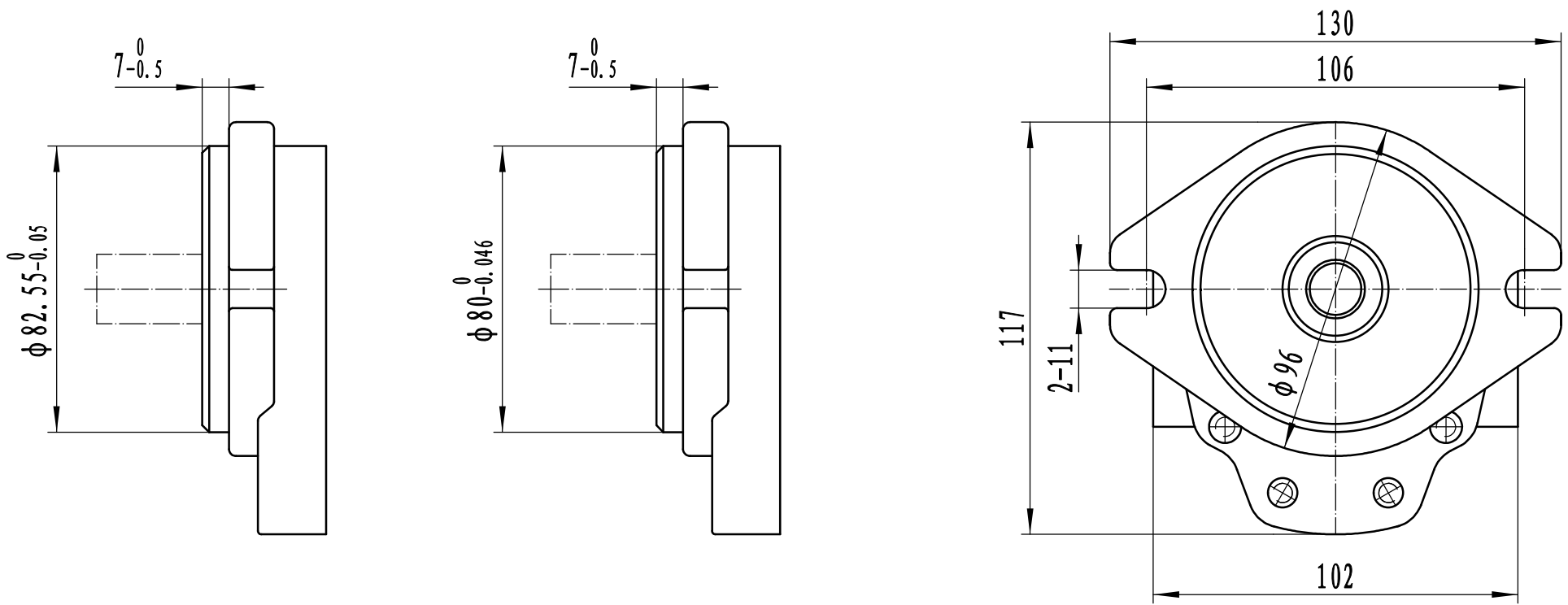
型号 Model	公称排量 Nominal displacement (ml/r)	额定压力 Rated Pressure (MPa)	最高压力 Max. Pressure (MPa)	最高转速 Max. Speed (r/min)	最低转速 Min. Speed (r/min)	A (mm)
GM5-05	5.2	20	25	3500	800	8.0
GM5-06	6.4				700	10.0
GM5-08	8.1				600	12.5
GM5-10	10.0					15.5
GM5-12	12.6					19.5
GM5-16	15.9				500	24.5
GM5-20	19.9	30.5				
GM5-25	25.0	38.5				
		16	21			

外形尺寸 Outline Dimensions

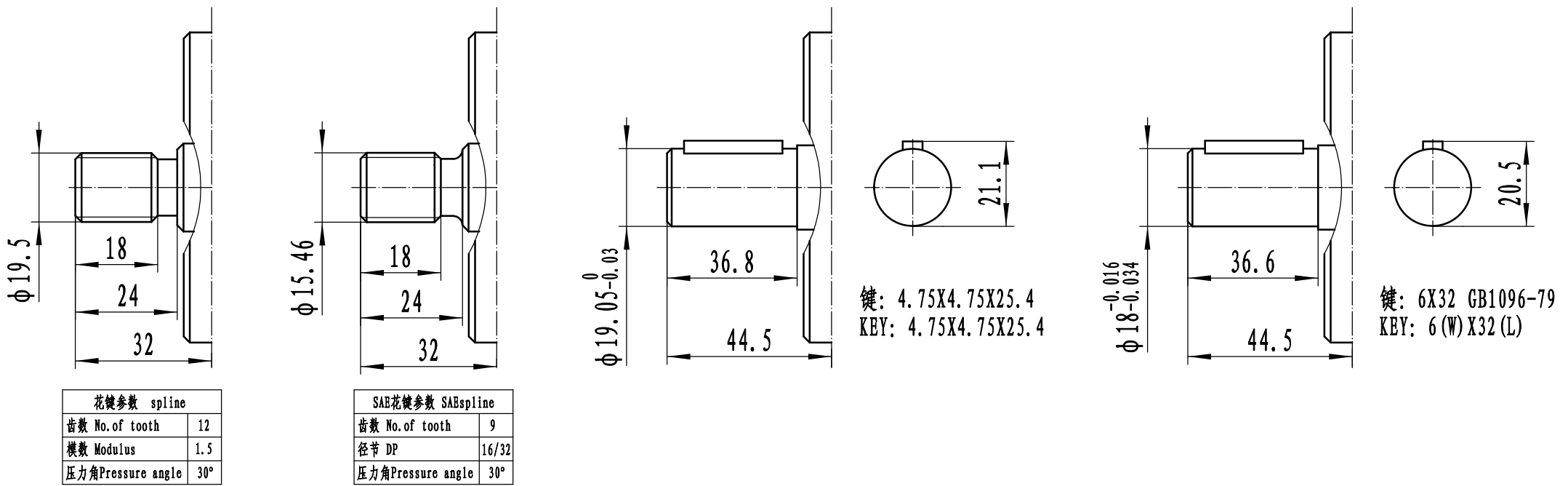


前盖型式 SHAFT END COVERS





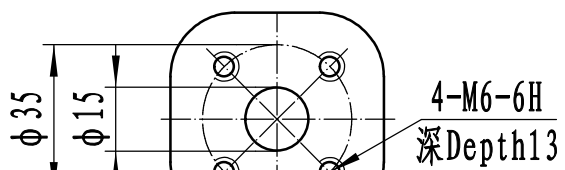
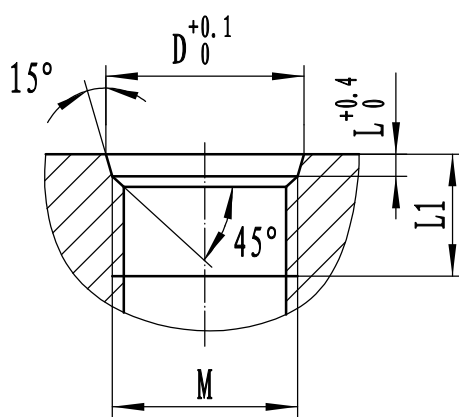
轴伸型式 DRIVE SHAFTS



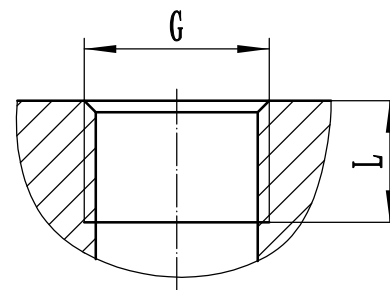
花键参数 spline	
齿数 No. of tooth	12
模数 Modulus	1.5
压力角 Pressure angle	30°

SAE花键参数 SAEspline	
齿数 No. of tooth	9
径节 DP	16/32
压力角 Pressure angle	30°

油口型式 PORT TYPES



公制法兰油口
Metric split flange port



公制螺纹油口 Metric Straight thread			
M	D	L	L1
M22X1.5	23.8	2.4	16
M27X2	29.4	3.1	20

管螺纹油口 BSPP PORT	
G	L
G1/2	17
G3/4	19