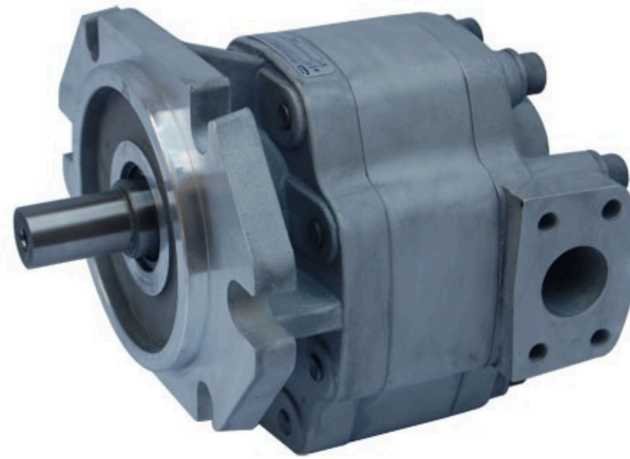


GMC4 系列齿轮马达简介

Introduction to GMC4 Series Gear Motors



特点

- 本系列高压齿轮泵采用铝合金结构，具有体积小，重量轻，压力高等特点
- 排量从16至80ml/r
- 安装形式、油口、轴伸有多种设计可供选择
- 整个工作过程中，压力平衡耐磨侧板可使泵始终保持高效率输出
- 100% 出厂试验检测

FEATURES

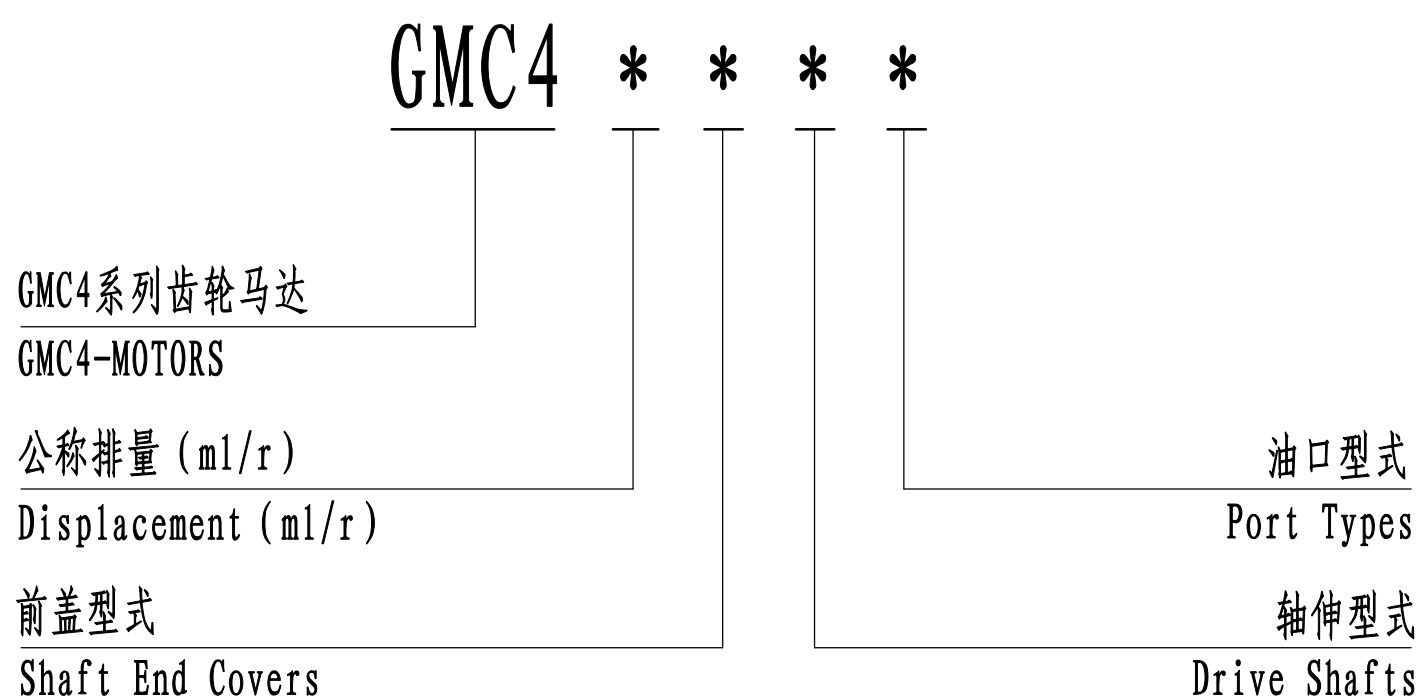
- This series of high-pressure gear pump adopts aluminum alloy structure, with small volume, light weight, high pressure and other characteristics
- Cubic inch displacement from 0.976 through 4.88
- A wide range of porting ,mounting and shaft options available
- Pressure balanced wear plates maintain high pump efficiency throughout all operating ranges
- 100% factory tested

使用领域 APPLICATION FIELD

该产品设计构造适用于：专用汽车、混凝土机械、工程起重机械、矿山机械、钻探机械、压实机械、路面机械、凿岩机械等领域

Applicable to: special vehicles, concrete machinery, engineering lifting machinery, mining machinery, drilling machinery, compaction machinery, road machinery, rock drilling machinery and other fields

标准型号说明 STANDARD MODEL IDENTIFICATION

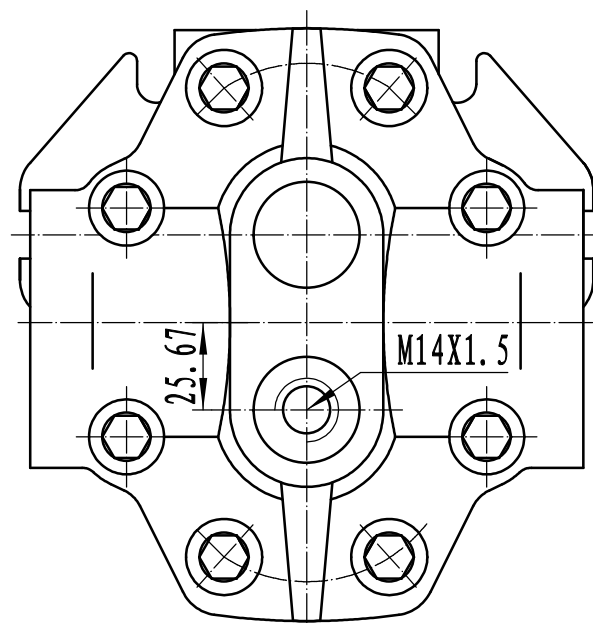
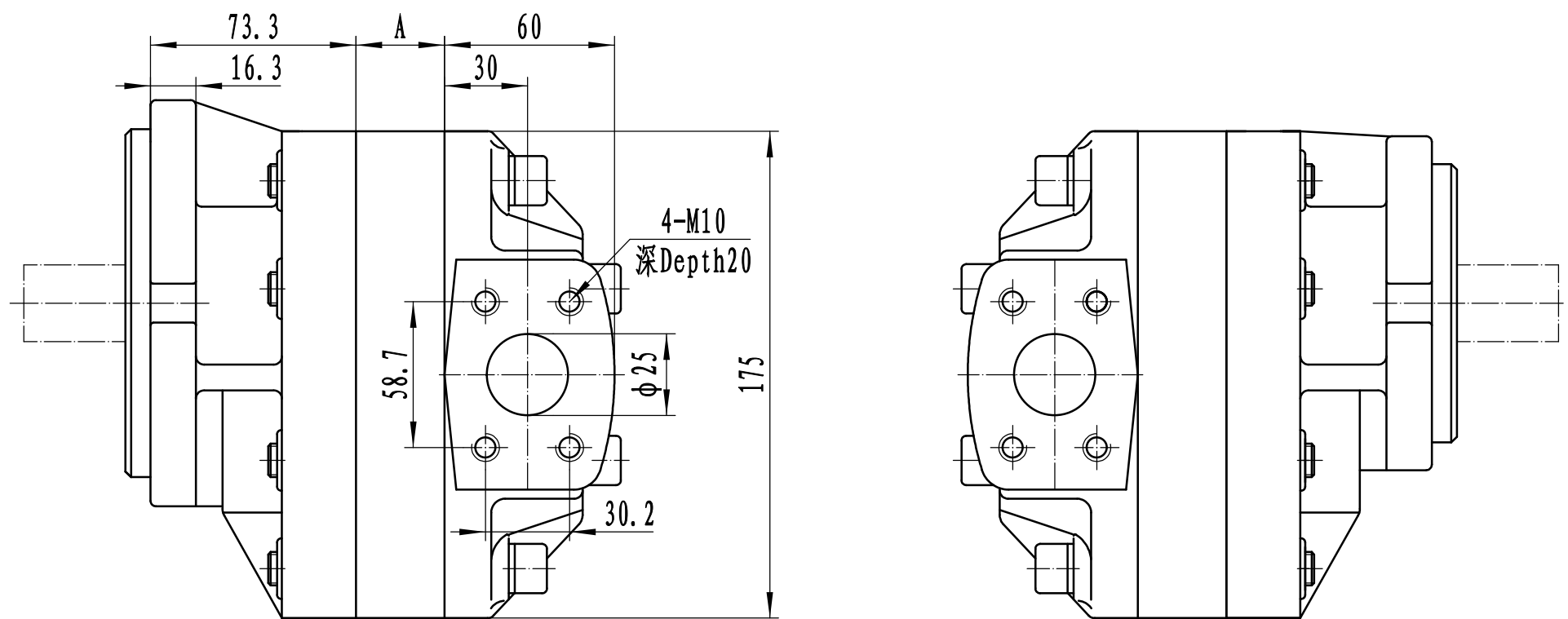


非标准产品型号请咨询派士乐研发中心
For non-standard product options ,consult PARSLE R&D Dept.

性能参数 PERFORMANCE

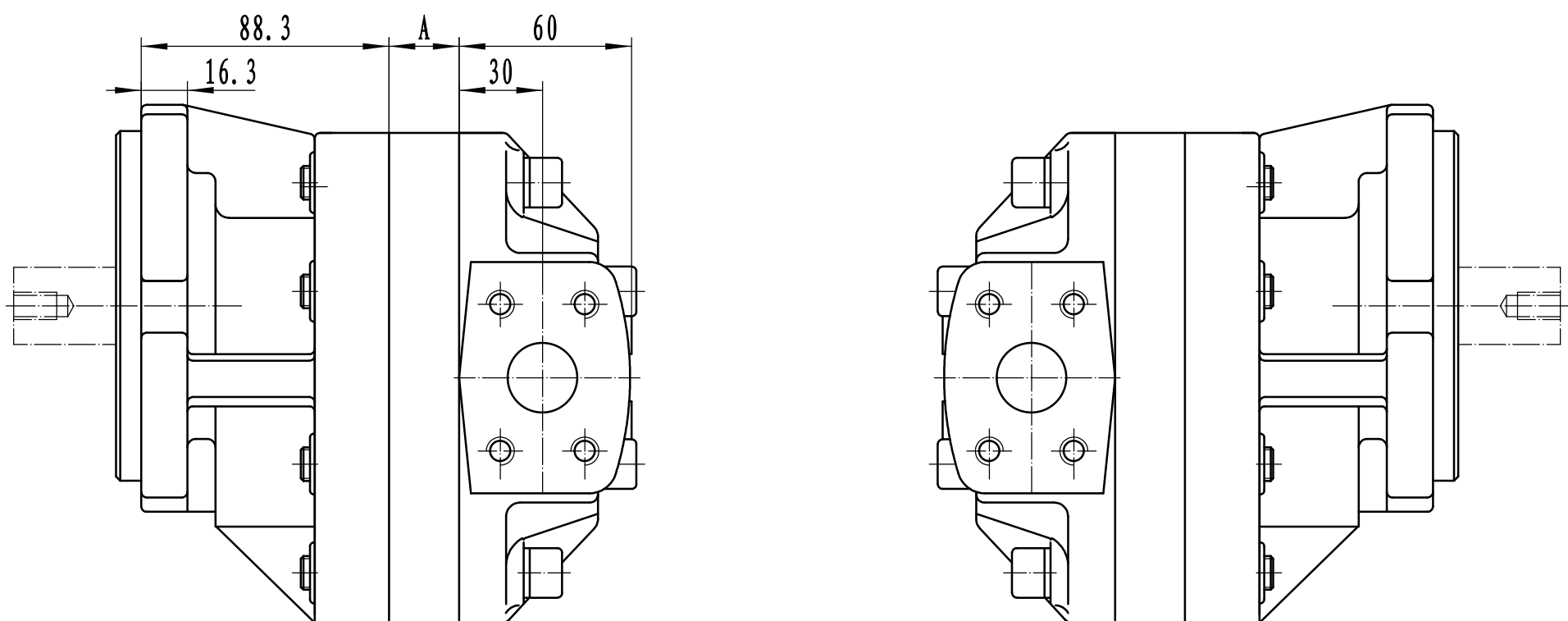
型号 Model	公称排量 Nominal displacement (ml/r)	额定压力 Rated Pressure (MPa)	最高压力 Max. Pressure (MPa)	最高转速 Max. Speed (r/min)	最低转速 Min. Speed (r/min)	A (mm)
GMC416	16.8	20	25	3000	900	14.0
GMC420	21.0					16.0
GMC425	26.2					20.0
GMC432	32.8					25.0
GMC440	42.0					32.0
GMC450	52.5					40.0
GMC463	65.6	50.0				
GMC480	78.7	18	23	2500	600	60.0

外形尺寸 Outline Dimensions

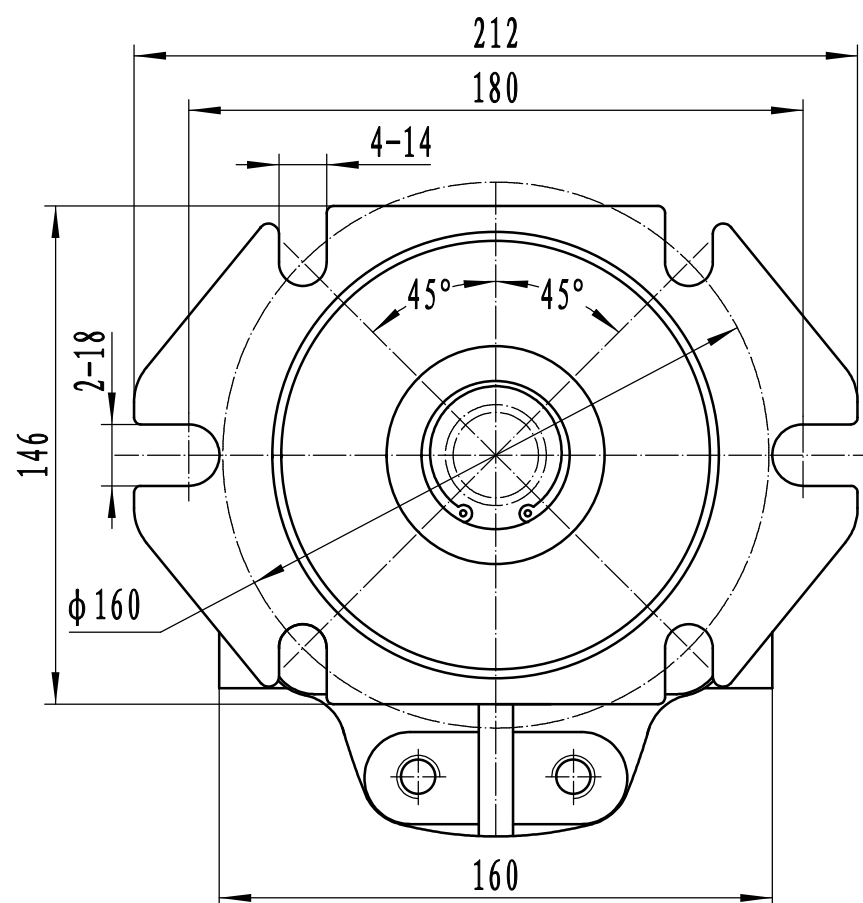
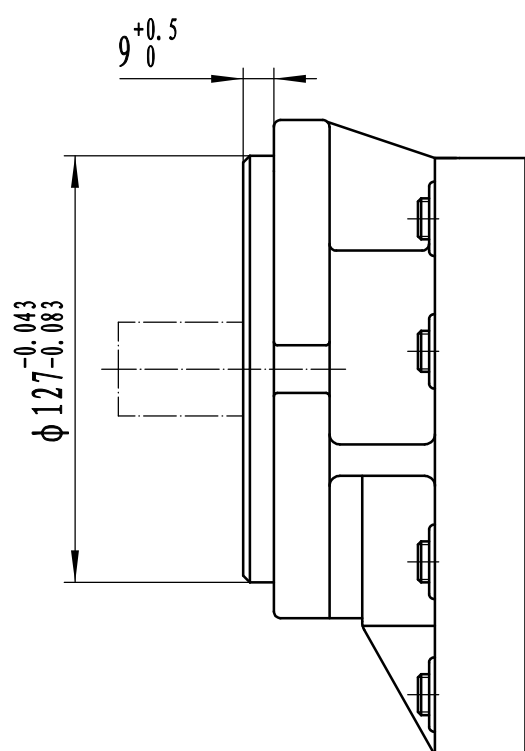
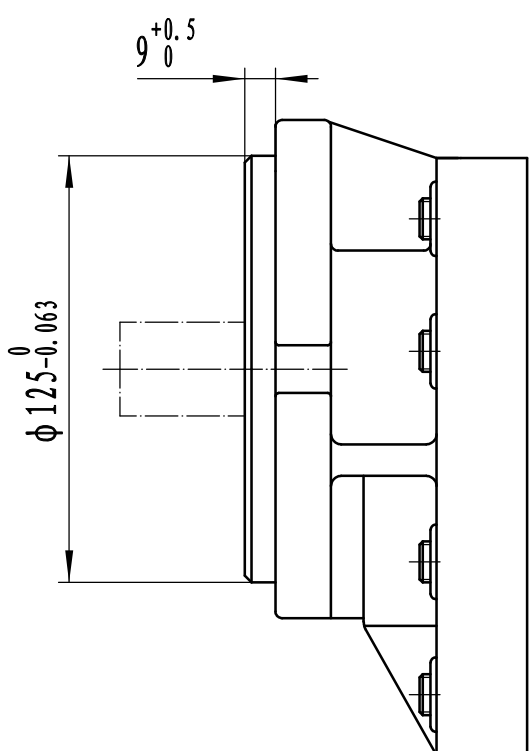
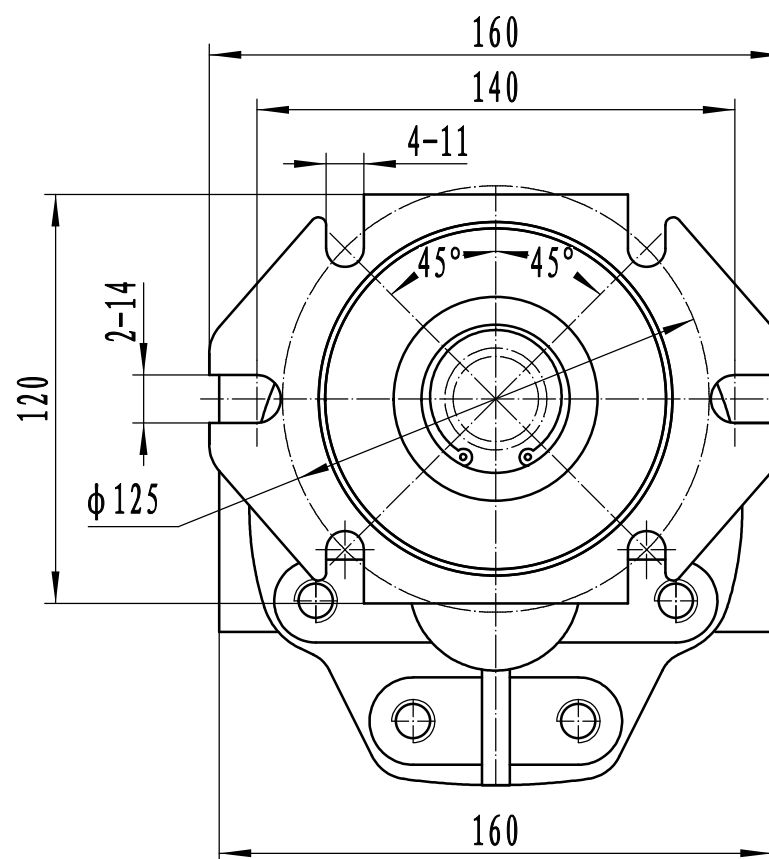
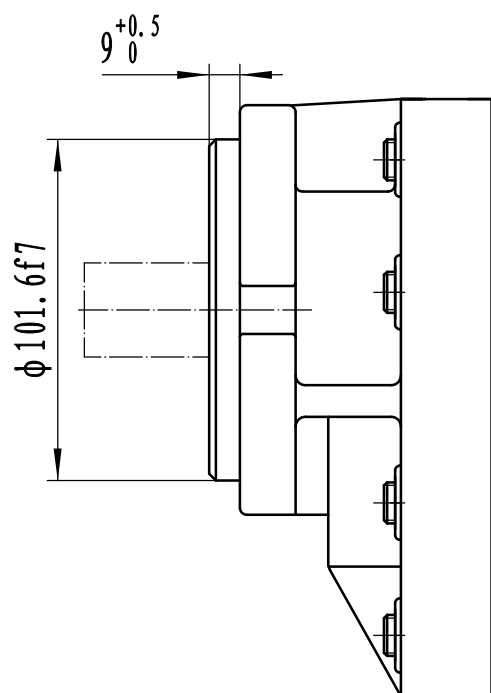
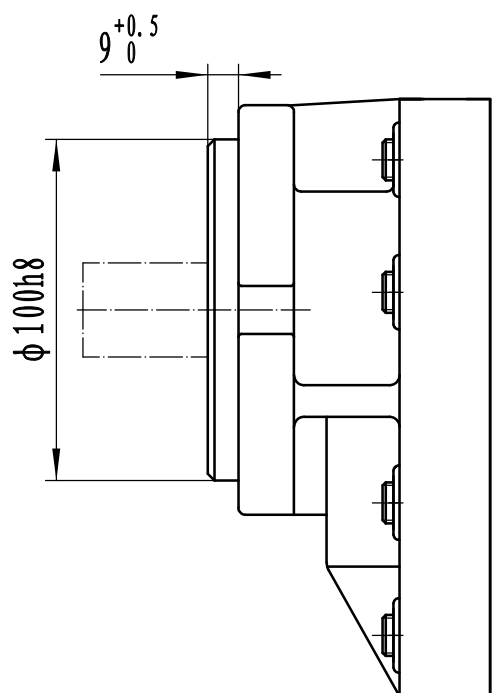


说明: 尺寸“A”见“性能参数”

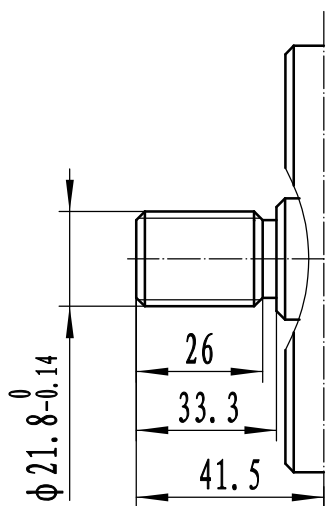
Note: Dimension “A” are covered in “performance”



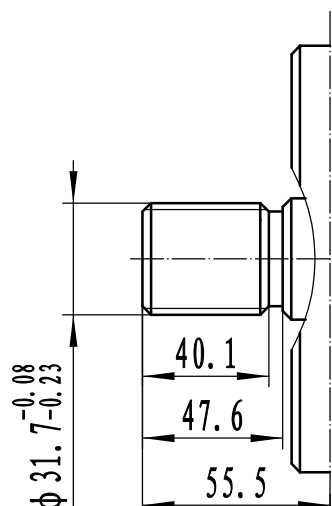
前盖型式 SHAFT END COVERS



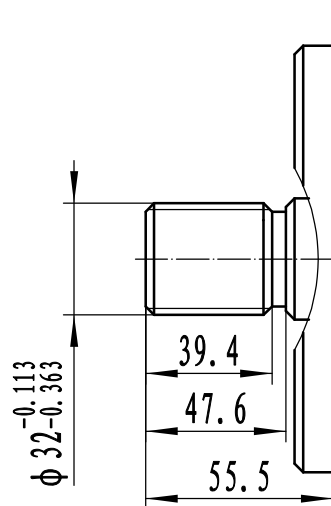
轴伸型式 DRIVE SHAFTS



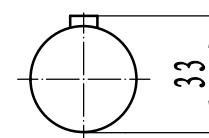
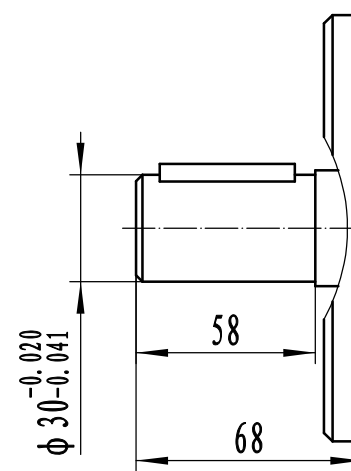
SAB花键参数	SABspline
齿数 No. of tooth	13
径节 DP	16/32
压力角 Pressure angle	30°



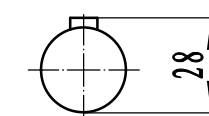
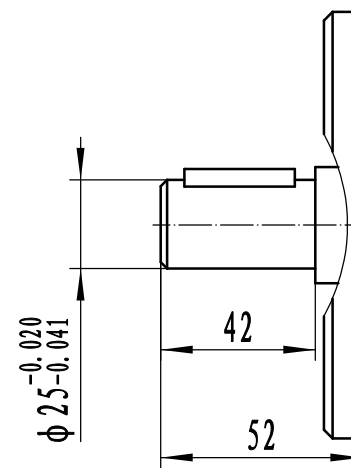
SAB花键参数	SABspline
齿数 No. of tooth	14
径节 DP	16/32
压力角 Pressure angle	30°



SAB花键参数	SABspline
齿数 No. of tooth	15
模数 Modulus	2
压力角 Pressure angle	30°



键: 8X50 GB1096-79
KEY: 8(W) X50(L)



键: 8X36 GB1096-79
KEY: 8(W) X36(L)