

TM3 系列齿轮马达简介

Introduction to TM3 Series Gear Motors

特点

- 结构紧凑的重载轴套设计
- 排量覆盖范围广，可实现多排量组合以满足客户的不同需求
- 结构简单，重载设计，经济耐用
- 采用高强度铸铁两片式结构，使同轴度无误差。
- 安装形式、油口、轴伸有多种设计可供选择
- 浮动侧板保证高效率的输出
- 100% 出厂试验检测

FEATURES

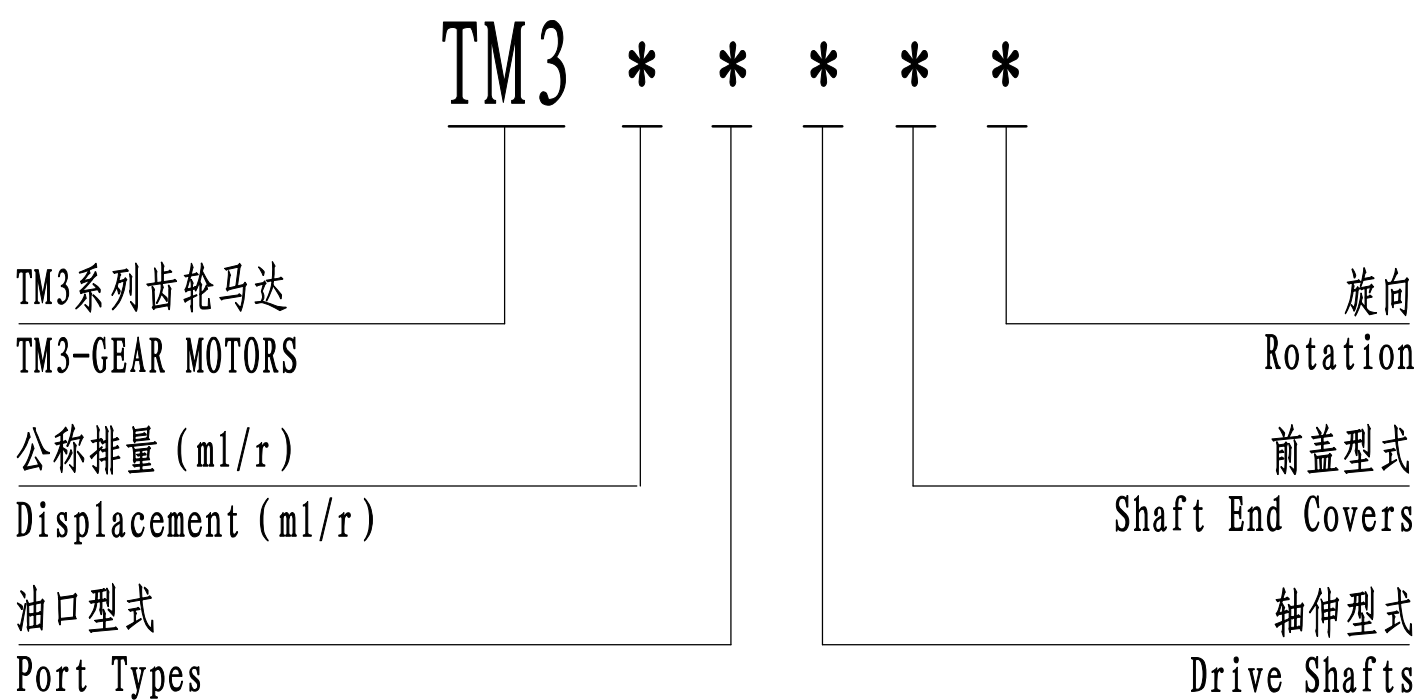
- Heavy duty sleeve bushing design in a small frame size
- Wide displacement scope can achieve displacement combination of different series to meet the different needs of customers
- Simple structure, heavy duty design , economic and durable
- Adopt high-strength cast iron two-piece structure, make coaxiality without error
- A wide range of porting , mounting and shaft options available
- Floating side panel ensures efficient output
- 100% factory tested

使用领域 APPLICATION FIELD

该产品设计构造适用于：液压冷却风扇、振动夯、泥浆泵动力、压路机等领域

The product design structure is suitable for: hydraulic cooling fan, vibration rammer, Mud Pump Power, roller and other fields

标准型号说明 STANDARD MODEL IDENTIFICATION

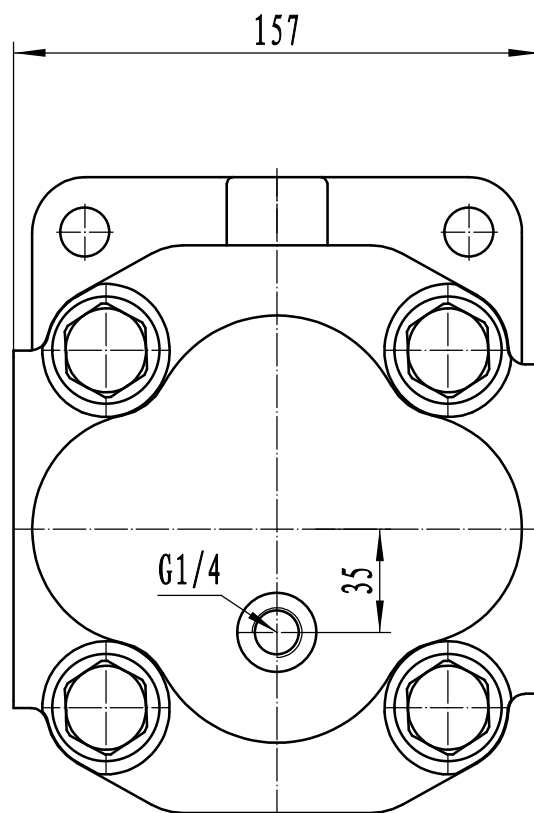
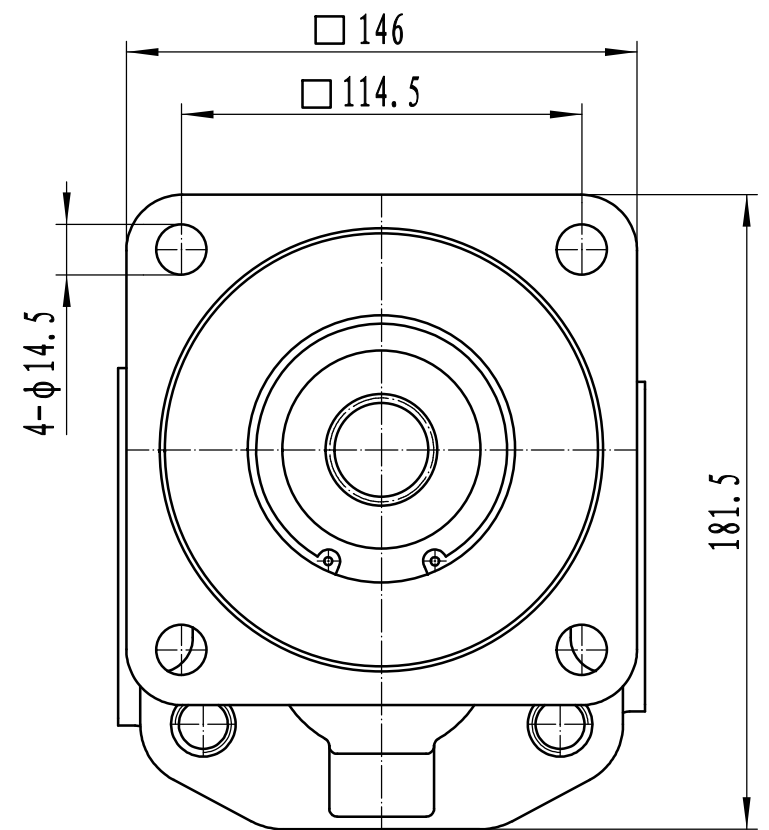
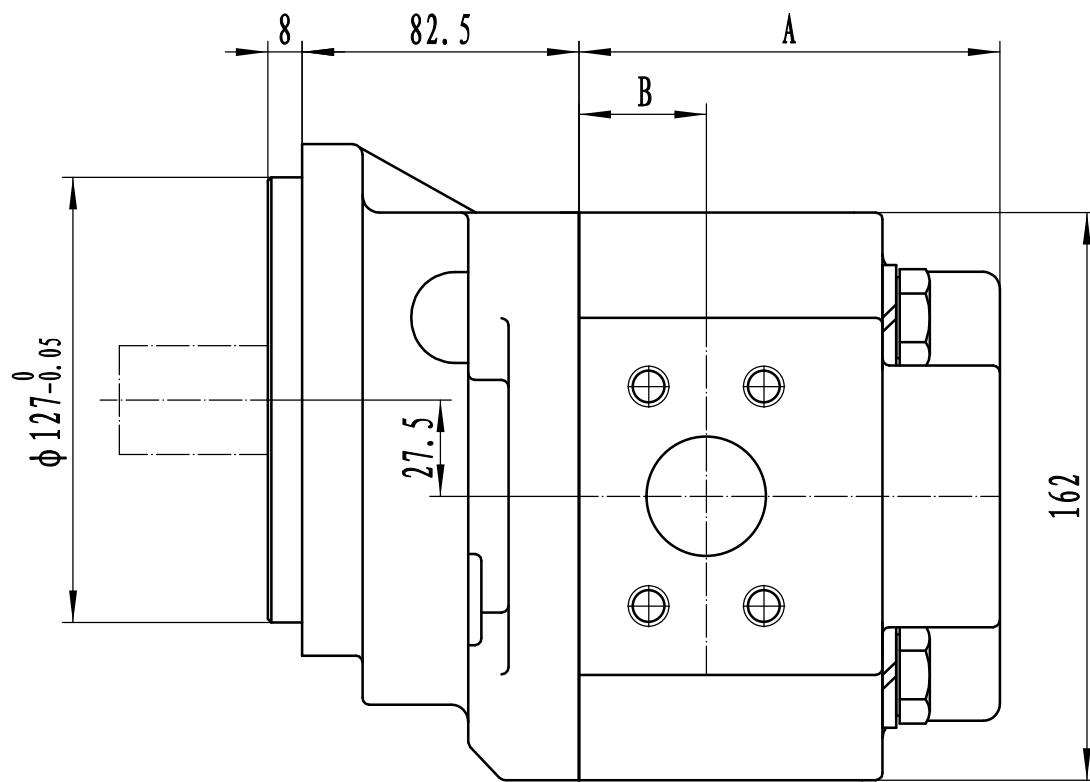


非标准产品型号请咨询派士乐研发中心
For non-standard product options ,consult PARSLE R&D Dept.

性能参数 PERFORMANCE

型号 Model	理论排量 displacement (ml/r)	额定压力 Rated Pressure (MPa)	最高压力 Max. Pressure (MPa)	最高转速 Max. Speed (r/min)	最低转速 Min. Speed (r/min)	A (mm)	B (mm)
TM325	24.99	25	30	2500	600	95.2	36.5
TM332	35.0					99.3	
TM340	43.74					104.8	
TM350	49.98					107.9	
TM363	62.48					114.3	
TM375	74.98					120.6	43.5
TM380	81.22					123.8	
TM390	93.72					130.2	
TM3100	99.97	133.3					

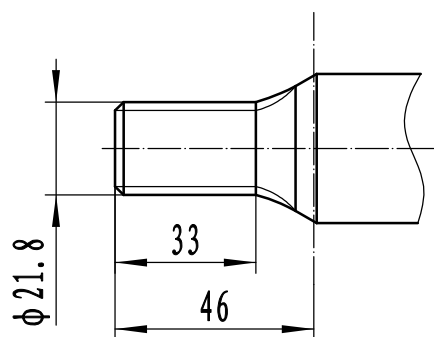
外形尺寸 Outline Dimensions



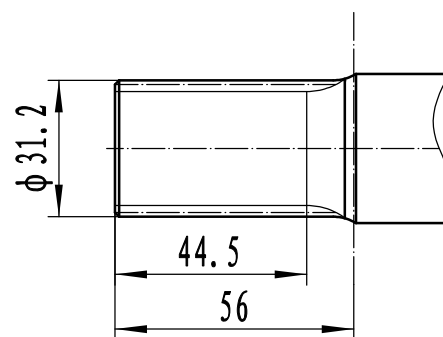
说明: 尺寸 "A" 见 "性能参数"

Note: Dimension "A" are covered in "performance"

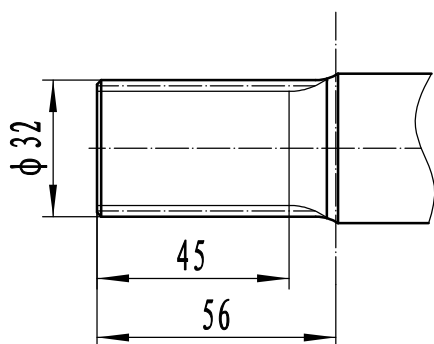
轴伸型式 DRIVE SHAFTS



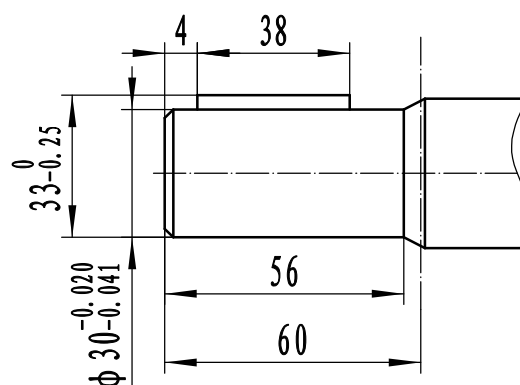
SAE花键参数 SAEsplines	
齿数 No. of tooth	13
径节 D.P	16/32
压力角 Pressure angle	30°



SAE花键参数 SAEsplines	
齿数 No. of tooth	14
径节 D.P	12/24
压力角 Pressure angle	30°

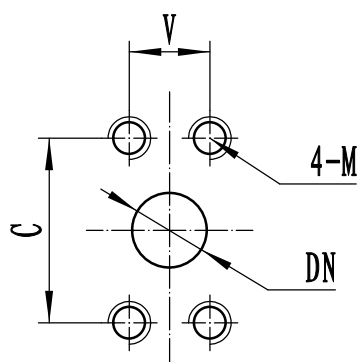


SAE花键参数 SAEsplines	
齿数 No. of tooth	15
模数 Modulus	2
压力角 Pressure angle	30°



平键 GB/T1096-79
 键: 8 (W) X7 (H) X38 (L)
 KEY GB/T1096-79
 8 (W) X7 (H) X38 (L)

油口型式 PORT TYPES



公制法兰油口 Metric Split Flange Port			
DN	C	V	M
19.1	47.6	22.3	M10
25.4	52.4	26.2	深20 deep20
31.8	58.7	30.2	
38.1	69.9	35.7	M12
50.8	77.8	42.9	深20 deep20